

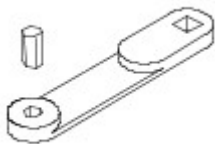
**AUTOMATIC TRANSMISSION/TRANSAXLE - V8 S/C 5.0L PETROL,
VEHICLES WITH: 8HP70 8-SPEED AUTOMATIC TRANSMISSION
RWD**

TRANSMISSION FLUID LEVEL CHECK [G1579978]

GENERAL PROCEDURES

44.24.06	TRANSMISSION FLUID LEVEL CHECK	ALL DERIVATIVES	0.50	USED WITHINS
-----------------	---	----------------------------	-------------	---------------------

SPECIAL TOOL(S)



307-45

307-452

Wrench, Transmission Filler Plug

CHECK



⚠ WARNINGS:

- Observe due care when draining, as the fluid can be very hot.
- Observe due care when working near a hot exhaust system.

⚠ CAUTION:

Make sure that the transmission fluid temperature is below 30 degrees before starting the fluid level check.

 **NOTE:**

Some variation in the illustrations may occur, but the essential information is always correct.

1.

- The following steps must be observed before starting the transmission fluid level check.
- The vehicle must be on a horizontal ramp.
- Make sure that the electric park brake (EPB) is applied.
- Make sure the transmission control switch (TCS) is in the Park (P) position.

2.

 **NOTE:**


Using Jaguar approved diagnostic equipment, make sure the transmission temperature is between 30°C (86°F) and 50°C (122°F) before starting the fluid level check..

- Connect Jaguar approved diagnostic equipment to the vehicle.
- Start the engine and allow to idle.
- Switch off the air conditioning (A/C) system and other electrical components.

3.

- Make sure that the transmission is not in the default mode, if this is the case, stop and correct the cause first and then restart the fluid level check.

4.

 **CAUTION:**

Make sure the hydraulic control system is filled with oil.

- Apply and hold the brake pedal.
- Select reverse gear and wait for 10 seconds.
- Select drive, then manual 1st gear and wait for 10 seconds.
- Select 2nd gear and wait for 10 seconds.
- Select Park (P) on the TCS.

5.

 **NOTE:**

Make sure the torque converter is completely filled with oil.

- Raise the engine speed to 2000 rpm and hold for 30 seconds. Then return to idle speed.

6.



NOTE:

After completing the preparation, proceed to the actual transmission fluid level check.

- If the transmission oil temperature is lower than 30°C (86°F). Allow the transmission to warm up above 30°C (86°F) with the engine idling in the P position, then proceed with the transmission fluid level check.
- If the transmission oil temperature is above 50°C (122°F), switch off the engine and allow the transmission to cool down, then restart the fluid level check.

7.



CAUTION:

Only continue with the fluid level check if the transmission temperature is between 30°C (86°C) 50° C (122°).

- Start the engine, if not already idling.
- Maintain the engine idle speed.

8.



WARNING:

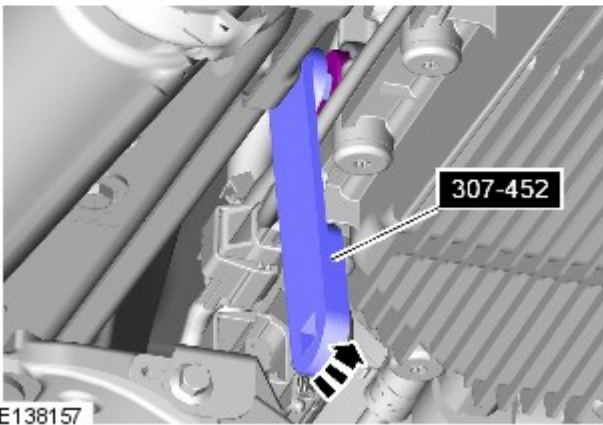
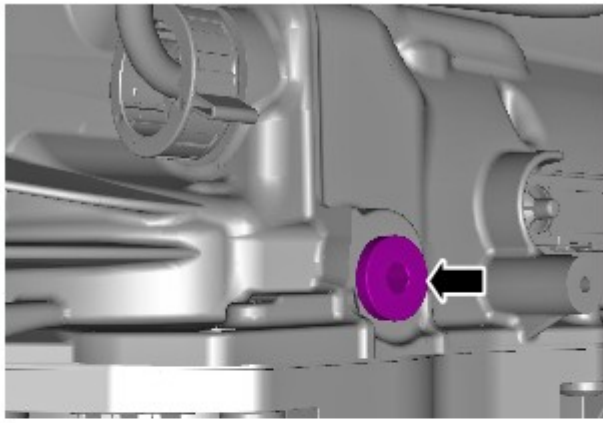
Make sure to support the vehicle with axle stands.

Raise and support the vehicle.

9.

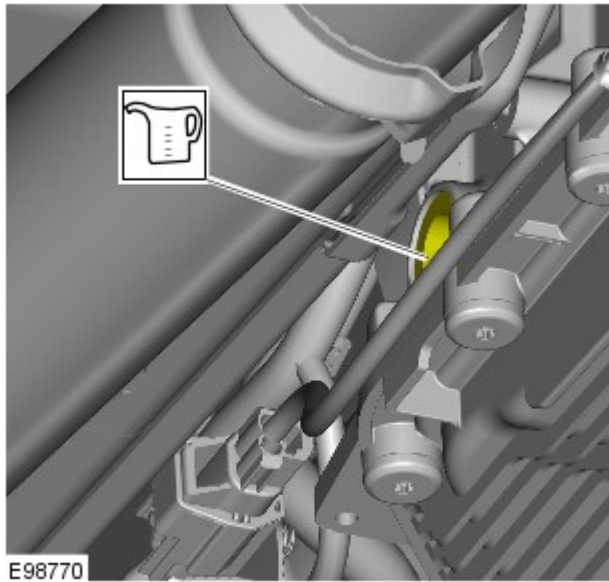
Refer to: [Engine Undershield](#) (501-02 Front End Body Panels, Removal and Installation).

10.



- Remove the oil filler plug, do not discard.
- If fluid flows out, proceed to Step 12.
- If fluid does not flow out, proceed to Step 11.
- *Special Tool(s):* [307-452](#)

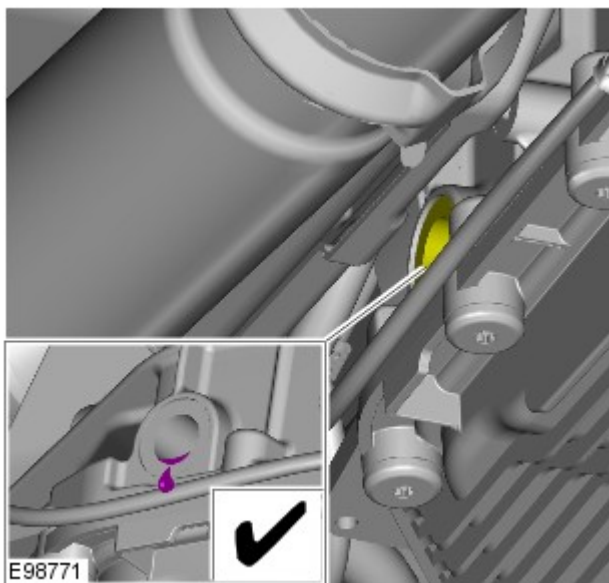
11.



- Fill oil through the overflow hole until the level inside is high enough that oil starts to trickle back out of the same hole.

Refer to: [Specifications](#) (307-01A Automatic Transmission/Transaxle - V6 S/C 3.0L Petrol , Vehicles With: 8HP70 8-Speed Automatic Transmission RWD, Specifications).

12.

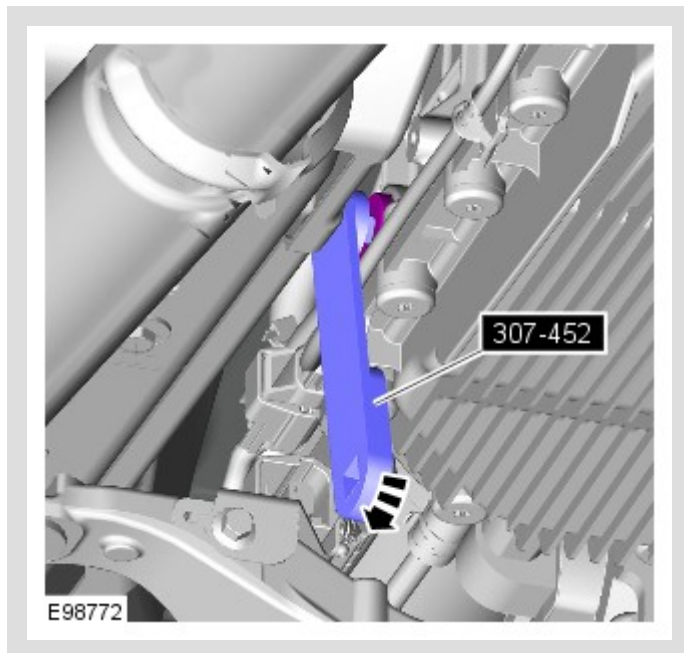


- Allow the transmission fluid to drain from the oil filler hole until the flow almost stops to a trickle.

13.

 **NOTE:**

Install the original oil filler plug.

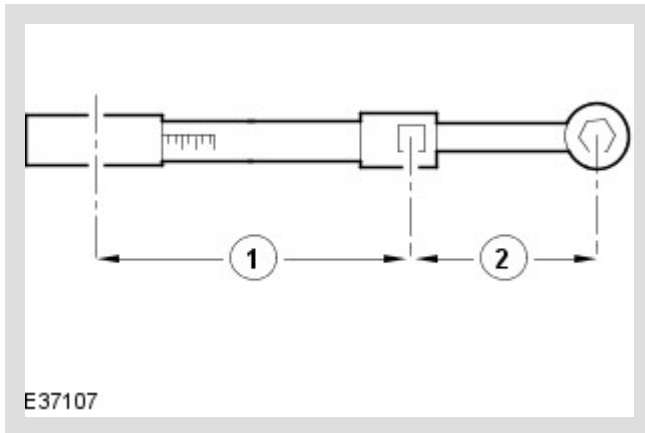


- Using the special tool, install the original oil filler plug.
- *Special Tool(s):* [307-452](#)

14.

⚠ CAUTION:

Make sure the transmission fluid fill plug is tightened to the correct specification. Failure to follow this instruction may result in damage to the transmission.



- To make sure the transmission fill plug is torqued to the correct specification. Using the special tool and torque wrench the following calculation steps must be followed.
- Step 1. Multiply 35 Nm by the effective length of the torque wrench (1).
- Step 2. Add the effective length of the special tool (2) to the effective length of the torque wrench (1).
- Step 3. Divide the total of step 1 by the total of step 2.
- Step 4. Set the torque wrench to the figure arrived at in step 3.
- Tighten the transmission fluid fill plug to the torque given by the calculation.

15.

- Remove the special tool.
- *Special Tool(s):* [307-452](#)

16.

⚠ CAUTION:

Clean the area around the filler plug, wipe away any excess fluid.

Remove the container.

17.

Refer to: [Engine Undershield](#) (501-02 Front End Body Panels, Removal and Installation).

18.

Lower the vehicle.

19.

Disconnect the diagnostic tool.