

***Drew
Technologies, Inc.***

Mongoose Quick Start Guide



PLEASE NOTE

Mongoose interfaces have been carefully designed and tested to comply with OBDII protocols. However, some vehicle models are not in full compliance with these protocols for various reasons. In addition, the computer control systems or sensors on any given vehicle may be malfunctioning or out of specification.

While Drew Tech's testing and the experience of thousands of Mongoose users have shown the unit to be safe and reliable, there is an inherent risk in using any product that may potentially affect the operation or driveability of your vehicle.

If you are concerned about the operation of your vehicle at any time while using Mongoose:

- * Pull off the roadway immediately or as soon as it is safe to do so.
- * Disconnect Mongoose from the OBDII port.
- * Consult a licensed mechanic or automobile service center.

Report any issues or concerns to our Technical Support Dept. at support@drewtech.com. We are open Monday through Friday, 9:00 a.m. to 5:30 p.m. Eastern Time. We maintain an active database of the feedback we receive, and your comments can help us continuously improve the product.

Contents

| | |
|--|-----------|
| IMPORTANT INFORMATION..... | 4 |
| COPYRIGHT & TRADEMARKS | |
| LIMITED WARRANTY | |
| INTRODUCTION | 5 |
| GETTING TO KNOW MONGOOSE | 5 |
| SETTING UP THE MONGOOSE..... | 6 |
| Install the Mongoose software on your computer | |
| J2534 TOOLBOX™ | 8 |
| UPDATING MONGOOSE DRIVER AND FIRMWARE | 9 |
| REPROGRAMMING | 9 |
| MONGOOSE CAPABILITIES..... | 10 |
| SPECIFICATIONS AND PIN-OUT..... | 10 |
| TROUBLESHOOTING AND SUPPORT | 11 |
| If all else fails... | |

IMPORTANT INFORMATION

COPYRIGHT & TRADEMARKS

Copyright 1999–2011 Drew Technologies, Inc., All Rights Reserved. Mongoose, CarDAQ, DashDAQ, ScanDAQ, CarDAQ2534, and J2534 ToolBox are registered trademarks of Drew Technologies, Inc. All other trademarks and brand names are the property of their respective owners.

LIMITED WARRANTY

Drew Technologies, Inc. guarantees that every Mongoose is free from physical defects in material and workmanship under normal use for one year from the date of purchase.

IN NO EVENT SHALL DREW TECHNOLOGIES, INC.'S LIABILITY EXCEED THE PRICE PAID FOR THE PRODUCT. DREW TECHNOLOGIES SHALL BE EXEMPT FROM ALL OTHER CLAIMS WHETHER BASED UPON DIRECT, INDIRECT, SPECIAL, INCIDENTAL, OR CONSEQUENTIAL DAMAGES RESULTING FROM THE USE OF THE PRODUCT, ITS ACCOMPANYING SOFTWARE, OR ITS DOCUMENTATION. Drew Technologies, Inc. makes no warranty or representation, expressed, implied, or statutory, with respect to its products or the contents or use of this documentation and all accompanying software, and specifically disclaims its quality, performance, merchantability, or fitness for any particular purpose. Drew Technologies, Inc. reserves the right to revise or update its products, software, or documentation without obligation to notify any individual or entity. Please direct all inquiries to:

Drew Technologies, Inc.
3915 Research Park Dr
Suite A10
Ann Arbor, MI 48108

Introduction

Thank you for choosing Mongoose! This “PassThru” vehicle interface lets you use your PC to communicate and perform ECU diagnostics and reprogramming on many modern vehicles.

The Mongoose is an SAE J2534-compliant device at a low cost. It provides a direct connection to a laptop or desktop computer via a USB 2.0 full-speed connection. All of the electronics are contained in the OBD-II connector shell, making it a compact and rugged vehicle communications tool. The Mongoose is powered by the USB connector, so there’s no need to re-start the Mongoose if it is unplugged from a vehicle.

Getting to Know Mongoose

Your package includes a Mongoose, this Quick Start Guide, and a CD that includes drivers and the Drew Technologies J2534 ToolBox.



Setting up the Mongoose

Install the Mongoose software on your computer

NOTE: Mongoose software requires Windows XP, Windows Vista (32 or 64 bit), or Windows 7 (32 or 64 bit).



Do not plug the Mongoose into your computer until you have installed the Mongoose software.

1. Insert the CD that came with your Mongoose into the CD/DVD slot of your PC. Make sure your Mongoose is not connected to the PC at this point. The Autoplay options will appear:

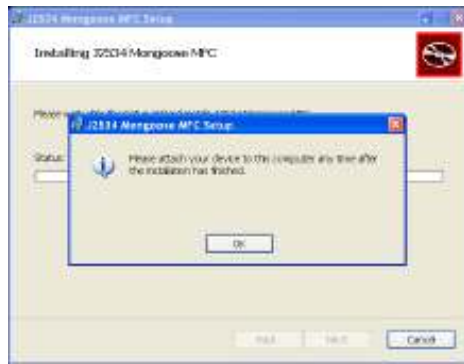


2. Click on [Run setup.exe] to begin the installation.

The Mongoose drivers and the J2534 ToolBox will now begin installation. Follow the Setup Wizard instructions.



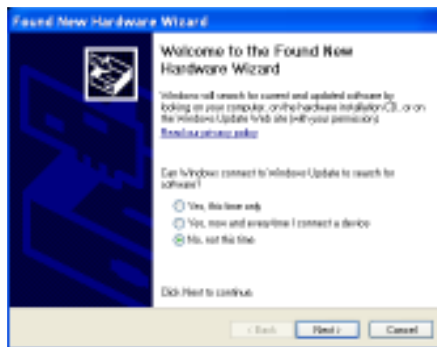
Read the End-user License Agreement. When you have read and agree to accept the terms, click in the check box next to “I accept the terms in the license agreement,” then click “Install.” When the installation is finished, you will see this screen. Click “OK.”



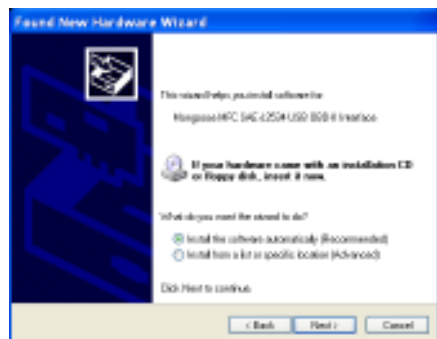
3. Now plug the Mongoose into your computer's USB port.

VISTA/7: If you are using Windows Vista or Windows 7, a message will pop up indicating the drivers are being installed. Vista/7 users are finished installing at this point and can run the software they will be using with the Mongoose.

Windows XP: If you are using Windows XP, you will see this message after the Mongoose is plugged into your computer's USB port:



Make sure “No, not this time” is selected and click “Next.” This screen appears:




Select “Install the software automatically [Recommended]” and click

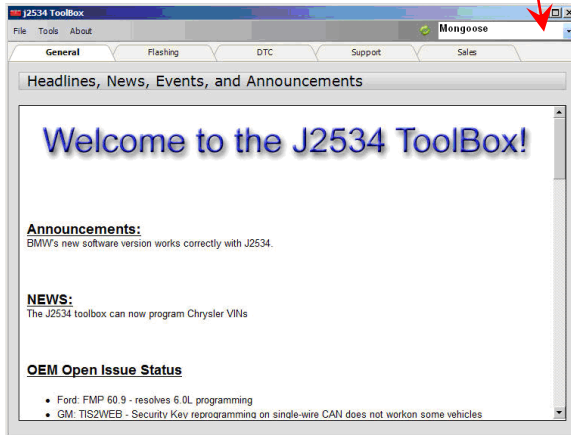
“Next.” After the progress bar finishes, click “Finish.” Windows XP users are finished installing at this point and can run the software they will be using with the Mongoose.

J2534 ToolBox™

The J2534 ToolBox is a program created by Drew Technologies to help distribute current information to technicians working with J2534. The ToolBox has up-to-date information on manufacturer reprogramming issues, links to manufacturer sites, and much more. The features of the J2534 ToolBox are explained below.



To open the J2534 ToolBox, click on the  icon on your desktop. Select your pass-thru device from the drop-down list at the top right corner.



The J2534 ToolBox has different functions divided into tabs at the top of the program:

General Tab:

Contains announcements, news, and current open issues in the J2534 realm.

Flashing Tab:

Contains links to manufacturer websites, frequently asked questions, how-to videos, and programs for completing a re-flash session.

DTC Tab:

Contains a generic/global OBDII reader for pulling diagnostic trouble codes.

Support Tab:

Contains applications to help you use your pass thru device efficiently. For information on the function of each program in the support tab, click on the [Help] button at the top of the page inside the J2534 ToolBox. You can also visit the download page at www.drewtech.com for the manual.

Sales Tab:

Presents more information about the Mongoose and other Drew Technologies products.

Updating Mongoose Driver and Firmware

Drew Technologies periodically releases updates to Mongoose drivers and firmware. Updates are necessary to solve specific problems and to make sure Mongoose is working properly with OEM software.

If you are experiencing problems during use, always make sure you have the latest firmware and driver. The Mongoose driver and firmware are located on the downloads portion of the Drew Technologies website here:

<http://www.drewtech.com/downloads/index.html>

The J2534 ToolBox has an automatic driver and firmware updater for Mongoose as well.

Reprogramming

Install and run Drew Tech's J2534 ToolBox for links to OEM ECU reprogramming applications.

Since SAE J2534 allows multiple devices to be connected at once, you must tell the OEM software application that you are using Mongoose. Each OEM software application has a different way to select the device. Please consult each software application's instructions.

Mongoose Capabilities

Below is a table of the capabilities that the manufacturer's service subscriptions provide with your Mongoose:

| | Chrysler | FORD | GM | ISO/CAN | JLR | TOYOTA |
|---------------------|----------|------|----|---------|-----|--------|
| Factory Diagnostics | | | | | • | • |
| Re-flashing | • | • | • | • | • | • |
| Key re-programming | | • | • | | • | • |

Jaguar/Land Rover and Toyota provide dealer level capability.

Drew Tech also offers DashDAQ-PC software application to read Diagnostic Trouble Codes and data-log generic and manufacturer-specific OBDII parameters. Obtain a free 30 day trial of DashDAQ-PC by visiting www.drewtech.com

Specifications and Pin-out

Currently there are six variations of the Mongoose J2534 device:

- **Mongoose-Chrysler**
- **Mongoose FORD**
- **Mongoose GM**
- **Mongoose ISO/CAN**
- **Mongoose-JLR**
- **Mongoose Toyota**

Mongoose vehicle connector pin assignments:

| Pin # | Chrysler | FORD | GM | ISO/CAN | JLR | TOYOTA |
|-------|---------------|--------|--------|---------|----------------|--------|
| 1 | | | SW CAN | | | PS GND |
| 2 | J1850+ | J1850+ | J1850+ | | J1850+ | J1850+ |
| 3 | | | | | CAN 2+ /K-LINE | |
| 4 | | | | | | |
| 5 | GND | GND | GND | GND | GND | GND |
| 6 | CAN+ /SCI | CAN+ | CAN+ | CAN+ | CAN 1+ | CAN+ |
| 7 | SCI | K-Line | | K-Line | K-LINE | K-Line |
| 8 | | | | | ROSCO | |
| 9 | SCI | | | | | PS GND |
| 10 | | J1850- | | | J1850- | |
| 11 | | | | | CAN 2- | |
| 12 | SCI | | | | PS GND | PS 5V |
| 13 | | FEPS | | | FEPS | |
| 14 | CAN- /SCI | CAN- | CAN- | CAN- | CAN 1- | CAN- |
| 15 | L-Line/PS GND | L-Line | | L-Line | L-LINE PS GND | SCI |
| 16 | VBatt | VBatt | VBatt | VBatt | VBatt | VBatt |

PS GND = Pin Switched to Ground

PS 5V = Pin switched to +5V

Troubleshooting and Support

The Mongoose gets power from your computer's USB port. LEDs inside the OBDII shell indicate the status of the Mongoose.

Flashing green LED, typically means that Windows has found the device and the drivers are installed correctly. If the green light is flashing, but you cannot connect to Mongoose, contact technical support.

Continous red LED, usually means that the drivers have not been installed, or have not been installed correctly. Try reinstalling the drivers.

No LED lights when connected to a PC, may indicate a failure of the Mongoose device. Try connecting your Mongoose to another computer. If no LEDs light up on Mongoose during this second test, then contact technical support.

If these issues have been addressed and verified, and you are still having trouble, email support@drewtech.com

If all else fails...

Drew Tech is available Monday through Friday during eastern-time business hours, to answer technical support questions. Please email support@drewtech.com if you need assistance.

If technical support finds it necessary to return the Mongoose for repair, you will be asked for your contact information and provided with a Return Merchandise Authorization number (RMA#) that Drew Technologies will use to track the unit through the repair department back to you. Please write this number on the outside of your shipping box so it can be routed to the correct department. If the necessary repair is not covered by Drew Technologies' warranty, you will be contacted for payment arrangements.

If your Mongoose was purchased from an OEM equipment supplier, you may want contact your supplier first for warranty and support claims.

Other Drew Tech Products

Drew Technologies has several products available for data acquisition, diagnostics, development, testing, and reprogramming for modern vehicles. Visit www.drewtech.com for more information



CarDAQ-Plus[™] - Fully SAE J2534 compliant. Ethernet and USB connectivity to a computer, a built-in operating system for running internal programs, protocol support for all modern vehicles, and six analog inputs.



Mongoose[™] - DrewTech's family of low-cost, high-performance PassThru (SAE J2534) vehicle interfaces. Connect any laptop with USB 2.0 directly to the OBD-II (SAE J1962) connector with full-speed performance.



DashDAQ[™] - Automotive data acquisition system designed for cabin mount. The DashDAQ displays vehicle parameters on an interactive color touch-screen.



DashDAQ-PC[™] - PC software for data acquisition, diagnostics, and gauges. Use with DrewTech's SAE J2534 Interfaces.



CarDAQ-M[™] - The CarDAQ-M is Drew Technologies modular J2534 interface that can be field upgradeable for future OBD protocols requirements.