

**Your Vehicle: 2005 Jaguar S-Type (X200) V6-3.0L**
[Click Here](#)

[Vehicle](#) » [Powertrain Management](#) » [Ignition System](#) » [Ignition Switch](#) » [Technical Service Bulletins](#) » [All Technical Service Bulletins](#) » [Keyless Entry - Can't Lock Vehicle Using Remote Fob](#)

**Keyless Entry - Can't Lock Vehicle Using Remote Fob**

NUMBER: JTB00106  
(ISSUE 1)

MODEL:  
S-TYPE  
X-TYPE  
XJ  
XK

DATE: 5 JUNE 2008

SECTION: 501

Unable to Lock Vehicle With Remote Key Fob - Repair Procedure

<b>S-TYPE (X200)</b>	<b>VIN:</b>	<b>L00600 - N91220</b>
	<b>Model Year:</b>	<b>2000 - 2008</b>
<b>X-TYPE (X400)</b>	<b>VIN:</b>	<b>C00344 - J38974</b>
	<b>Model Year:</b>	<b>2002 - 2008</b>
<b>XJ (X308)</b>	<b>VIN:</b>	<b>812317 - 878717</b>
		<b>F00001 - F59525</b>
	<b>Model Year:</b>	<b>1998 - 2003</b>
<b>XJ (X350)</b>	<b>VIN:</b>	<b>G00001 - Onwards</b>
	<b>Model Year:</b>	<b>2004 - Onwards</b>
<b>XK (X100)</b>	<b>VIN:</b>	<b>001246 - 042775</b>
		<b>A00001 - A48684</b>
	<b>Model Year:</b>	<b>1997 - 2006</b>


**AFFECTED VEHICLE RANGE**
**CONDITION SUMMARY:**
**Situation:**

An issue has been identified where the vehicle will not lock while using the remote key fob but does lock while using the key. Certain models may emit an audible or visual warning to identify the vehicle has not been locked. This condition may be caused by the shutter in the ignition barrel becoming 'stuck'.

**Action:**

In the event of a customer concern of the above, follow the Repair Procedure outlined below to modify the ignition key insert switch.

**PARTS:**

No parts necessary

TOOLS:

Refer to Workshop Manual (GTR) for special tools (if required)

<i>Description</i>	<i>SRO</i>	<i>Time (Hours)</i>	<i>Condition Code</i>	<i>Causal Part</i>
Ignition key insert switch modification - XJ (X308)	<b>86.93.98</b>	<b>0.20</b>	42	XR851463
Ignition key insert switch modification - XK (X100)		<b>0.20</b>		BCC7849
Ignition key insert switch modification - S-TYPE (X200), XJ (X350)		<b>0.40</b>		XR851463
Ignition key insert switch modification - X-TYPE (X400)		<b>0.40</b>		C2S40489

*Normal warranty policy and procedures apply.*

Zoom

Sized for Print

WARRANTY:

**NOTE:** Repair procedures are under constant review, and therefore times are subject to change; those quoted here must be taken as guidance only. Always refer to DDW to obtain the latest repair time.

DDW requires the use of causal part numbers. Labor only claims must show the causal part number with a quantity of zero.

REPAIR PROCEDURE

VERIFY LOCKING SYSTEM OPERATION

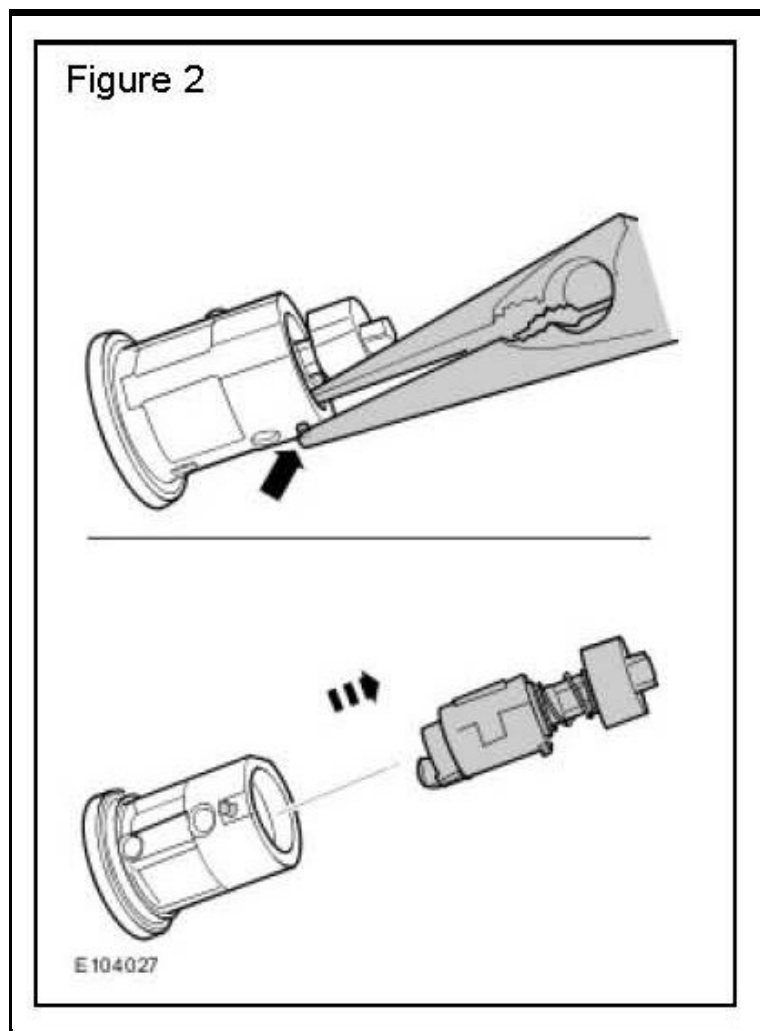
1. Verify operation of vehicle locking system.
2. Verify operation of all doors, hoods, and luggage compartment latches.

MODIFY IGNITION KEY INSERT SWITCH

**NOTE:** Global Technical Reference (GTR) lookup sequence is as follows:

GTR Home > NAS > Model > Service Information > Model Year > Workshop Manual > 2: Chassis > 211: Steering System

1. Refer to Workshop Manual (GTR) section 211: Steering System to remove the ignition lock cylinder.
2. Release the ignition barrel from the housing by:
  - ^ Insert ignition key into barrel.
  - ^ Rotate key to position I.
  - ^ Push in the pin.
  - ^ Gently pull the ignition barrel from the housing.
3. Remove key from ignition barrel.

[Zoom](#)[Sized for Print](#)

4. Release the bulking tumbler by (Figure 2):

- ^ Using suitable needle-nose pliers, lever the small locking pin 'out'.
- ^ Slide out ignition barrel from lock cylinder.

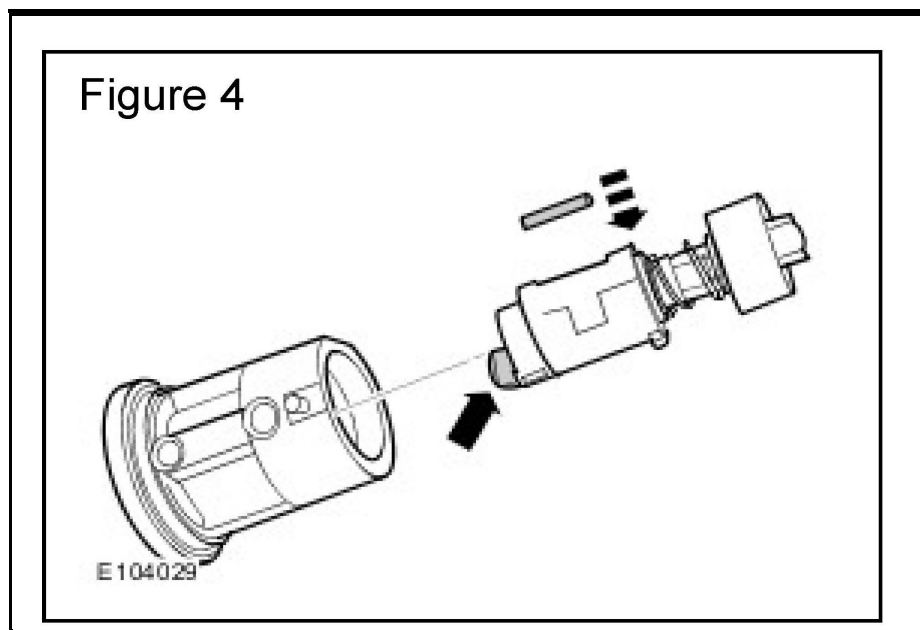
5. Remove lock pack from ignition barrel to gain access to lock pack and bulking tumbler.

[Zoom](#)[Sized for Print](#)

6. Swivel and remove the bulking tumbler from the lock pack. (Figure 3)
7. Examine the arrowed area of the bulking tumbler for burrs or sharp edges. (Figure 3)  
**CAUTION:** Do not remove excess material.
8. Using emery cloth or a file, gently remove any burrs or sharp edges, being careful to not remove excess material. (Figure 3).

#### REASSEMBLE IGNITION BARREL

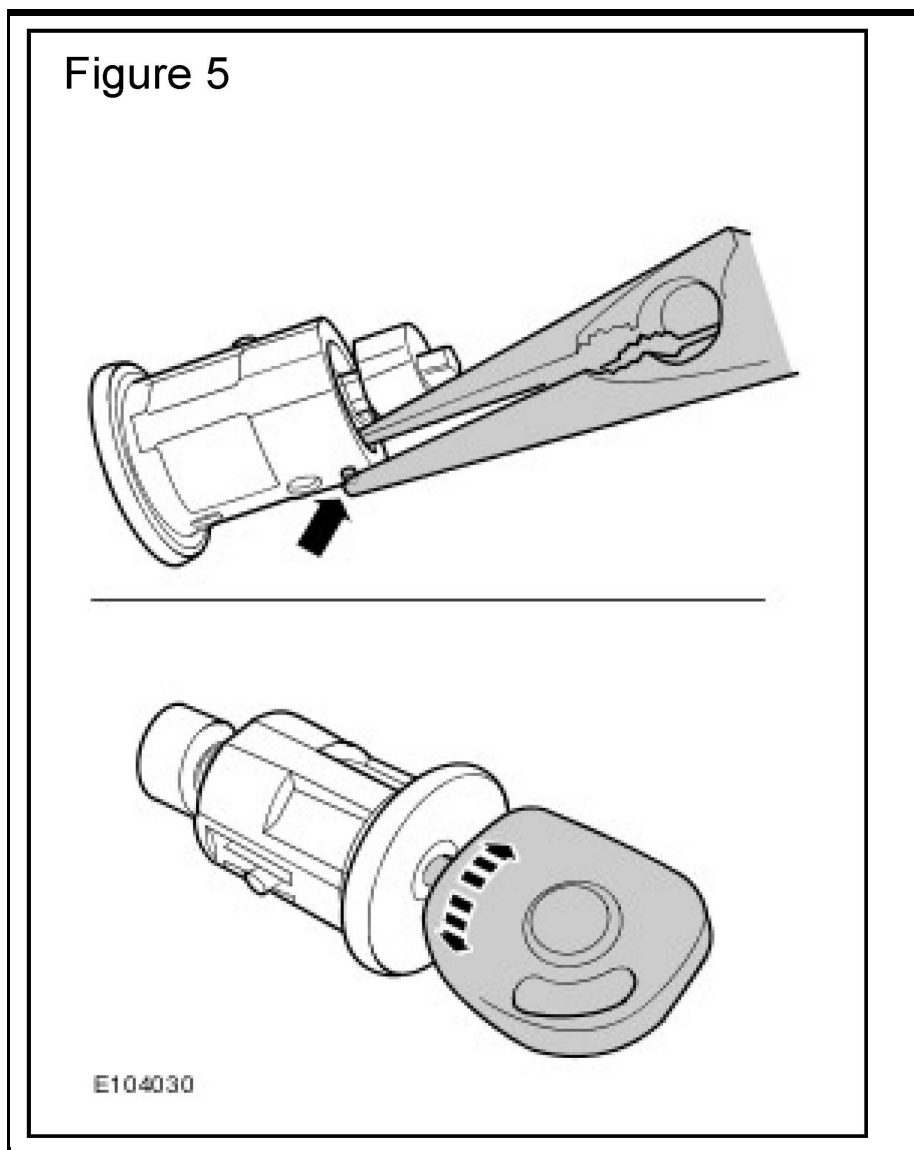
**CAUTION** WHEN FITTING THE BULKING TUMBLER ENSURE IT IS FACING UPWARDS AND SLIDES FREELY. USING GREASE KSP205 FROM THE SQUEAKS AND RATTLE KIT (JLM21204) GREASE LOCK CYLINDER.



Zoom

Sized for Print

1. Ensure the roll pin is in its normal position. (Figure 4)
2. Assemble the lock pack.

[Zoom](#)[Sized for Print](#)

3. Insert ignition barrel into the lock cylinder. (Figure 5)

4. Using suitable needle-nose pliers, install the pin. (Figure 5)

5. Insert key into lock cylinder and turn to position I. (Figure 5)

6. Slide lock cylinder into the ignition barrel, pressing the locking pin flush with the outer face of the barrel.

7. Verify smooth operation of lock cylinder by:

^ Applying finger pressure to the switch drive.

^ Rotating ignition key through all positions.

**NOTE:** Global Technical Reference (GTR) lookup sequence is as follows:

GTR Home > NAS > Model > Service Information > Model Year > Workshop Manual > 2: Chassis > 211: Steering System

8. Refer to Workshop Manual (GTR) section 211: Steering System to install the ignition lock cylinder into the ignition lock cylinder housing.

[Account](#) | [Vehicle](#) | [Help](#) | [Contact](#) | [AutoZone Community](#) | [Exit](#)