

Subject

INSTRUMENT CLUSTER WARNINGS

Model: S-TYPE

Year: 2002.5 to 2003

VIN M45255 to M70720

Section: 413

Instrument Panel

Sub-Section: 413-01

Instrument Cluster

Summary

S413-02v2: This Technical Bulletin has been issued to address customer complaints of spurious warning lamp illuminations (Oil, Electronic Parking Brake etc). These may be accompanied by various system malfunctions such as fuel gauges indicating empty with substantial fuel in the tank, speedometer needles dropping to zero, direction indicator warning flashing at twice the normal speed etc.

The concern in the majority of cases has been temporarily resolved by carrying out a battery hard reset.

This Technical Bulletin has been issued for the change in the configuration procedure for the instrument cluster that now includes steering column calibration, and is a replacement for Technical Bulletin S413-02. Please destroy all copies of S413-02 and replace it with this Technical Bulletin S413-02v2.

Action

Instrument Cluster (IC) assemblies with revised software should be installed to resolve this issue. Replacement should be undertaken on a customer complaint basis only, with the exception that if a Dealer is aware of any vehicle that has had repeat failures the IC should be replaced at the first opportunity. Follow the workshop procedure outlined below.

Workshop Procedure

Note: Ensure all programmed keys and locking remotes are available.

- 1 Open driver's door and luggage compartment lid.
- 2 Remove instrument Cluster (IC) (see Workshop Manual, JTIS CD ROM, section: 413-01).

Note: Before re-installing the IC, displacement of the steering column is required to read bar code label on upper face of steering column.

- 3 Undo and remove drivers side dash liner undertray.
- 4 Undo and remove steering column lower cowl securing screws. (See Fig. 1)

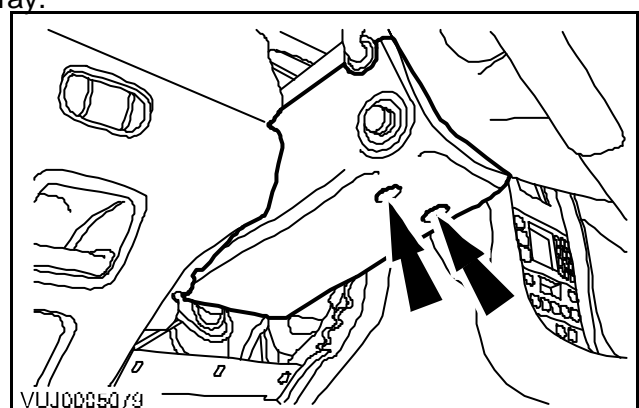


Fig. 1

- 5 Remove steering column lower cowl and disconnect electrical connector from steering column control switch. (See Fig. 2)

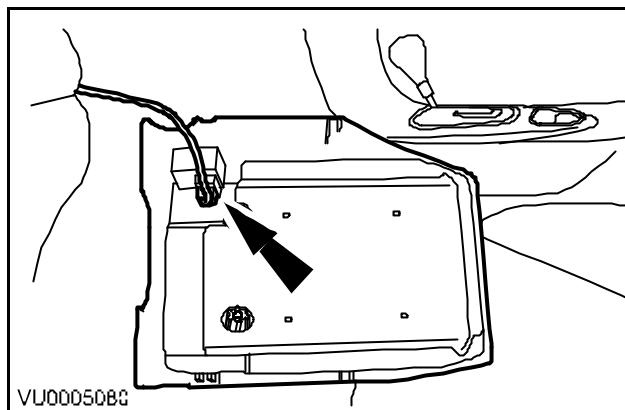


Fig. 2

- 6 Undo and remove steering column to body securing nuts. (See Fig. 3)

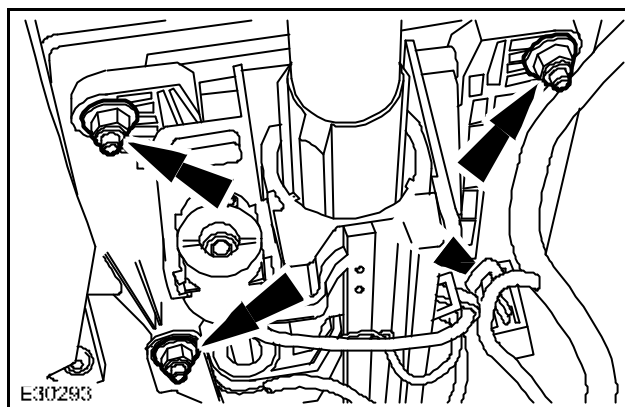


Fig. 3

- 7 Lower steering column sufficient amount to read bar code label on upper face of steering column.

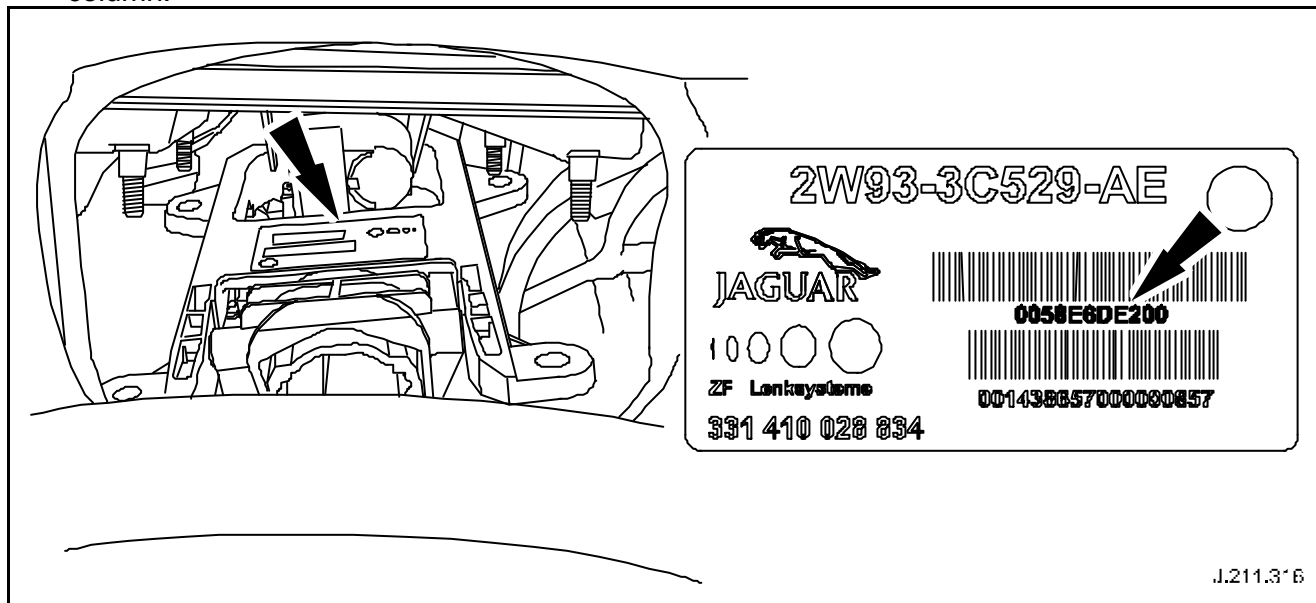


Fig. 4

- 8 Read and make note of eleven digit alpha-numeric code from bar code label. (See Fig. 4)

WARNING: FAILURE TO ALIGN BRAKE PEDAL CRASH BRACKET CORRECTLY MAY RESULT IN PERSONAL INJURY OR COMPONENT DAMAGE.

- 9 Install steering column and brake pedal crash bracket to vehicle.

- 10 Install steering column to body securing nuts and tighten to 25Nm in sequence shown. (See Fig. 5)

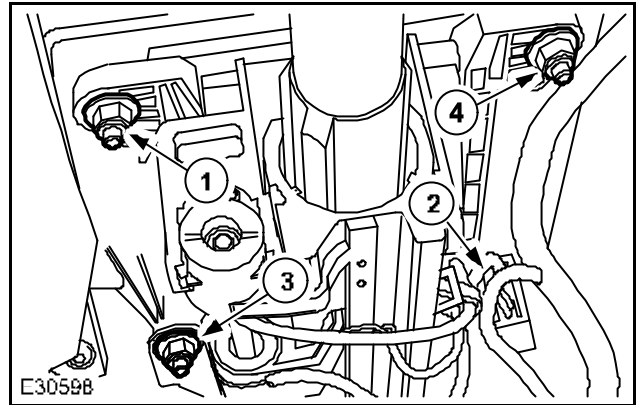


Fig. 5

- 11 Install steering column control switch electrical connector. (See Fig. 6)

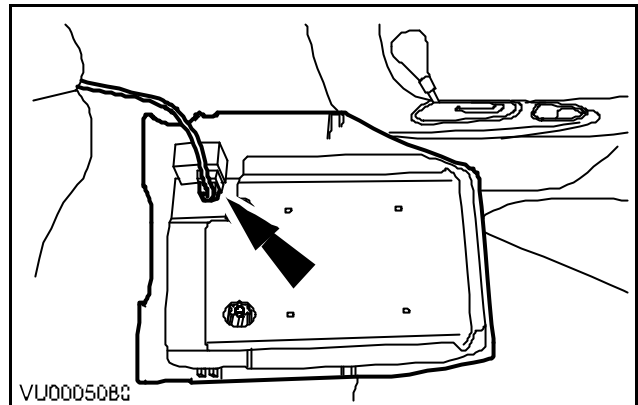


Fig. 6

- 12 Install steering column lower cowl. Install and fully tighten securing screws. (See Fig. 7)

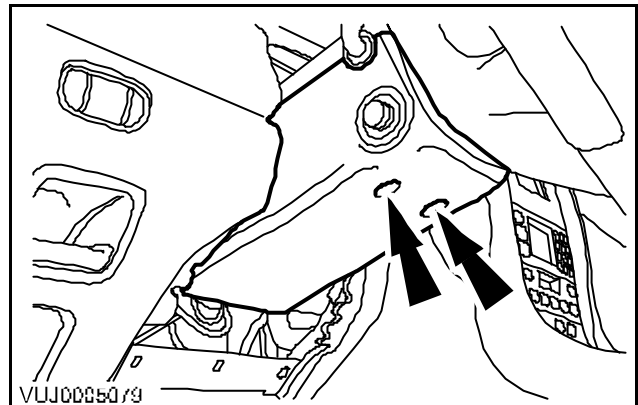


Fig. 7

- 13 Install and tighten driver's side dash liner undertray.
 14 Install new IC (see Workshop Manual, JTIS CD ROM, section: 413-01).
 15 Position WDS alongside vehicle, switch 'ON' Portable Test Unit (PTU) and allow software to load.

Note: Worldwide Diagnostic System (WDS) must be loaded with WDS CD release JTP 759/23 or later.

- 16 Connect PTU to vehicle via diagnostic cable.
 17 Navigate to and run 'configure New Instrument Cluster' application.
 18 After the re-program of IC is complete, switch 'OFF' PTU, disconnect and return WDS to original location.

Parts Information

The following parts must be ordered via Jaguar Cars Parts Operations (or through NSC/Importer).

Description	Market	Part Number	Quantity
Instrument Cluster	All except 4.2 SC/UK/Canada/Mexico/ Gulf Coast Countries/USA	XR8 42729	1
Instrument Cluster	UK only except 4.2 SC	XR8 42730	1
Instrument Cluster	Canada/Mexico/Gulf Coast Countries except 4.2 SC	XR8 42731	1
Instrument Cluster	USA except 4.2 SC	XR8 42732	1
Instrument Cluster	4.2 SC except UK/Canada/Mexico/Gulf Coast Countries/USA	XR8 42733	1
Instrument Cluster	4.2 SC UK only	XR8 42734	1
Instrument Cluster	4.2 SC Canada/Mexico/Gulf Coast Countries only	XR8 42735	1
Instrument Cluster	4.2 SC USA only	XR8 42736	1

Warranty Information

Description	SRO	Labor Time Allowance	Warranty Code	Causal Part
Install new Instrument Cluster	88 20 01	1.5 Hours	MB-BB-42	XR8 42731