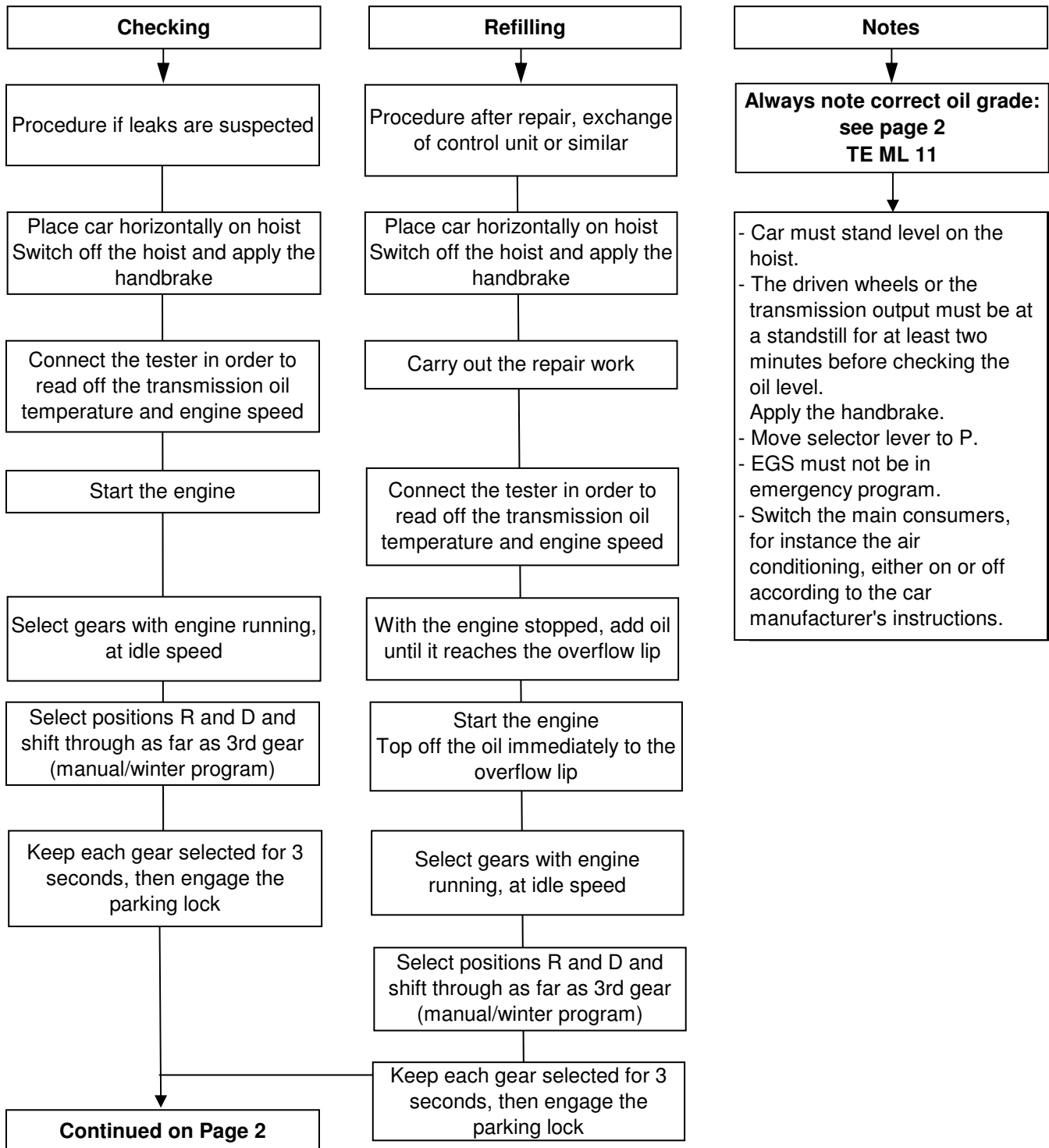




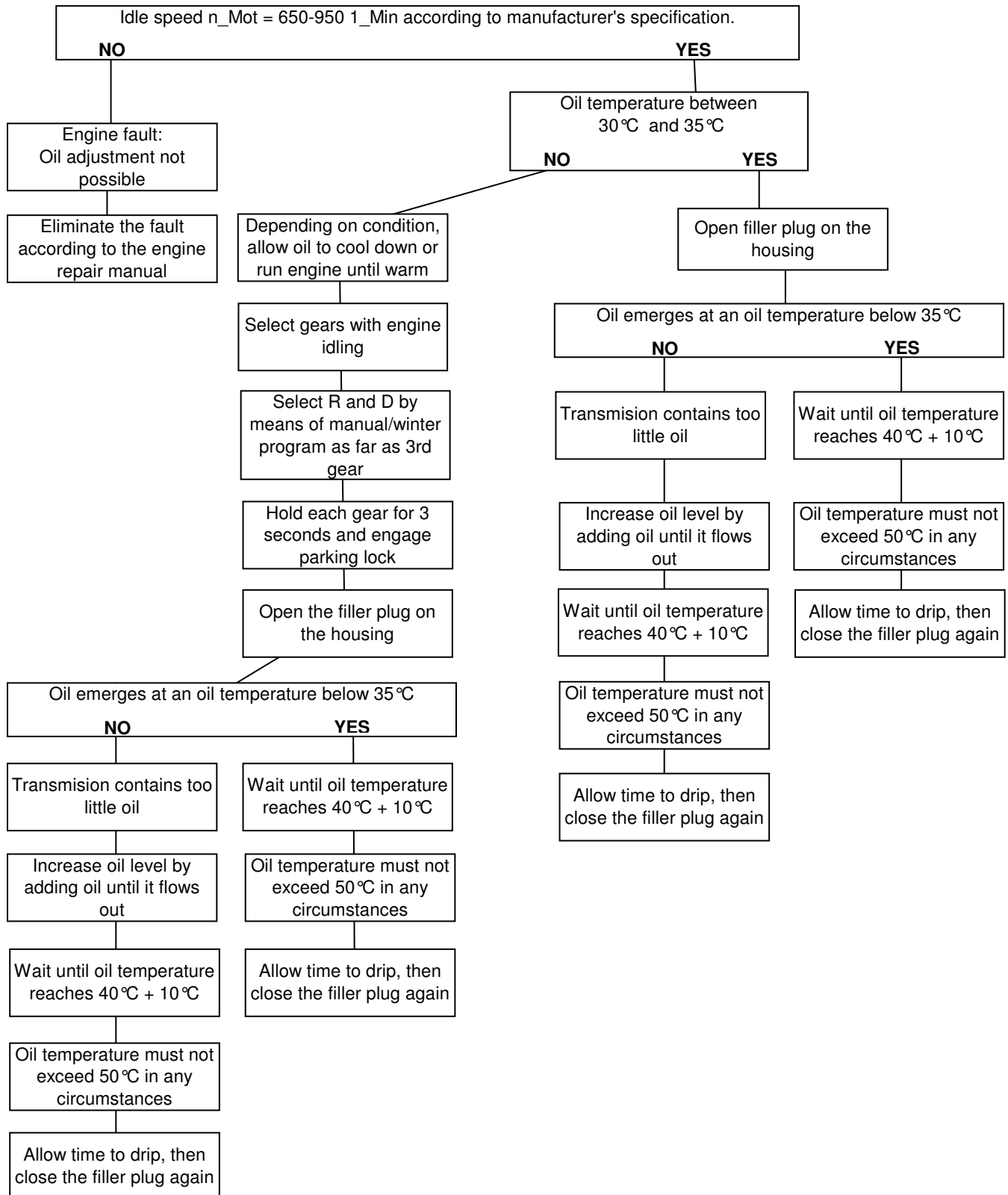
6HP26 / 6HP28 General Transmission Oil Filling Procedure

**Adding oil to 6HP26 / 6HP28 automatic transmission
- general - up to overflow at 40 °C**





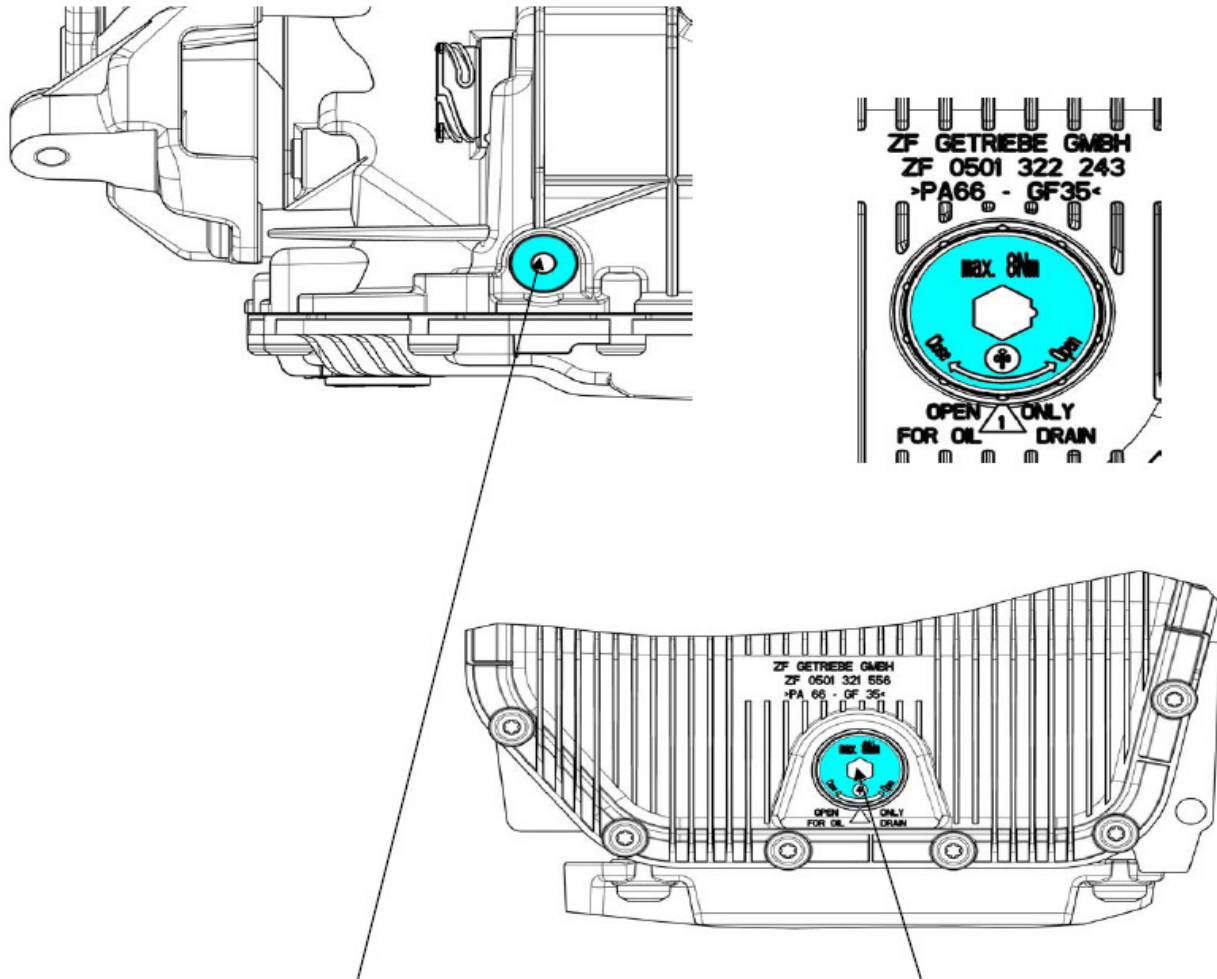
6HP26 / 6HP28 General Transmission Oil Filling Procedure (continued)





6HP26 / 6HP28 General Transmission Oil Filling Procedure (continued)

Oil service 6HP26 Ford



Oil filler screw and oil level screw	M18X1.5
Internal hexagon	8 mm
Tightening torque	35 Nm ± 3.5 Nm

Oil drain plug	M24X1
Internal hexagon	10 mm
Tightening torque	8 Nm