

Checking and Top-up

Check Engine Oil Level

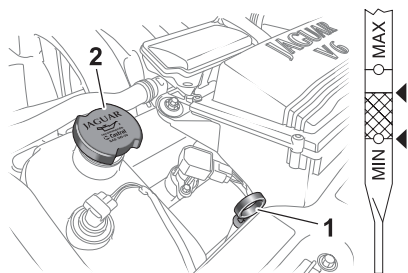
The oil consumption of your engine is influenced by many factors: new engines reach the normal value only after approximately 3,000 miles (5,000 km). Under high loads your engine will also consume more oil.

Check the oil level regularly with the vehicle on flat, level ground. Refer to page 163 for dipstick and oil filler locations.

It is preferable to check the oil level after the vehicle has been standing, that is, with the engine completely cold.

If the engine has been started do not check the oil level until the engine has reached normal operating temperature. Stop the engine and wait for a minimum of 5 minutes to allow the oil to drain back into the sump.

Procedure



JOL2684

Remove the dipstick (1) and wipe clean with a non-fluffy cloth. Replace fully, then withdraw the dipstick. If the oil level is above the minimum mark on the dipstick then no additional oil is required.

If the oil level reaches the minimum level, remove the oil filler cap (2) and add oil, to the quantity and specification shown: refer to Recommended Engine Oil.

Refit the filler cap and securely tighten it by hand.

Caution: Do not use oil additives of any type. Use only specified lubricants.

Recommended Engine Oil

Jaguar recommends 



When the oil level is at the lower dipstick mark, add 1 quart (1 litre) of oil.

Oil specification -API SL/EC and ILSAC GF-3

When topping up between oil changes, make sure that you use oil that has the correct quality level (API service) and viscosity grade. Your vehicle's warranty may be invalidated if damage is caused by use of improper engine oil.

Note: For maximum fuel economy, 5W-30 oil is recommended.

SAE Viscosity Rating - For climates ranging from -22°F (-30°C) to +122°F (+50°C), the following oil viscosities may be used:

0W-30

5W-30 (preferred)

0W-40

5W-40

Note: It is recommended that the oil level is topped up using oil of the same viscosity. If you are unsure which oil viscosity is used in your car, your Jaguar Retailer will be able to advise.