



INTRODUCTION TO THE ORDER GUIDE FOR THE 2012MY XJ



CONTENTS OF THE ORDER GUIDE:

- ▶ Specifications - Basic vehicle specs
- ▶ Equipment - Standard and optional equipment OXO chart by model
- ▶ Options - Options and packages by model
- ▶ Color & trim - Color and trim charts
- ▶ Wheels - Available wheels with images

NOTES ON ORDERING THE 2012 XJ:

- ▶ Two steering wheels are available in the XJ: **an all-leather wheel** and a **wood/leather wheel**. The wood/leather wheel is available ONLY with gloss wood veneers.

CHANGES FOR 2012 MODEL YEAR:

- ▶ XJ: Luxury Pack modified and renamed Portfolio Pack
- ▶ XJL: XJL model renamed "XJL Portfolio"; Portfolio side vent badge added
- ▶ XJL: Added optional Executive Package
- ▶ Supersport: RSE added as standard equipment; ACC removed as standard
- ▶ XJL Supersport: Added rear seat enhancements (recline, massage, etc)

See the 2012MY XJ Product Brief on the Product & Distribution website for complete details

KNOWN ORDERING ISSUES:

- ▶ Items identified as "late availability" begin production fall 2011

UPDATES:

- ▶ 4/15: Temporary paint availability changes due to Japanese earthquake/tsunami

NOTE: Changes in standard equipment, options or prices can occur. Jaguar reserves the right to change product specifications at any time without incurring obligations.



2012MY XJ SPECIFICATIONS

Version: V1_04-18-11

	XJ 5100	XJL 5110	XJ Supercharged 5120	XJL Supercharged 5130	XJ Supersport 5140	XJL Supersport 5150
Model Year	2012	2012	2012	2012	2012	2012
Body Style	Four-door Sedan	Four-door Sedan	Four-door Sedan	Four-door Sedan	Four-door Sedan	Four-door Sedan
Engine	Naturally aspirated 5.0L V8 AJ133 Gen III	Naturally aspirated 5.0L V8 AJ133 Gen III	Supercharged 5.0L V8 AJ133 Gen III SC	Supercharged 5.0L V8 AJ133 Gen III SC	Supercharged 5.0L V8 AJ133 Gen III SC	Supercharged 5.0L V8 AJ133 Gen III SC
Compression Ratio	11.5:1	11.5:1	9.5:1	9.5:1	9.5:1	9.5:1
Horsepower @ RPM	385 @ 6,500	385 @ 6,500	470 @ 6,000-6,500	470 @ 6,000-6,500	510 @ 6,000-6,500	510 @ 6,000-6,500
Torque @ RPM	380 @ 3,500	380 @ 3,500	424 @ 2,500-5,500	424 @ 2,500-5,500	461 @ 2,500-5,500	461 @ 2,500-5,500
Transmission	Six-speed automatic	Six-Speed automatic	Six-Speed automatic	Six-Speed automatic	Six-Speed automatic	Six-Speed automatic
0-60 mph	5.4 sec	5.4 sec	4.9 sec	4.9 sec	4.7 sec	4.7 sec
Top Speed (limited)	121 mph	121 mph	155 mph (121 mph w/ 19" wheels)	155 mph (121 mph w/ 19" wheels)	155 mph (121 mph w/ 19" wheels)	155 mph (121 mph w/ 19" wheels)
Fuel Economy City/ Highway/ Combined (EPA estimates)	16 / 23 / 19	15 / 22 / 18	15 / 21 / 17	15 / 21 / 17	15 / 21 / 17	15 / 21 / 17
Wheelbase (in.)	119.4	124.3	119.4	124.3	119.4	124.3
Overall Length (in.)	201.7	206.6	201.7	206.6	201.7	206.6
Overall Width (in., incl. mirrors.)	83.1	83.1	83.1	83.1	83.1	83.1
Overall Height (in.)	57.0	57.0	57.0	57.0	57.0	57.0
Curb Weight (lbs.)	4,045	4,131	4,281	4,323	4,281	4,323
Turning Circle	40'4"	41'7"	40'4"	41'7"	40'4"	41'7"
Tires	Front: 245/45R19 Rear: 275/40R19	Front: 245/45R19 Rear: 275/40R19	Front: 245/40R20 Rear: 275/35R20	Front: 245/40R20 Rear: 275/35R20	Front: 245/40R20 Rear: 275/35R20	Front: 245/40R20 Rear: 275/35R20
Standard Wheel Type and Size	19" Aleutian-style 10-spoke alloy wheels	19" Toba-style Double 5-spoke alloy wheels	20" Kasuga-style Double 10-spoke alloy wheels	20" Kasuga-style Double 10-spoke alloy wheels	20" Mataiva-style Tri 5-spoke alloy wheels	20" Mataiva-style Tri 5-spoke alloy wheels
Trunk (Useable NVMA) cubic ft	15.2	15.2	15.2	15.2	15.2	15.2
Fuel Tank (US gal.)	21.7	21.7	21.7	21.7	21.7	21.7
Brakes	Four-wheel disc/ABS	Four-wheel disc/ABS	Four-wheel disc/ABS	Four-wheel disc/ABS	Four-wheel disc/ABS	Four-wheel disc/ABS
Final Drive Ratio	3.31:1	3.31:1	3.31:1	3.31:1	3.31:1	3.31:1



2012MY XJ STANDARD & OPTIONAL EQUIPMENT



Version: V1_04-18-11

TECHNICAL DATA	XJ 5100	XJL 5110	XJ Supercharged 5120	XJL Supercharged 5130	XJ Supersport 5140	XJL Supersport 5150
Powertrain						
385 hp 5.0L AJ-V8 Gen III engine, naturally aspirated	●	●	-	-	-	-
470 hp 5.0L AJ-V8 Gen III engine, supercharged	-	-	●	●	-	-
510 hp 5.0L AJ-V8 Gen III engine, supercharged	-	-	-	-	●	●
Rear Wheel Drive (RWD)	●	●	●	●	●	●
Transmission						
Jaguar Sequential Shift™ 6-Speed electronic automatic transmission with steering wheel mounted paddles and Sport Mode	●	●	●	●	●	●
JaguarDrive Control™ - with Normal/ Winter/ Dynamic Modes	●	●	●	●	●	●
JaguarDrive Selector™ rotary gear selector	●	●	●	●	●	●
Steering						
Power-assisted, speed sensitive, variable ratio, rack and pinion steering	●	●	●	●	●	●
Suspension & Handling						
Adaptive Dynamics	●	●	●	●	●	●
Active Differential Control	-	-	●	●	●	●
Suspension - front coils, rear air (self-leveling) - Standard	●	●	-	-	-	-
Suspension - front coils, rear air (self-leveling) - Supercharged	-	-	●	●	●	●
Brakes & Stability Control						
Anti-Lock Braking System (ABS)	●	●	●	●	●	●
Emergency Brake Assist (EBA)	●	●	●	●	●	●
Dynamic Stability Control (DSC) with Trac DSC mode	●	●	●	●	●	●
Electric Parking Brake (EPB) drive away release	●	●	●	●	●	●
Wheels and Tires*						
19-inch Aleutian - ten-spoke alloy wheels w/ all-season tires	●	○	○ 1/ **	○ 1/ **	○ 1/ **	○ 1/ **
19-inch Toba - five double-spoke alloy wheels w/ all-season tires	○	●	○ 1/ **	○ 1/ **	○ 1/ **	○ 1/ **
19-inch Toba Polished - five double-spoke alloy w/ all-season tires	○	○	○ **	○ **	○ **	○ **
20-inch Amirante - disc style alloy wheels w/ performance tires	-	-	○	○	○	○
20-inch Kasuga - ten double-spoke alloy wheels w/ performance tires	○	○	●	●	○	○
20-inch Kasuga Polished - ten double-spoke alloy wheels w/ perf tires	○	○	○	○	○	○
20-inch Mataiva - five tri-spoke alloy wheels w/ performance tires	-	-	-	-	●	●
20-inch Orona - eight-spoke alloy wheels w/ performance tires	○	○	○	○	○	○
20-inch Orona Polished - eight-spoke alloy wheels w/ perf tires	○	○	○	○	○	○
Alloy space saver spare wheel - 18"	●	●	-	-	-	-
Alloy space saver spare wheel - 19"	-	-	●	●	●	●

* 19-inch & 20-inch wheel and tire assemblies are of low profile with a bias towards sporting attributes. Wheel and tire assemblies with low tire sidewall height will be more susceptible to damage in service.

** When Supercharged and Supersport models are fitted with 19" wheels the top speed is lowered to 121mph

EXTERIOR	XJ 5100	XJL 5110	XJ Supercharged 5120	XJL Supercharged 5130	XJ Supersport 5140	XJL Supersport 5150
Chrome/Body Colored exterior appearance						
Tailpipes - twin with chrome finishers	●	●	●	●	●	●
Chrome side power vents	●	-	-	-	-	-
Chrome side power vents - Portfolio script	○ 2/	●	-	-	-	-
Chrome side power vents - Supercharged script	-	-	●	●	-	-
Chrome side power vents - Supersport script	-	-	-	-	●	●
"XJ" or "XJL" trunk badge delete	○ 1/	○ 1/	○ 1/	○ 1/	○ 1/	○ 1/
Glass						
Rear window - heated with timer	●	●	●	●	●	●
Solar Attenuating glass	●	●	●	●	●	●
Acoustically Laminated glass (windshield and front door glass)	●	●	●	●	●	●
Panoramic glass roof w/ electric moonroof with tilt/slide operation and electric blinds	●	●	●	●	●	●
Heated front windshield	○	○	○	○	○	○
Lamps						
Xenon headlamps w/ washers, auto-leveling, auto on/off, LED signature lights	●	●	●	●	●	●
Adaptive Front Lighting, cornering lamps and Intelligent High Beam	○ 4/	○ 4/	●	●	●	●
Light Emitting Diode (LED) tail lamps	●	●	●	●	●	●
Metallic Paint						
	○ 1/	○ 1/	○ 1/	○ 1/	○ 1/	○ 1/

● = Standard ○ = Optional - = Not available
 ○ 1/ No Charge Option ○ 2/ Included in Portfolio Pack ○ 3/ Included in Executive Pack
 ○ 4/ Included in Visibility Pack ○ 5/ Included in Illumination Pack



2012MY XJ STANDARD & OPTIONAL EQUIPMENT



Version: V1_04-18-11

INTERIOR	XJ 5100	XJL 5110	XJ Supercharged 5120	XJL Supercharged 5130	XJ Supersport 5140	XJL Supersport 5150
8" Touch-screen display with controls for audio, climate control, Bluetooth® telephone connectivity and navigation	•	•	•	•	•	•
Jaguar premium analog dash clock	•	•	•	•	•	•
Intaglio with "JAGUAR" script	•	•	•	•	-	-
Intaglio with Union Jack and "JAGUAR" script	-	○ 3/	-	-	-	-
Intaglio with "JAGUAR" script - unique to Supersport	-	-	-	-	•	•
White and Phosphor blue halo illumination and Interior lighting	•	•	•	•	•	•
JaguarSense™ overhead light operation and glove box opening	•	•	•	•	•	•
Metallic foot pedals	-	-	-	-	•	•
Climate Control						
Dual zone automatic climate control with air filtration, humidity sensing and dual zone temperature control for driver and front passenger	•	-	-	-	-	-
Four zone automatic climate control with air filtration, humidity sensing and four zone temperature control for driver, front passenger and independent control for left and right rear passengers	○ 2/	•	•	•	•	•
Air quality sensor with Auto recirculation	•	•	•	•	•	•
Illuminated air vents front & rear	○ 5/	○ 5/	○ 5/	○ 5/	•	•
Mirrors & Windows						
Auto-dimming interior rear view mirror	•	•	•	•	•	•
Exterior mirrors - electric adjustment, heated, auto-dimming, power-folding with courtesy puddle lamps and memory function	•	•	•	•	•	•
Front and rear electric windows with one-touch open/close and anti-trap	•	•	•	•	•	•
Sun Blinds						
Electrically operated rear window sunblind	-	○ 3/	•	•	•	•
Manual rear side window sunblinds	-	•	-	•	-	•
Steering Wheel and Controls						
Steering column with electric adjustment for height reach with entry and exit tilt-away	•	•	•	•	•	•
Leather steering wheel: 3-spoke soft grain leather heated steering wheel with Jaguar Sequential Shift™ paddles and remote controls for audio system, cruise control, Bluetooth® telephone connectivity and Interactive Voice™	•	•	•	•	○ 1/	○ 1/
Leather and wood steering wheel: 3-spoke wood and leather heated steering wheel with Jaguar Sequential Shift™ paddles and remote controls for audio system, cruise control, Bluetooth® telephone connectivity and Interactive Voice™	○	○	○ 1/	○ 1/	•	•
Note: wood steering wheel only available with gloss wood veneers: <ul style="list-style-type: none"> • For XJ & XJL - Figured Ebony, Burl Walnut • For Supercharged - Rich Oak, Figured Ebony, Burl Walnut • For Supersport - Walnut Curl, Figured Ebony with Ribbon Inlay, Rich Oak with Linear Inlay 						
3-flash lane change indicators	•	•	•	•	•	•
Storage						
Front center console with illuminated storage compartment, auxiliary power socket and armrest	•	•	•	•	•	•
Twin front cupholders (32oz) with sliding cover	•	•	•	•	•	•
Rear Center Armrest w/ twin cupholders (20oz)	•	•	•	•	•	•
Rear Coat Hooks	•	•	•	•	•	•
Seating						
16/12 way power front seats - Soft grain leather	•	-	-	-	-	-
20/20 way power front seats - Soft grain leather w/ massage	○ 2/	•	•	•	-	-
20/20 way power front seats - Semi Aniline leather w/ massage	-	-	-	-	•	•
Heated and cooled active ventilated front seats	•	•	•	•	•	•
Heated rear seats	•	-	-	-	-	-
Heated and cooled active ventilated rear seats	○ 2/	•	•	•	•	•
XJL Supersport Rear Seat Comfort Pack: <ul style="list-style-type: none"> • Rear seat recline, massage and 4-way lumbar • Rear seat footrests • Front passenger seat away (fore/aft rear passenger control) • Winged headrests - front and rear 	-	-	-	-	-	•
Memory function with 3 settings for driver and passenger seats, exterior mirrors and steering column	•	•	•	•	•	•

• = Standard ○ = Optional - = Not available
 ○ 1/ No Charge Option ○ 2/ Included in Portfolio Pack ○ 3/ Included in Executive Pack
 ○ 4/ Included in Visibility Pack ○ 5/ Included in Illumination Pack



2012MY XJ STANDARD & OPTIONAL EQUIPMENT



Version: V1_04-18-11

INTERIOR (continued)	XJ 5100	XJL 5110	XJ Supercharged 5120	XJL Supercharged 5130	XJ Supersport 5140	XJL Supersport 5150
Leather Trim						
Soft grain leather seating surfaces front & rear	●	●	●	●	-	-
Semi Aniline leather seating surfaces front & rear	-	-	-	-	●	●
Soft grain leather stitched and tailored upper fascia, door top roll and armrest and center console lid with twin needle stitching	●	-	-	-	-	-
Soft grain leather stitched and tailored upper fascia, door top roll, door panner, door armrest and center console lid with twin needle stitching	○ 2/	●	●	●	-	-
Soft grain leather stitched and tailored upper fascia, door top roll, door panner, door armrest and center console lid with twin needle stitching, seat valance and rear A/C vent area	-	-	-	-	●	●
Headliner						
Morzine Headlining	●	-	-	-	-	-
Jaguar Suedecloth Premium Headlining (late availability on LWB)	○ 2/	●	●	●	-	-
Leather Headlining	-	-	-	-	●	●
Veneer Trim						
Burl Walnut	●	○ 1/	○ 1/	○ 1/	-	-
Satin Elm	○ 1/	○ 1/	○ 1/	○ 1/	-	-
Figured Ebony	○ 2/	●	○ 1/	○ 1/	-	-
Rich Oak	-	-	●	●	-	-
Piano Black	○ 1/	○ 1/	○ 1/	○ 1/	○ 1/	○ 1/
Walnut Curl	-	-	-	-	○ 1/	○ 1/
Satin Zebrano	-	-	-	-	○ 1/	○ 1/
Rich Oak with Linear Inlay	-	-	-	-	●	●
Figured Ebony with Ribbon Inlay	-	-	-	-	○ 1/	○ 1/
Carbon Fiber	○	○	○	○	○ 1/	○ 1/
Footwells						
Front and rear floor mats - leaper logo and text, trimmed in interior contrast color	●	●	●	●	-	-
Premium front and rear floor mats - Supersport logo, trimmed in interior contrast color	-	-	-	-	●	●
Stainless steel sill tread plates - Jaguar script	●	●	●	●	-	-
Stainless steel sill tread plates - Jaguar script, illuminated	○ 5/	○ 5/	○ 5/	○ 5/	●	●
Courtesy Footwell Lights - front and rear	●	●	●	●	●	●
Trunk						
Power trunk lid with adjustable opening height	●	●	●	●	●	●
Trunk runners	●	●	●	●	●	●
Trunk latch finishing plate	●	●	●	●	●	●
Trunk latch finishing plate, illuminated	○ 5/	○ 5/	○ 5/	○ 5/	●	●

SAFETY & SECURITY	XJ 5100	XJL 5110	XJ Supercharged 5120	XJL Supercharged 5130	XJ Supersport 5140	XJL Supersport 5150
Safety						
Active Head Restraints with front seat whiplash protection	●	●	●	●	●	●
Airbags: Dual-stage front airbags and side airbags for front occupants	●	●	●	●	●	●
Airbags: Side curtain airbags for front and rear	●	●	●	●	●	●
Belt minder system (Front & Rear)	●	●	●	●	●	●
Blind Spot Monitor	●	●	●	●	●	●
Safety belt pretensioners for front seating positions	●	●	●	●	●	●
Lower Anchors and Tethers for Children (LATCH) Child seat tethered-anchorage	●	●	●	●	●	●
Three-point seatbelts at all 5 seating positions	●	●	●	●	●	●
Tire Pressure Monitoring System (TPMS)	●	●	●	●	●	●
Trunk entrapment release	●	●	●	●	●	●
Security						
Security system - alarm and engine immobilizer	●	●	●	●	●	●
Remote control locking with driveaway locking	●	●	●	●	●	●

● = Standard ○ = Optional - = Not available
 ○ 1/ No Charge Option ○ 2/ Included in Portfolio Pack ○ 3/ Included in Executive Pack
 ○ 4/ Included in Visibility Pack ○ 5/ Included in Illumination Pack



2012MY XJ STANDARD & OPTIONAL EQUIPMENT



Version: V1_04-18-11

AUDIO AND COMMUNICATION	XJ 5100	XJL 5110	XJ Supercharged 5120	XJL Supercharged 5130	XJ Supersport 5140	XJL Supersport 5150
Multimedia						
Virtual Instruments - 12.3" TFT - LCD instrument cluster display	●	●	●	●	●	●
8" HD Touch-screen - controls audio, Nav, Bluetooth®, climate control	●	●	●	●	●	●
Interactive Voice™ control	●	●	●	●	●	●
iTech system - integrates Virtual Instruments, HD Touch-screen, audio single slot CD/DVD, Interactive Voice, Interactive Controls, Media Hub (including Front Media Interface, Bluetooth® v2.0 audio streaming)	●	●	●	●	●	●
Jaguar 600W premium sound system with AM/FM radio, single slot CD/DVD player, MP3 disc compatibility, hard disk drive (HDD) for audio files, EON, RDS, PTY, TA and 14 speakers	●	●	-	-	-	-
Bowers & Wilkins 1200W premium sound system with Dolby® ProLogic® IIx Surround Sound, AM/FM radio, single slot CD/DVD player, MP3 disc compatibility, hard disk drive (HDD) for audio files, EON, RDS, PTY, TA, remote power amplifier and 20 speakers including 2 subwoofers and 2 front door woofers	○	○	●	●	●	●
HD radio	●	●	●	●	●	●
SIRIUS™ Satellite Radio (subscription not included)	●	●	●	●	●	●
Rear Seat Entertainment						
Auxiliary power points in rear (x2)	●	●	●	●	●	●
Rear Seat Entertainment w/ dual 8-inch LCD screens (mounted in rear of front headrests) with Rear Multimedia Interface and Touch-screen remote control and Whitefire Emitter and 2 wireless headphones	○	○	○	○	●	●
Navigation and Phone						
Navigation System with Hard Disk Drive-based mapping	●	●	●	●	●	●
Bluetooth® v2.0 wireless technology for cell phone and audio streaming	●	●	●	●	●	●

CONVENIENCE FEATURES	XJ 5100	XJL 5110	XJ Supercharged 5120	XJL Supercharged 5130	XJ Supersport 5140	XJL Supersport 5150
Cruise control with Automatic Speed Limiter (ASL)	●	●	●	●	●	●
Adaptive Cruise Control (ACC) with Forward Alert and Advanced Emergency Brake Assist	○	○	○	○	○	○
Door puddle lamps (front & rear)	●	●	●	●	●	●
Approach Illumination (automatic via remote)	●	●	●	●	●	●
Rear Business Trays with facing in interior veneer (note: if carbon fiber veneer is selected then tray facing will be piano black)	-	○ 3/	-	●	-	●
Front Ashtray and Lighter	○ 1/	○ 1/	○ 1/	○ 1/	○ 1/	○ 1/
Garage-door/entry-gate opener	●	●	●	●	●	●
Jaguar Smart Key System™ with keyless entry	●	●	●	●	●	●
Jaguar Smart Key System™ with keyless start	●	●	●	●	●	●
Parking Aid						
Front parking aid (includes Touch-screen visual indicators)	●	●	●	●	●	●
Rear parking aid (includes Touch-screen visual indicators)	●	●	●	●	●	●
Rear camera parking aid	●	●	●	●	●	●
Rain-sensing, variable intermittent dual windshield wipers	●	●	●	●	●	●
Driver and front passenger Sun Visors w/ illuminated vanity mirrors	●	●	●	●	●	●
Illuminated rear vanity mirrors	-	●	-	●	-	●

PACKAGES	XJ 5100	XJL 5110	XJ Supercharged 5120	XJL Supercharged 5130	XJ Supersport 5140	XJL Supersport 5150
2/ Portfolio Package	○	-	-	-	-	-
3/ Executive Package	-	○	-	-	-	-
4/ Visibility Package	○	○	-	-	-	-
5/ Illumination Package	○	○	○	○	●	●
6/ Sport Package (late availability)	-	-	○	-	○	-

● = Standard ○ = Optional - = Not available
 ○ 1/ No Charge Option ○ 2/ Included in Portfolio Pack ○ 3/ Included in Executive Pack
 ○ 4/ Included in Visibility Package ○ 5/ Included in Illumination Pack



XJ

Option Packages

Portfolio Package	tbd	Upgrades XJ to XJL spec
<ul style="list-style-type: none"> • Four Zone Climate Control • Heated and cooled active ventilated rear seats • Soft grain leather stitched and tailored upper fascia, door top roll, door pannier, door armrest and center console lid with twin needle stitching • Jaguar Suedecloth Premium Headlining • XJL Interior and Exterior color palette (colors and veneers) • Chrome side power vents - Portfolio script 		
ACC Package	A1	
<ul style="list-style-type: none"> • Adaptive Cruise Control with Forward Alert • Advanced Emergency Brake Assist 		
Visibility Package	ZK	
<ul style="list-style-type: none"> • Adaptive Front Lighting, cornering lamps and Intelligent High Beam 		
Bowers & Wilkins 1200W Package	IT	
<ul style="list-style-type: none"> • 1,200 watt surround sound audio system with 20 Speakers 		
Illumination Package	tbd	
<ul style="list-style-type: none"> • Stainless steel sill tread plates - Jaguar script, illuminated • Illuminated air vents front & rear • Trunk latch finishing plate, illuminated 		

Stand Alone Options

19-inch Toba - five double-spoke alloy wheels	UV	
19-inch Toba - five double-spoke alloy wheels - Polished finish	QT	
20-inch Kasuga - ten double-spoke alloy wheels	YK	
20-inch Kasuga - ten double-spoke alloy wheels - Polished finish	YP	
20-inch Orona - eight-spoke alloy wheels	ZM	
20-inch Orona - eight-spoke alloy wheels - Polish finish	ZP	
Rear Seat Entertainment system	R3	Dual 8-inch LCD screens (mounted in rear of front headrests) w/ Touch-screen remote and Whitefire emitter and 2 wireless headphones
"XJ" trunk badge delete	JX	No cost option
Wood and Leather Heated Steering wheel	UP	Note: wood steering wheel only available with gloss wood veneers: • For XJ - Figured Ebony, Burl Walnut
Heated Front Windscreen	UM	
Front Ashtray and Lighter	CT	No cost option
Veneer		See Color & trim details
Jet Suedecloth headliner	E1	Requires Portfolio Package and Jet interior
Non-Standard Paint & Interior Combination	SO	See Color & trim details

XJL

Option Packages

Executive Package	tbd
<ul style="list-style-type: none"> • Rear Business Trays • Electric Rear Window Sunblind • Premium front and rear floor mats with Jaguar badge and contrast edge color • Wood and Leather Heated Steering wheel • Intaglio with Union Jack and "JAGUAR" script • Chrome Mirror Covers 	
ACC Package	A1
<ul style="list-style-type: none"> • Adaptive Cruise Control with Forward Alert • Advanced Emergency Brake Assist 	
Visibility Package	ZK
<ul style="list-style-type: none"> • Adaptive Front Lighting, cornering lamps and Intelligent High Beam 	
Bowers & Wilkins 1200W Package	IT
<ul style="list-style-type: none"> • 1,200 watt surround sound audio system with 20 Speakers 	
Illumination Package	tbd
<ul style="list-style-type: none"> • Stainless steel sill tread plates - Jaguar script, illuminated • Illuminated air vents front & rear • Trunk latch finishing plate, illuminated 	

Stand Alone Options

19-inch Aleutian - ten-spoke alloy wheels	LF	
19-inch Toba - five double-spoke alloy wheels - Polished finish	QT	
20-inch Kasuga - ten double-spoke alloy wheels	YK	
20-inch Kasuga - ten double-spoke alloy wheels - Polished finish	YP	
20-inch Orona - eight-spoke alloy wheels	ZM	
20-inch Orona - eight-spoke alloy wheels - Polish finish	ZP	
Rear Seat Entertainment system	R3	Dual 8-inch LCD screens (mounted in rear of front headrests) w/ Touch-screen remote and Whitefire emitter and 2 wireless headphones
"XJL" trunk badge delete	JX	No cost option
Wood and Leather Heated Steering wheel	JR	Note: wood steering wheel only available with gloss wood veneers: • For XJL - Figured Ebony, Burl Walnut
Heated Front Windscreen	UM	
Front Ashtray and Lighter	CT	No cost option
Veneer	See Color & trim details	
Jet Suedecloth headliner	tbd	Requires Jet interior, late availability on long wheelbase
Non-Standard Paint & Interior Combination	SO	See Color & trim details

XJ & XJL Supercharged

Option Packages

ACC Package	A1
<ul style="list-style-type: none"> • Adaptive Cruise Control with Forward Alert • Advanced Emergency Brake Assist 	
Illumination Package	tbd
<ul style="list-style-type: none"> • Stainless steel sill tread plates - Jaguar script, illuminated • Illuminated air vents front & rear • Trunk latch finishing plate, illuminated 	
Sport Package	tbd
<ul style="list-style-type: none"> • XJ S/C (SWB) only; late availability • Content TBD 	

Stand Alone Options

19-inch Aleutian - ten-spoke alloy wheels	LF	With all-season tires
19-inch Toba - five double-spoke alloy wheels	UV	With all-season tires
19-inch Toba - five double-spoke alloy wheels - Polished finish	QT	With all-season tires
20-inch Amirante - disc style alloy wheels	YJ	
20-inch Kasuga - ten double-spoke alloy wheels - Polished finish	YP	
20-inch Orona - eight-spoke alloy wheels	ZM	
20-inch Orona - eight-spoke alloy wheels - Polish finish	ZP	
Rear Seat Entertainment system	R3	Dual 8-inch LCD screens (mounted in rear of front headrests) w/ Touch-screen remote and Whitefire emitter and 2 wireless headphones
"XJ" / "XJL" trunk badge delete	JX	No cost option
Wood and Leather Heated Steering wheel	ZJ	Note: wood steering wheel only available with gloss wood veneers: • For Supercharged - Rich Oak, Figured Ebony, Burl Walnut
Heated Front Windscreen	UM	
Front Ashtray and Lighter	CT	No cost option
Veneer		See Color & trim details
Jet Suede cloth headliner	tbd	Requires Jet interior, late availability on long wheelbase
Non-Standard Paint & Interior Combination	SO	See Color & trim details

XJ & XJL Supersport

Option Packages

ACC Package	A1
<ul style="list-style-type: none"> • Adaptive Cruise Control with Forward Alert • Advanced Emergency Brake Assist 	
Sport + VMaxPackage	tbd
<ul style="list-style-type: none"> • XJ SS (SWB) only; late availability • Content TBD 	

Stand Alone Options

19-inch Aleutian - ten-spoke alloy wheels	LF	With all-season tires
19-inch Toba - five double-spoke alloy wheels	UV	With all-season tires
19-inch Toba - five double-spoke alloy wheels - Polished finish	QT	With all-season tires
20-inch Amirante - disc style alloy wheels	YJ	
20-inch Kasuga - ten double-spoke alloy wheels	YK	
20-inch Kasuga - ten double-spoke alloy wheels - Polished finish	YP	
20-inch Orona - eight-spoke alloy wheels	ZM	
20-inch Orona - eight-spoke alloy wheels - Polish finish	ZP	
"XJ" / "XJL" trunk badge delete	JX	No cost option
All-leather Heated Steering Wheel	S1	All-leather steering wheel is a No Cost Option, and will be selected for any non-gloss interior veneers, including: Piano Black, Satin Zebrano, Carbon Fiber
Heated Front Windscreen	UM	
Front Ashtray and Lighter	CT	No cost option
Veneer		See Color & trim details; Carbon Fiber is NCO on Supersport
Jet Soft grain leather headliner	E1	Requires Jet interior; available on both standard and long wheelbase Supersport
Tipped Leather	tbd	Tipped leather is an NCO option on Jet and Truffle interiors



2012MY XJ INTERIOR TRIM & EXTERIOR COLOR COMBINATIONS

Temporary color changes due to supplier constraints following the earthquake/tsunami in Japan

Version: V1_04-18-11

Model	Seat trim & Lower environment	Fascia & Door Upper	Seat Contrast Stitch & Piping	Headliner color	Exterior																			
					Taiga Green (TIGR)	Cashmere (CASH)	Caviar (CAVR)	Claret (CLAR)	Crystal Blue (CRBL)	Ebony (EBON)	Azurite Blue (ATBL)	Italian Racing Red* (ITRD)	Lunar Grey (LGRY)	Polaris White (POLW)	Rhodium Silver (RDSL)	Spectrum Blue (SPBL)	Stratus Grey (STGR)	Midnight Black (MONY)						
XJ (JT3) Soft grain leather, Morzine headliner	Jet	Jet	None	Ivory	○	DC	■	DC	DC	DC	○	■	DC	DC	DC	■	DC	■	DC	○	■	DC		
	Cashew	Truffle	None	Canvas	■	DC	■	DC	○	○	■	DC	○	■	DC	○	■	DC	○	■	DC	○		
	Dove	Jet	None	Ivory	○	○	○	○	■	DC	○	■	DC	DC	DC	■	DC	■	DC	○	■	DC		
	Ivory	Oyster	None	Ivory	■	DC	■	DC	■	DC	DC	DC	○	■	DC	○	■	DC	○	■	DC	DC		
XJL XJ w/ Portfolio Pack XJ & XJL Supercharged (JT5) Soft grain leather, Suedecloth headliner	Jet	Jet	Ivory	Ivory or Jet*	○	○	○	DC	DC	○	■	DC	DC	DC	■	DC	■	DC	○	■	DC	■	DC	
	Cashew	Truffle	Truffle	Canvas	■	DC	■	DC	○	○	○	○	○	○	○	○	○	○	○	○	○	○	○	○
	Ivory	Truffle	Truffle	Ivory	■	DC	○	DC	○	○	○	○	○	DC	○	○	○	○	○	○	○	○	○	○
	Ivory	Navy	Navy	Ivory	○	○	○	DC	○	DC	○	■	DC	○	DC	○	■	DC	○	■	DC	○	○	○
	Navy	Navy	Ivory	Ivory	○	■	DC	○	DC	○	DC	○	DC	DC	DC	■	DC	DC	DC	○	■	DC	○	○
	London Tan	Navy	Navy	Canvas	○	■	DC	○	DC	○	DC	○	DC	○	DC	○	DC	DC	○	■	DC	○	○	○
	London Tan	Jet	Jet	Canvas or Jet*	○	○	○	○	○	■	DC	○	○	○	○	○	DC	○	○	DC	○	■	DC	DC
	Ivory	(NEW) Jet	Jet	Ivory or Jet*	■	DC	○	○	○	■	DC	○	○	○	○	○	DC	DC	○	■	DC	○	○	DC
Ivory	Oyster	Oyster	Ivory	■	DC	■	DC	■	DC	DC	DC	○	■	DC	○	■	DC	○	■	DC	○	○	DC	
XJ & XJL Supersport (JT6) Semi Aniline leather, Leather headliner	Jet	Jet or Jet Tipped	Dove Tonal	Jet or Parchment	■	■	■	DC	DC	■	■	DC	DC	DC	■	DC	DC	DC	■	DC	■	DC	DC	
	Jet	Jet (Requires Sport Pack)	Red	Jet	■	x	x	x	■	DC	■	■	DC	DC	DC	■	DC	DC	■	DC	■	DC	DC	
	Parchment	Bordeaux	Bordeaux	Parchment	x	■	DC	x	■	■	x	■	DC	DC	■	DC	DC	■	DC	■	DC	■	DC	
	Bordeaux	Bordeaux	None	Parchment	x	■	DC	x	■	■	x	■	DC	DC	■	DC	DC	■	DC	■	DC	■	DC	
	Parchment	Navy	Navy	Parchment	x	■	DC	x	■	DC	■	■	DC	DC	■	DC	DC	■	DC	■	DC	■	DC	
	Parchment	Truffle or Truffle Tipped	Truffle	Parchment	■	DC	■	DC	DC	■	x	■	DC	DC	■	DC	DC	■	DC	■	DC	■	DC	
	London Tan	Jet	Jet stitch / Tan piping	Jet or Parchment	DC	■	■	■	■	DC	■	■	DC	DC	■	DC	DC	■	DC	■	DC	■	DC	DC

*Jet Suedecloth headliner on long wheelbase has late availability

Veneer	Code	XJ	XJ Lux Pkg	XJL	Supercharged	Supersport
Burl Walnut	TD	■ Std	■	■	■	■
Satin Elm	S3	■	■	■	■	■
Figured Ebony	FQ	■	■ Std	■ Std	■	■
Rich Oak	VV	■	■	■	■ Std	■
Carbon Fiber (cost opt)	CL	■	■	■	■	■ (NCO)
Piano Black	P3	■	■	■	■	■
Walnut Curl	W1	■	■	■	■	■
Satin Zebrano	Z2	■	■	■	■	■
Rich Oak w/linear inlays	V3	■	■	■	■	■ Std
Fig Ebny w/ribbon inlays	F2	■	■	■	■	■

Key:
 ■ Available at no charge
 DC Designer's Choice: a recommended combination
 ○ Special Order (SO) combination
 ■ Not available
 x Available at no charge but not recommended
 * Racing Colors are an extra cost option:
 RC Racing Color charge - recommended combination
 # Racing Color charge - not a recommended combination
 ■ Veneer available with wood steering wheel

Supersport Veneer & Interior combinations	Jet / Jet	Jet / Jet (Redzone stitch)	Parchment / Bordeaux	Bordeaux / Bordeaux	Parchment / Navy	Parchment / Truffle	London Tan / Jet
Carbon Fiber	DC	DC	x	■	x	x	DC
Walnut Curl	■	x	DC	DC	DC	DC	DC
Piano Black	DC	DC	■	DC	■	■	DC
Satin Zebrano	■	x	DC	■	DC	DC	DC
Rich Oak - Linear Inlay	■	x	DC	DC	DC	DC	DC
Figured Ebony - Ribbon Inlay	■	x	DC	DC	DC	DC	DC

Effect of the Japanese earthquake and tsunami:
 The paint supplier issue associated with "xiralic" pigment as outlined in Chris Marchand's letter issued on April 15th, 2011 will also affect initial 2012MY exterior color availability. These temporary actions are being taken:
 Midnight Black replaces Ultimate Black
 Azurite Blue replaces Indigo Blue
 Taiga Green replaces Botanical green
 Stratus Grey, Spectrum Blue and Caviar are temporarily unavailable but expected to be reintroduced at a later date
 Italian Racing Red has a delayed introduction

19" Wheels



Notes:

- a) 19" wheels come with all-season tires
- b) 19" wheels have a vmax limited to 121mph

19" Aleutian

Finish:
- Sparkle Silver

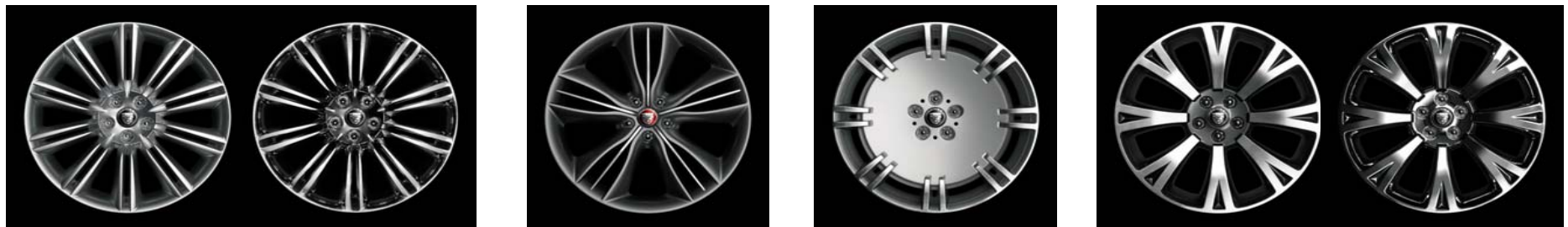
Standard on: XJ
Optional on: all

19" Toba

Finishes:
- Sparkle Silver
- Polished (limited availability)

Standard on: XJL (Sparkle Silver)
Optional on: all

20" Wheels



20" Kasuga

Finishes:
- High Gloss Silver
- Polished (limited availability)

Standard on:
XJ & XJL Supercharged (High gloss Silver)

Optional on:
All

20" Mataiva

Finish:
- High Gloss Silver with chrome detailing

Standard on:
XJ & XJL Supersport

Optional on:
None - SS only

20" Amirante

Finish:
- Sparkle Silver with diamond turned fingers

Standard on:
None - option only

Optional on:
Supercharged & Supersport

20" Orona

Finishes:
- Anthracite with diamond turned
- Polished

Standard on:
None - option only

Optional on:
All