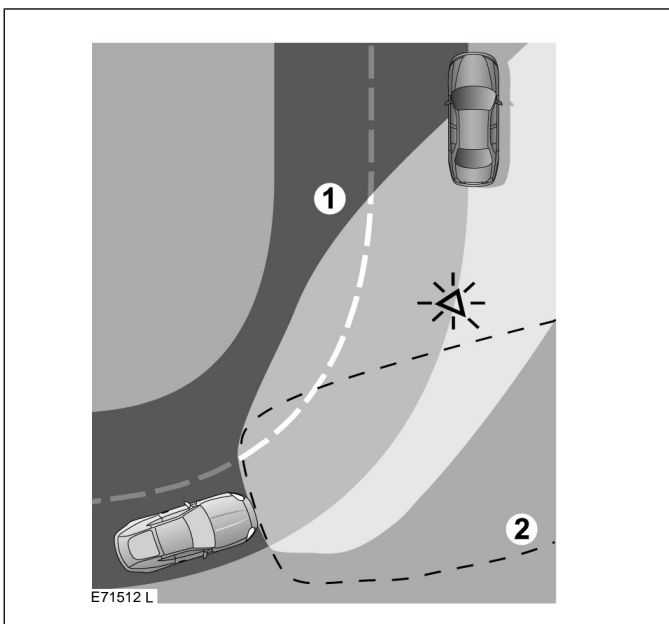
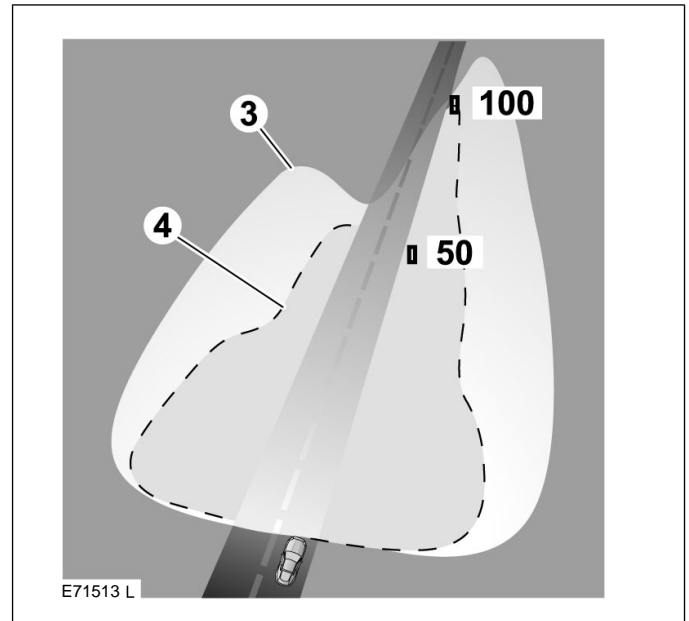


ADAPTIVE FRONT LIGHTING SYSTEM

The adaptive front lighting system (AFLS) is designed to give the driver improved visibility under varying driving conditions. The main light source consists of bi-functional (high and low beam) xenon projector units that are swiveled left or right to improve the light spread on bends in the road. The illustration shows the light spread of a vehicle fitted with AFLS (1) and a vehicle not fitted with AFLS (2).



Bi-Xenon lights (3) provide significantly improved visibility over conventional halogen lights (4).



The projector units also react dynamically in the vertical plane to the vehicle’s braking or acceleration to maximize headlight performance.

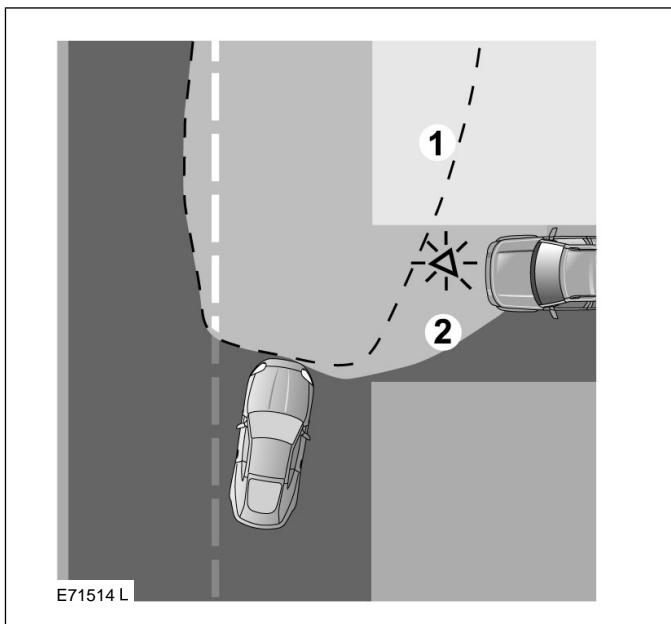
The units operate when the engine is running and the master lighting switch is set to headlights, or AUTO (if the ambient light has fallen below a preset level). When the engine is started, the headlights will swivel for a few seconds as they initiate a self-calibration cycle.

The system takes inputs from the vehicle’s road speed and steering angle to determine the amount of horizontal swivel. The amount of swivel is highest at low and maneuvering speeds and reduces as speed increases.

If reverse gear is selected, the lights return to the central position and the unit’s swiveling capability is disabled.

Static Bending Lights

Additional lighting comes from the cornering (static bending) lights, which are angled outwards from the center line of the vehicle. These lights broaden the beam of the headlights when cornering during normal night driving. The illustration shows the light spread of a vehicle not fitted with static bending lights (1) and a vehicle fitted with static bending lights (2).



The system switches on the light on receipt of an input from the vehicle's direction indicator cancel switch, activated by the turning of the steering wheel. The light is switched on regardless of whether the direction indicator is active or not. Only the light on the same side as the direction of the turn will illuminate. The lights only operate when the ignition is ON.

NOTE: Excessive rotation of the steering wheel while the ignition system is in the OFF position may cause incorrect calibration of the static bending lights (in extreme situations, the lights may operate earlier than normal). The lights are automatically recalibrated within 30 seconds of the start of a drive cycle.