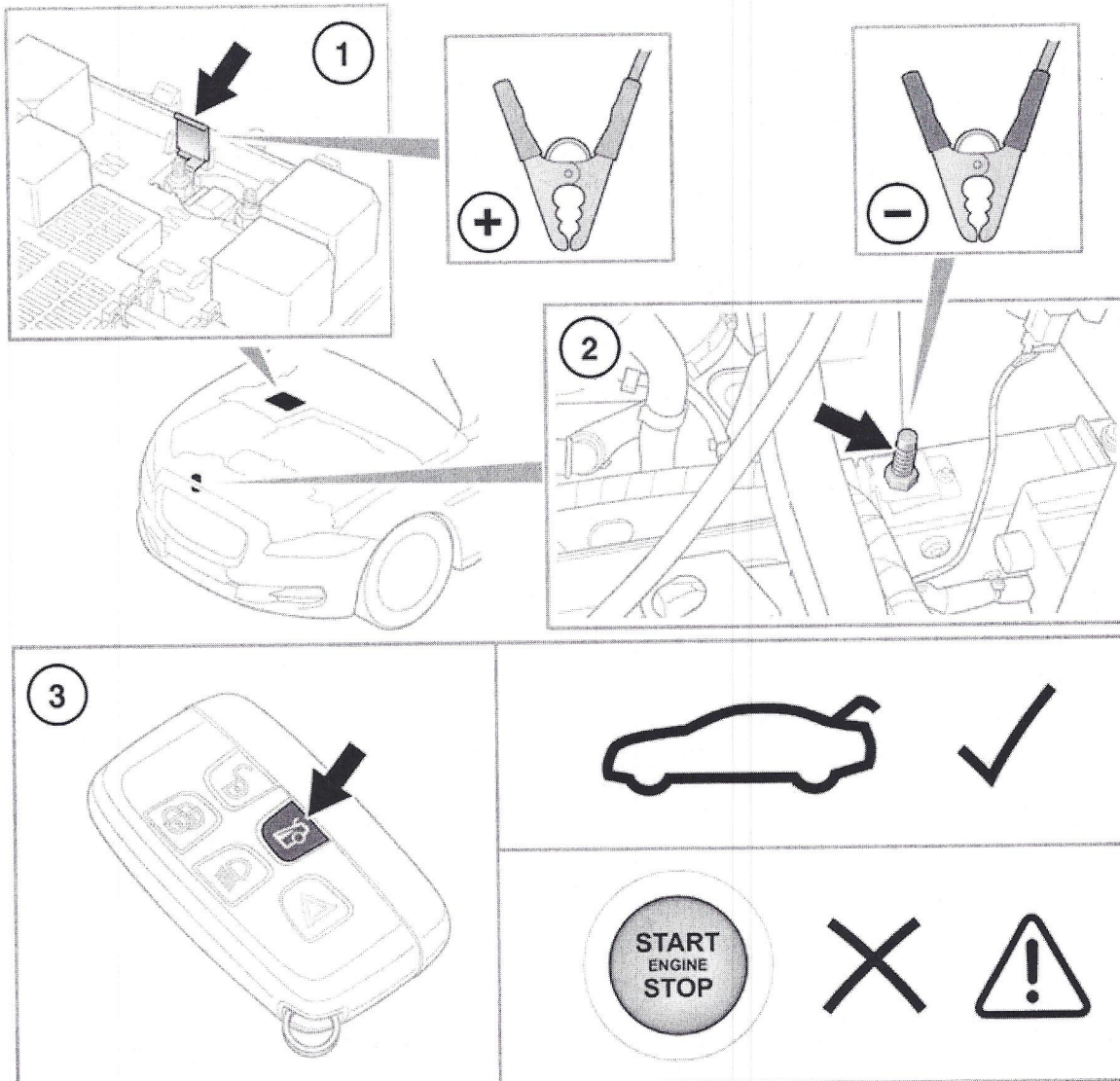


Luggage compartment



E132493

With the hood open and the engine and fuse box covers removed, connect booster cables to a suitable 12v supply. Then:-

1. Attach the positive booster cable clamp to the connection point next to the 100A Midi fuse.
2. Attach the negative booster cable clamp to the earthing post at the front of the right-hand chassis leg.

Note: The alarm may sound when the power is supplied.

3. Press the luggage compartment release button on the remote control.

NOTICE

Do not attempt to start the vehicle with power supplied in this way.

Vehicle battery

NOTICE

Do not allow battery fluid to come into contact with fabrics or painted surfaces. If battery fluid comes into contact with any surface, the surface should be washed down immediately with plenty of clean water.

Your vehicle is fitted with a low maintenance battery, which is located under the floor of the luggage compartment.

In hot climates more frequent checks of the battery fluid level and condition are required. If necessary, the battery cells can be topped up using distilled water.

BATTERY MONITORING SYSTEM (BMS)

If excessive battery discharge is occurring when the engine isn't running, the system will shut down non-essential electrical systems to protect battery power.

CONNECTING BOOSTER CABLES

⚠ WARNING

Always wear appropriate eye protection when working with batteries.

Make sure both batteries are of the 12 volt type and that the booster cables have insulated clamps and are approved for use with 12 volt batteries.

Do not disconnect the discharged battery.

Do not connect a booster cable to the negative (-) terminal of the battery. Always connect to the recommended earthing point.

Ensure the bodywork of the donor and disabled vehicles do not touch.

Note: Before connecting booster cables, ensure that the battery connections on the disabled vehicle are correct and that all electrical equipment has been switched off. To access the luggage compartment when the battery is discharged, see **74, LUGGAGE COMPARTMENT RELEASE WHEN BATTERY IS DISCHARGED.**

1. Connect the positive booster cable to the positive terminal on the donor vehicle's battery.
2. Connect the other end of the positive booster cable to the positive terminal on the disabled vehicle's battery.
3. Connect the negative booster cable to the recommended boost starting earth point of the donor vehicle.
4. Connect the other end of the negative booster cable to a chassis stud. Two are available on the left-hand side at the rear of the load space opposite the battery.
 - Check that all cables are clear of any moving components and that all 4 connections are secure.
5. Start the engine of the donor vehicle, and allow it to idle for a few minutes.
6. Start the engine of the disabled vehicle.
7. Allow both vehicles to idle for two minutes.
8. Switch off the donor vehicle.

DISCONNECTING THE BOOSTER CABLES

⚠ WARNING

To avoid serious injury use extreme caution when removing the booster cables as the engine will be running on the previously disabled vehicle. This means that you may be working close to components which are moving at high speed, carry high voltage, or may be hot.

Note: Do not switch on any electrical equipment until after the cables have been disconnected.

The engine should be running on the previously disabled vehicle and the engine switched off on the donor vehicle. Disconnect the booster cables in the exact reverse order of that used for connection.

CHARGING THE VEHICLE BATTERY

NOTICE

The battery must be disconnected and removed from the vehicle before charging.

NOTICE

Battery disconnection, removal and replacement, should only be carried out by qualified personnel. Consult your Dealer/Authorized Repairer.

REPLACING THE VEHICLE BATTERY

NOTICE

Battery disconnection, removal and replacement, should only be carried out by qualified personnel. Consult your Dealer/Authorized Repairer.



Used batteries must be disposed of correctly, as they contain a number of harmful substances. Seek advice from your Dealer/Authorized Repairer and/or your local authority.