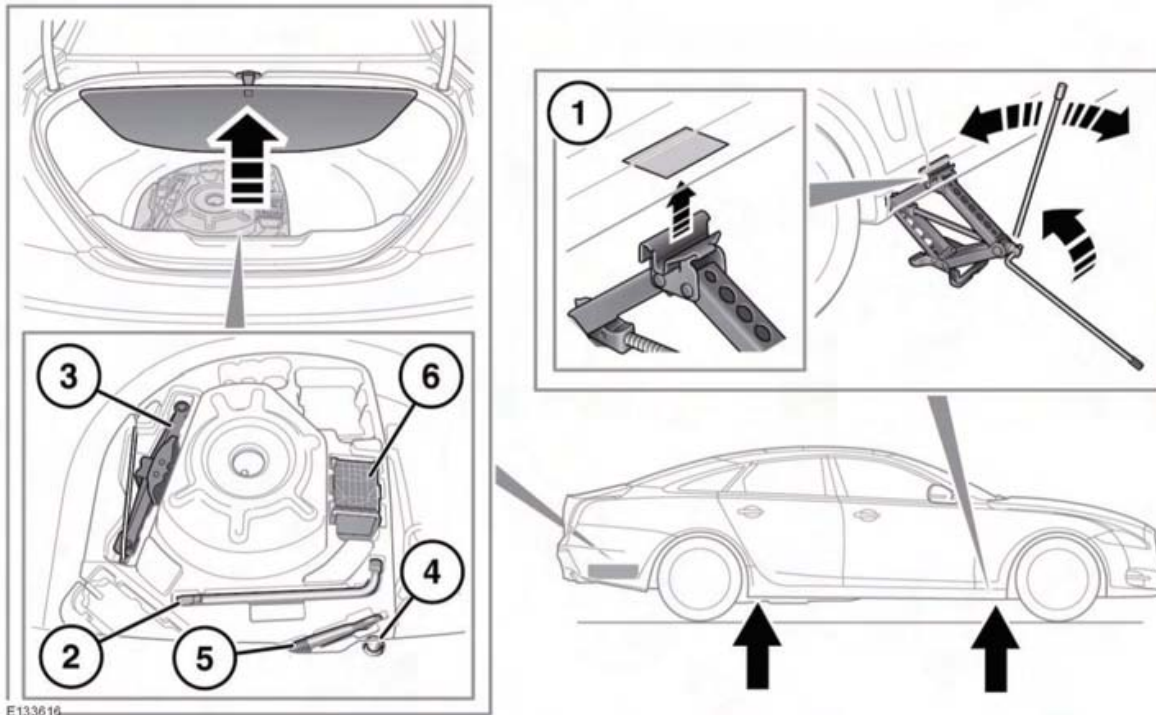


Wheel changing

WHEEL CHANGING



Before raising the vehicle slacken but do not remove the wheel nuts.

1. Observe the instructions printed on the jack.

There are 4 jacking points on the underside of the floor. Two indented, triangular indicators are provided on each sill cover. These indicate the location for the jack.

Carefully raise the vehicle by turning the jack handle. Stop jacking the vehicle when the tire just clears the ground. Minimum tire lift gives maximum vehicle stability.

Note: To remove the center badge use the plastic tipped end of the wheel nut wrench handle, push the center badge from its housing from the inside of the wheel.

To remove the spare wheel, unscrew and remove the bolt through the center.

Fit the spare wheel and loosely secure with the wheel nuts.

Lower the vehicle and then tighten the wheel nuts. See **195, TIGHTENING THE WHEEL NUTS.**

2. Wheel brace.
3. Jack.
4. Locking wheel nut adaptor.
5. Towing eye.
6. Wheel chock.

TEMPORARY USE SPARE WHEEL

Observe the following warnings before using the wheel:

⚠ WARNING

When a temporary use spare wheel is fitted, drive with caution and replace with the specified wheel and tire as soon as possible.

Do not fit more than one temporary use spare wheel and tire assembly to the vehicle at any one time.

⚠ WARNING

The temporary use spare wheel must be inflated to 60 psi (4.2 bar, 420 kPa) and cannot be repaired.

⚠ WARNING

Temporary use spare wheel, maximum speed is 80 mph (50 km/h).

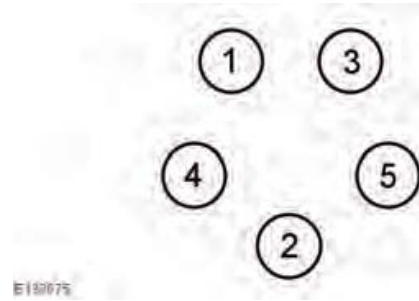
⚠ WARNING

DSC must be on when the temporary use spare wheel is in use.

LOCKING WHEEL NUTS

Note: A code number is stamped on the side of the locking nut. Ensure the number is recorded on the Security Card supplied with the literature pack. Quote this number if a replacement is required. Do not keep the Security Card in the vehicle.

TIGHTENING THE WHEEL NUTS



Using the wheel nut wrench, lightly tighten the wheel nuts alternately using the sequence shown in the illustration.

Lower the jack and tighten the wheel nuts alternately. Do not overtighten by using foot pressure or extension bars on the wheel nut wrench.

At the earliest opportunity have the wheel nuts tightened with a torque wrench to 92 lb.ft (125 Nm).

This torque must not be exceeded.