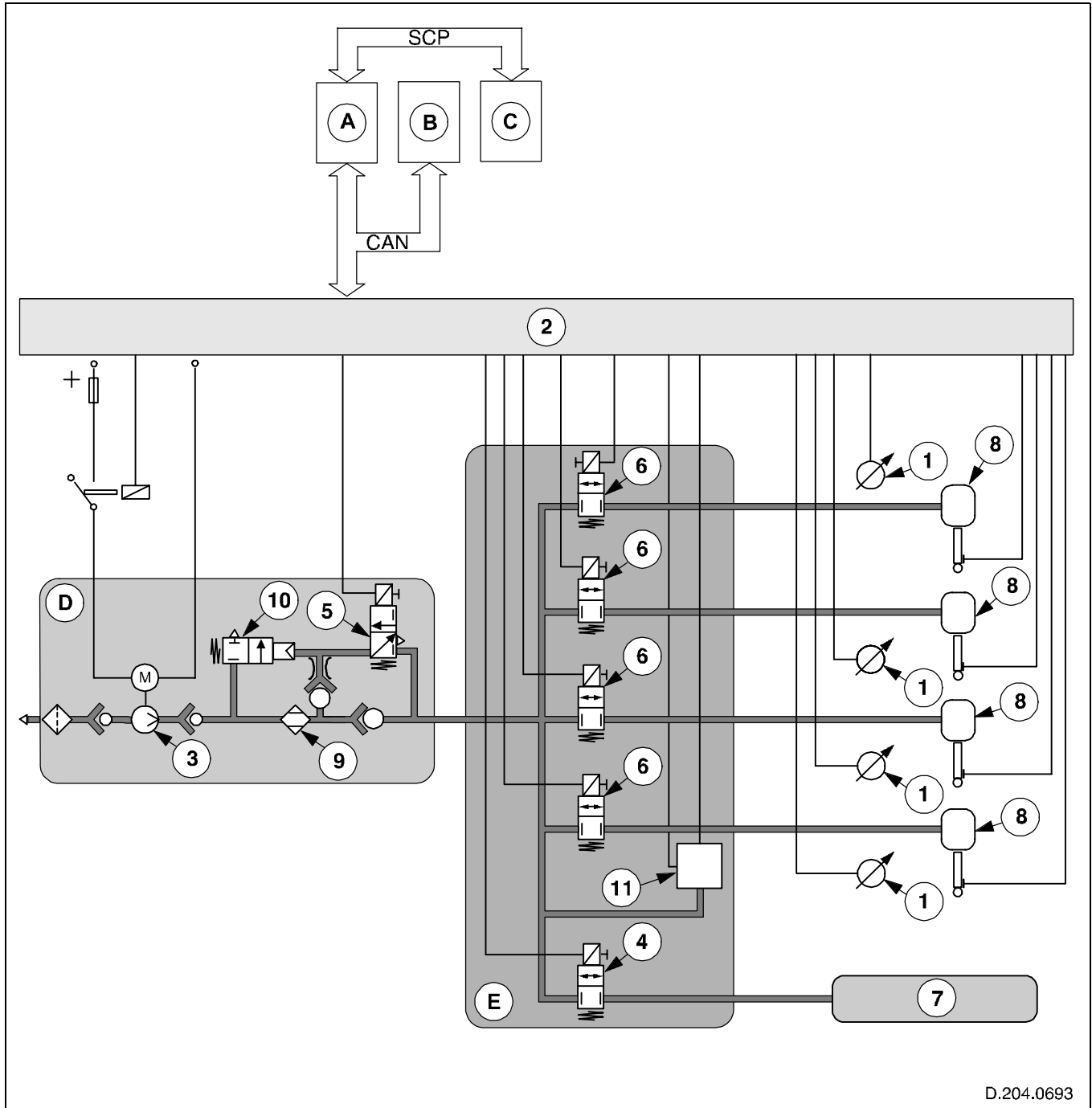


System Operation

This subsection discusses the base operation of the air suspension system and should be read in conjunction with the subsection **Operating Modes and Strategies**.



D.204.0693

Fig. 9 System diagram

Key to Fig. 9

- A. Instrument cluster - provides signals of vehicle system status
- B. ABS module - provides vehicle speed signals
- C. REM - provides trailer tow, brake switch on/off status and system switch power (SSP) signals
- D. Air compressor unit
- E. Valve block
- 1. Height sensors
- 2. Air suspension module (ASM)
- 3. Air compressor motor
- 4. Reservoir solenoid
- 5. Vent solenoid
- 6. Air spring solenoid valves
- 7. Reservoir
- 8. Air springs
- 9. Air drier
- 10. Relay valve
- 11. Pressure sensor