

CarDAQ-Plus



J2534 Reprogramming is becoming an important tool for independent repair shops to service modern vehicles.

CarDAQ-Plus is a fully featured vehicle communications interface that is capable of reprogramming any J2534 compliant automobile from any automaker on the planet. CarDAQ-Plus builds on the previous success of the CarDAQ2534, the first J2534 tool on the market. Because of Drew Tech's long history working with automotive OEM engineering groups, it's no surprise that the CarDAQ family of J2534 tools has been validated by more automakers than any other J2534 tool on the market. The CarDAQ-Plus is the only reprogramming tool you need to own.

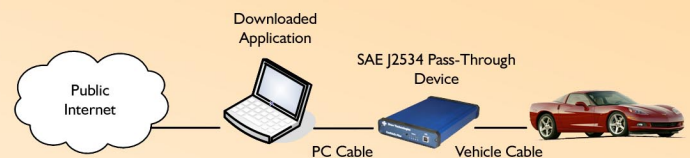
SUPPORTED REPROGRAMMING APPLICATIONS

The CarDAQ-Plus supports reprogramming of J2534-compliant vehicles from the following OEM automakers:

- Acura
- Audi
- BMW
- Buick
- Cadillac
- Chevrolet
- Chrysler
- Daewoo
- Dodge
- Ford
- GM
- GEO
- Honda
- Infiniti
- Isuzu
- Jaguar
- Jeep
- Land Rover
- Lexus
- Lincoln
- Mazda
- Mercedes
- Mercury
- Mitsubishi
- Nissan
- Oldsmobile
- Pontiac
- Porsche
- Saturn
- Scion
- Toyota
- Volkswagen
- Volvo

SCAN TOOL SOFTWARE

Scan tool software upgrades are available for customers who would like to perform OBD2 diagnostics with the CarDAQ-Plus. The software allows viewing, charting, logging, and play-back of diagnostic data in real time. The software works on any 1996 and newer domestic or import OBD2-compliant vehicle. More information about Scan tool applications is on the back side of this spec sheet.



TECHNICAL FEATURES

- CarDAQ-Plus is the only J2534 interface on the market to offer USB, wired Ethernet, and optional 802.11 WiFi connections.
- CarDAQ-Plus features a 200MHz processor and embedded Linux for higher performance.
- CarDAQ-Plus has six configurable analog inputs and expansion capabilities through two onboard CompactFlash slots.
- CarDAQ-Plus has an extruded aluminum enclosure and rugged design built to withstand the toughest environments.
- CarDAQ-Plus has support for automotive protocols beyond J2534-1 to accommodate the future.

BUS PROTOCOLS

- CAN / ISO15765 / GMLAN
- 2nd CAN (Dual or Single-Wire)
- Ford SCP (J1850PWM)
- Class 2 (J1850VPW)
- KWP2000 (ISO9141 / 14230)
- Chrysler SCI (J2610)

PC CONNECTIVITY

- Plug and Play USB 2.0
- RJ-45 wired Ethernet
- 802.11b wireless (optional)
- Shared networking capable

CarDAQ-Plus Diagnostics Applications



Drew Tech has worked in-house and with 3rd party developers to offer a wide range of software solutions for different jobs.

The CarDAQ-Plus and all other Drew Tech J2534 tools are compatible with these PC applications. To find out more information, visit our website at www.drewtech.com or call (810) 231-3171.

EDGE ANALYSIS

Edge software requires very little setup and includes real-time displays, analysis graphs with overlays and instant reports. With Edge software, you do not need to export your data to Excel or Word.

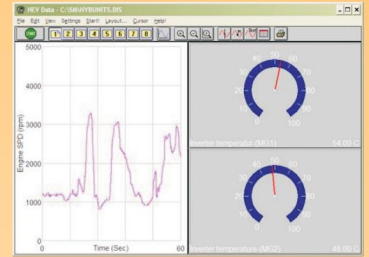
- Log in-vehicle network and OBD2 data fast
- Real time analysis
- Graphical analysis
- Instant reports



DAWN

Dawn is an integrated solution that includes data acquisition, analysis, display, storage, and retrieval. Dawn will allow you to simultaneously acquire data from in-vehicle networks and sensors.

- Heavy duty truck support
- Integrated solution for development and engineering
- Training available



PCMSCAN

PCMScan offers OBD2 diagnostics, generic scan tool features, and real-time acquisition with configurable gauges, graphs, and reports.

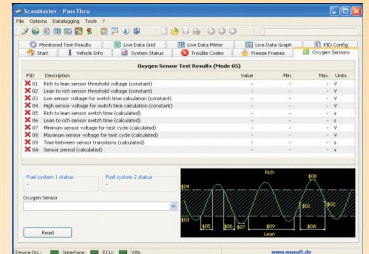
- Configurable virtual dashboard
- Data logging, playback and recording
- Trouble codes and monitor tests



SCAN MASTER

Scan Master is a diagnostics and generic scan tool application for all OBD2 vehicles with a focus on European models.

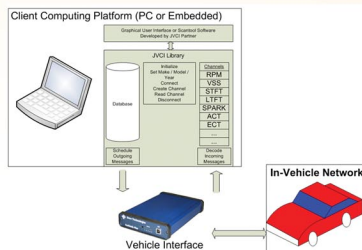
- Diagnostics modes 1-7
- Live data grid, meter, and graph
- Configurable customer reports



JVCI

JVCI is a licensable API and Library designed to help 3rd party developers easily get both generic and enhanced data without needing to know how to communicate with the ECU or identify parameters.

- Enhanced data library
- Simplified programmer's API
- Easy integration into existing applications



DIAGRA

DiagRA MCD combines measurement, calibration, and diagnostics in an integrated package. Supports CCP, MCD-2, ODX, CANdb, MDF, and DCM standards. Includes advanced developer functionalities.

- Mobile and easy to use
- Simple license model with low entrance
- Flash programming support

