

C1095 Pump Motor Resistance Fault Repair  
Teves Mark IV ABS Module  
[with or without Traction Control]

Fitted to '95-'97 XJ6 Sedan and '95-'96 XJS



Two pass-thru tubes have washers triple staked. These stakes must be gently drilled with 5/16" drill, just enough to release the washers; retain washers.



*Ate*  
Controller JAGUAR  
LNA 2210-AA TE 1016  
ANTI SKID CONTROLLER  
10.0945-0402.3 3X3894  
\*F4U4I26A95\* MADE IN PHILIPPINES

>PBT-CEK<



One corner of cover has tab that will be cut through during cutting for removal.





Washers  
removed and  
retained



**Ate**   
**Controller JAGUAR**

LNA 2210-AA TE 1016  
ANTI SKID CONTROLLER  
10.0945-0402.3 3X3894



\*F4U4I26A95\*      MADE IN PHILIPPINES



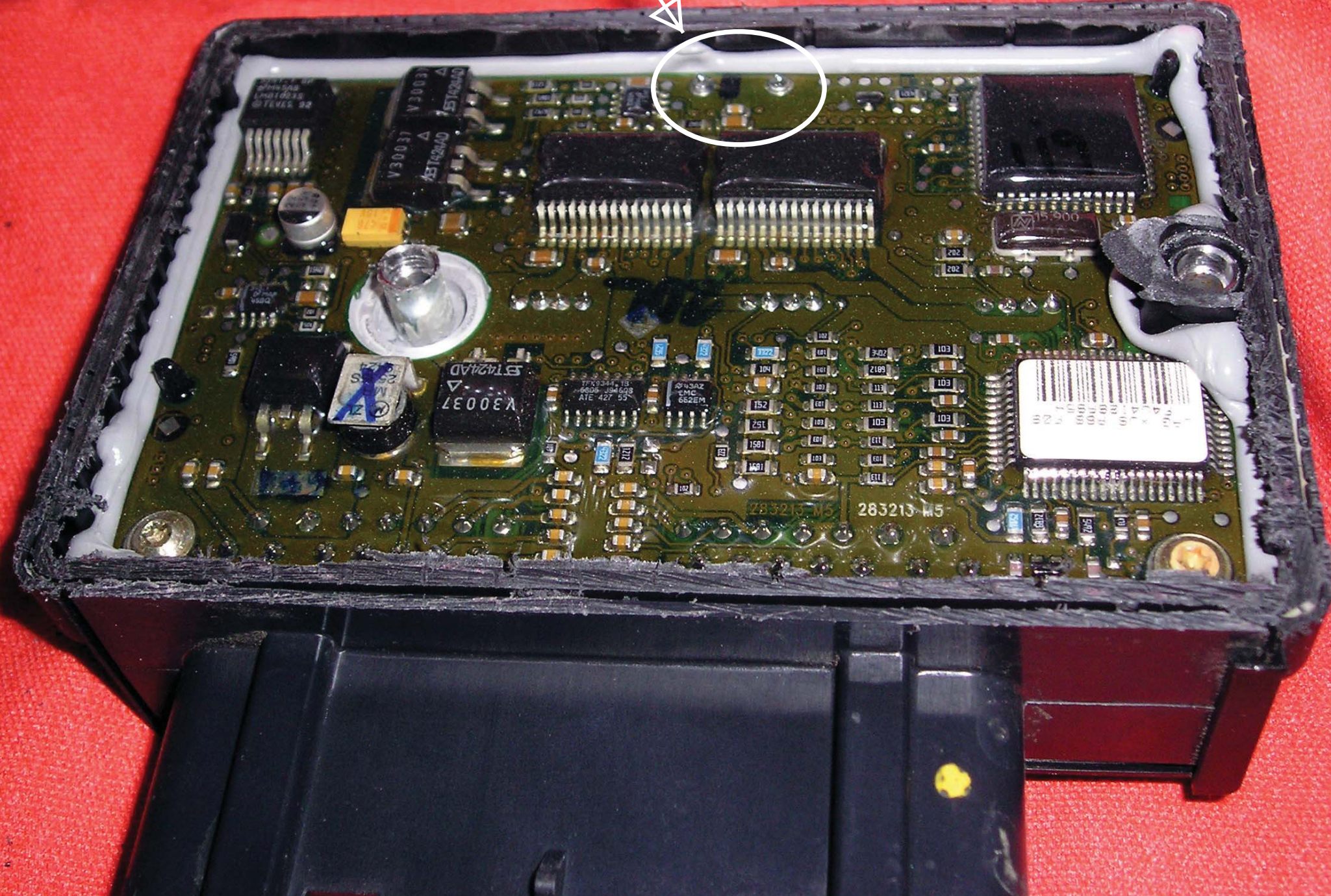
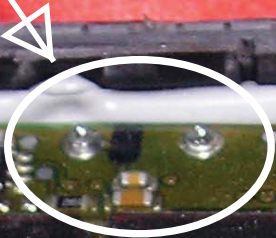


Lots of material to clean up after cutting cover away. Blow gently with compressed air. Outer edges of base and cover should be smoothed with a small file.

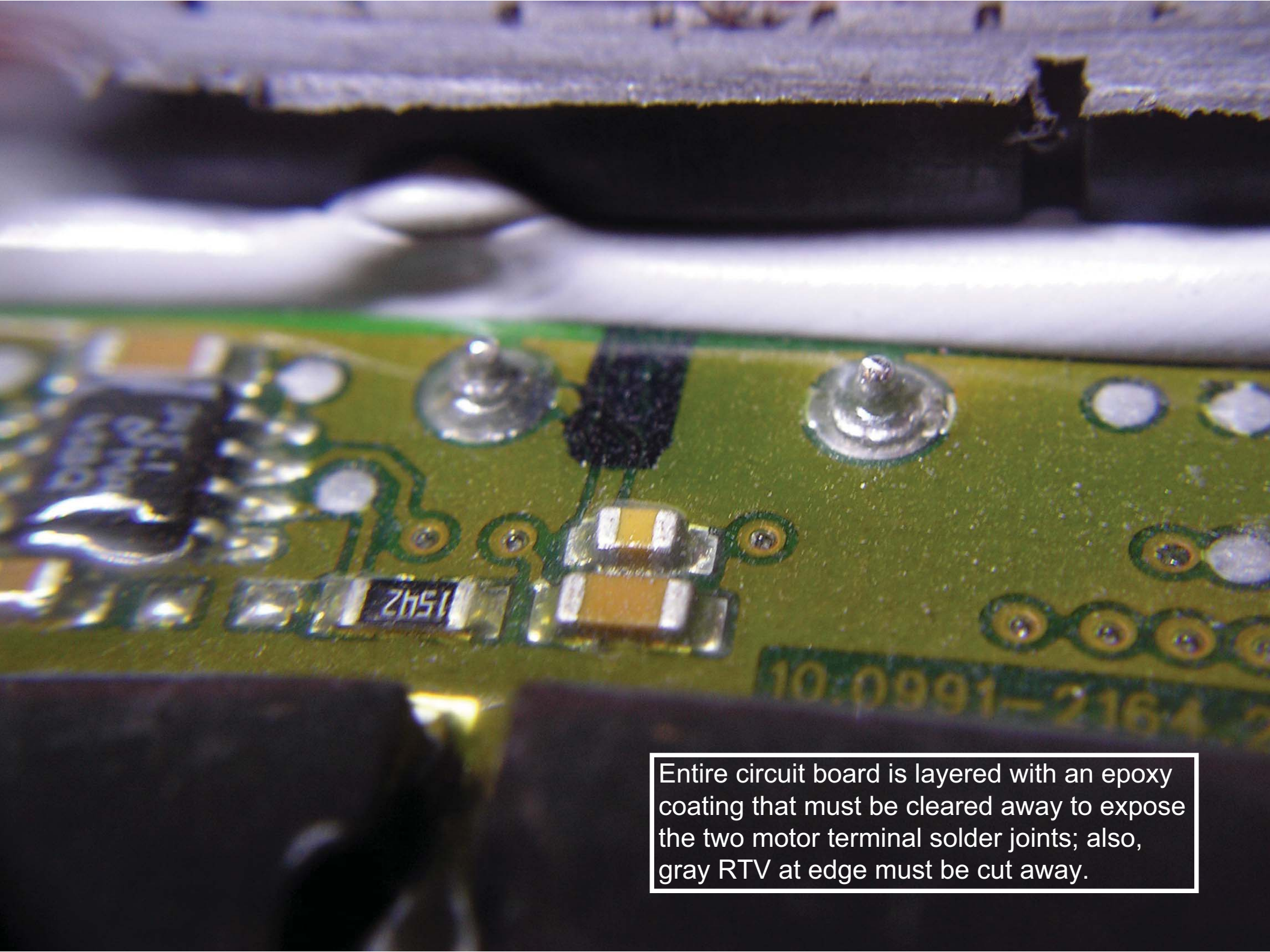




Two pump motor terminal  
solder joints to be repaired



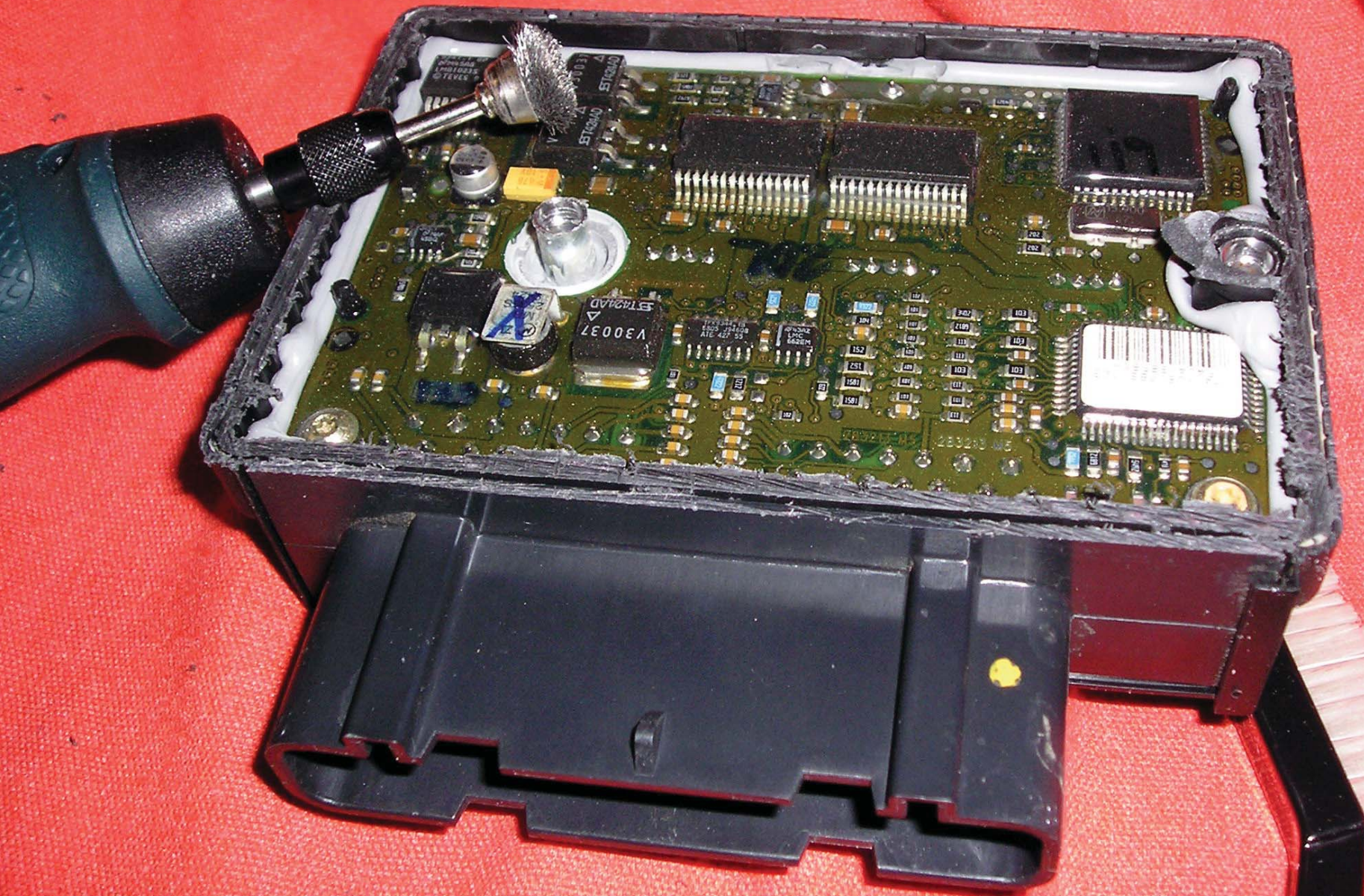




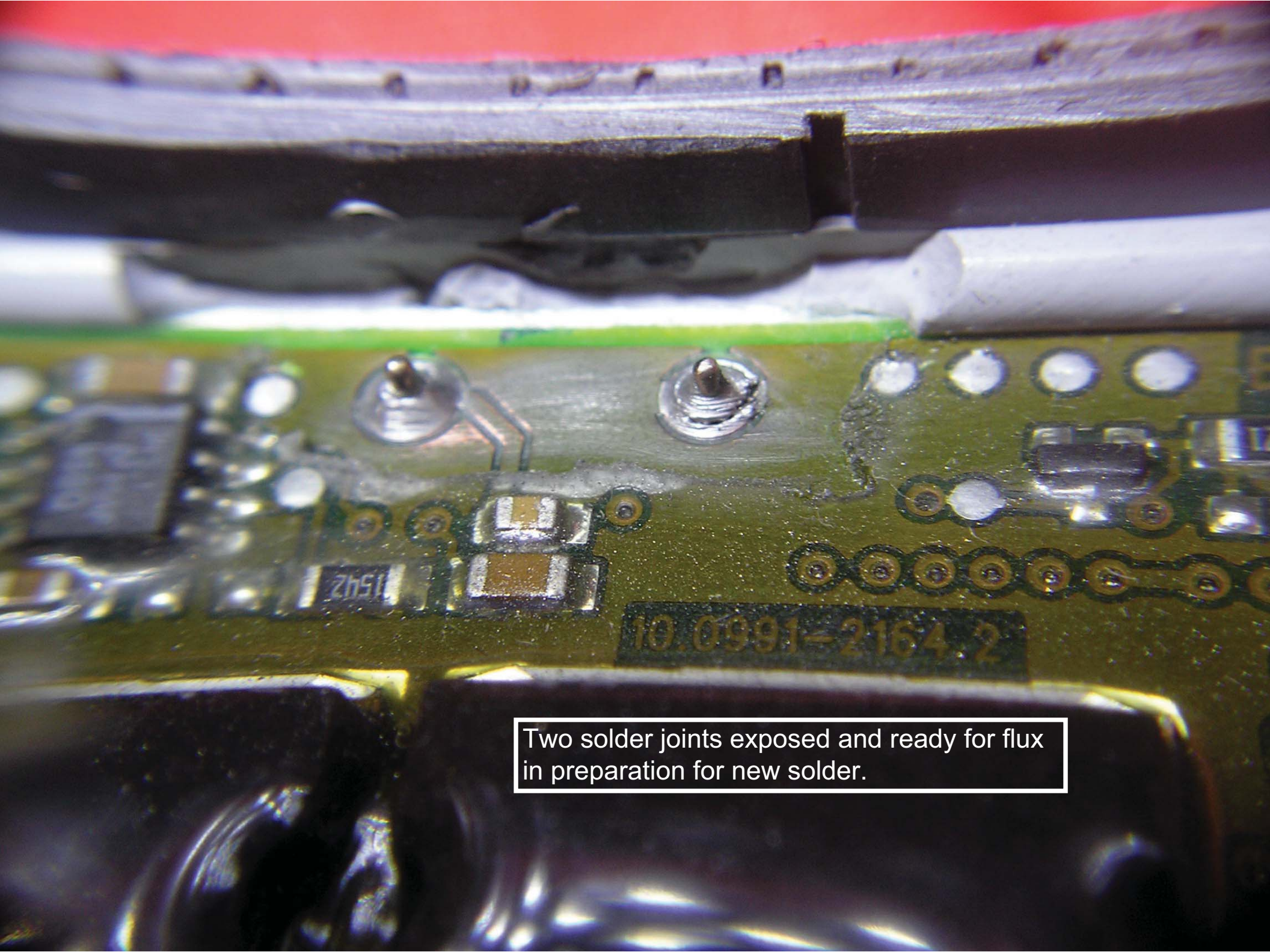
Entire circuit board is layered with an epoxy coating that must be cleared away to expose the two motor terminal solder joints; also, gray RTV at edge must be cut away.



I use a Dremel type rotary tool to remove board coating from motor terminal joints.

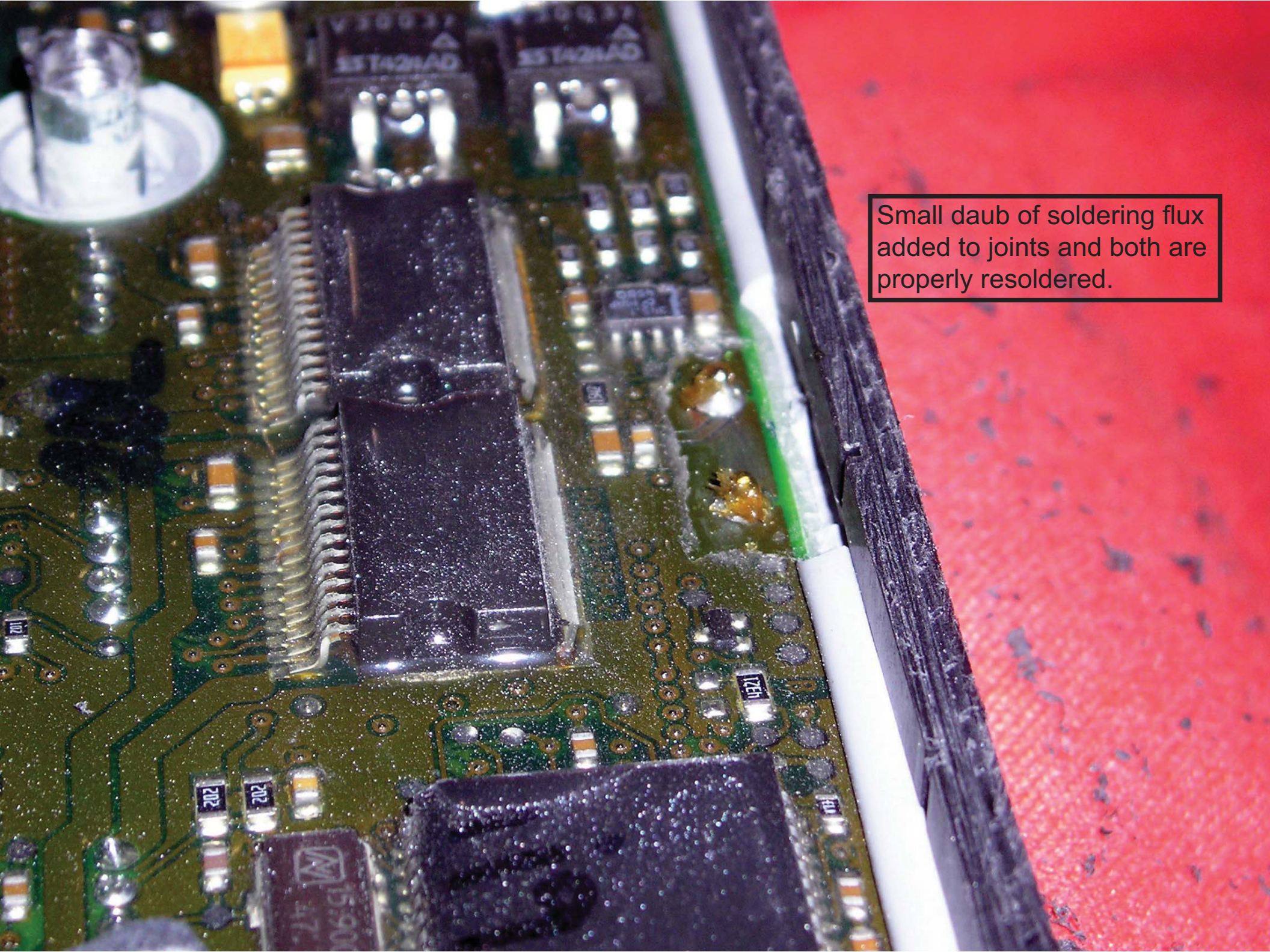






Two solder joints exposed and ready for flux in preparation for new solder.





Small daub of soldering flux added to joints and both are properly resoldered.



Apply good quality high temp  
RTV sealer to perimeter and  
around both bolt tubes







Apply cover, clamp, and smooth sealant around edges for professional finished look.



Sealant will ooze into mounting holes, reinstall retained washers, sealant will hold them. Add new washers to mounting bolts [they should fit down into recess] to spread clamping load, and just push through the sealant after it sets up.



**Ate**  
Controller **JAGUAR**  
LNA 2210-AA TE 1016  
ANTI SKID CONTROLLER  
10.0945-0402.3 3X3894  
\*F4U4I26A95\* MADE IN PHILIPPINES

>PBT-GE<