



XK8

DATE 3/98

307-05

SERVICE

## TECHNICAL BULLETIN

5 HP 24 E Transmission –  
Diagnostic FlowchartsMODEL 1997 MY-ON  
XK8 Range

VIN 001001-ON

**Issue:**

This bulletin provides a road test procedure and diagnostic flowcharts designed to assist dealer personnel in the correct diagnosis and recording of automatic transmission problems.

The flowchart headings, listing the potential customer comments, are systematically investigated in the chart, using methods based on extensive field experience.

**Action:**

**Note:** Replacement transmission units, either when stored, or about to be installed, **must** have the torque converter retaining bracket securely in place. The retaining bracket must **only** be removed immediately before installing the transmission in the vehicle. The retaining bracket is required in order to prevent any excessive loading on the torque converter bearing due to an unsupported converter and should be fitted to retain the displaced converter to the displaced transmission, for return.

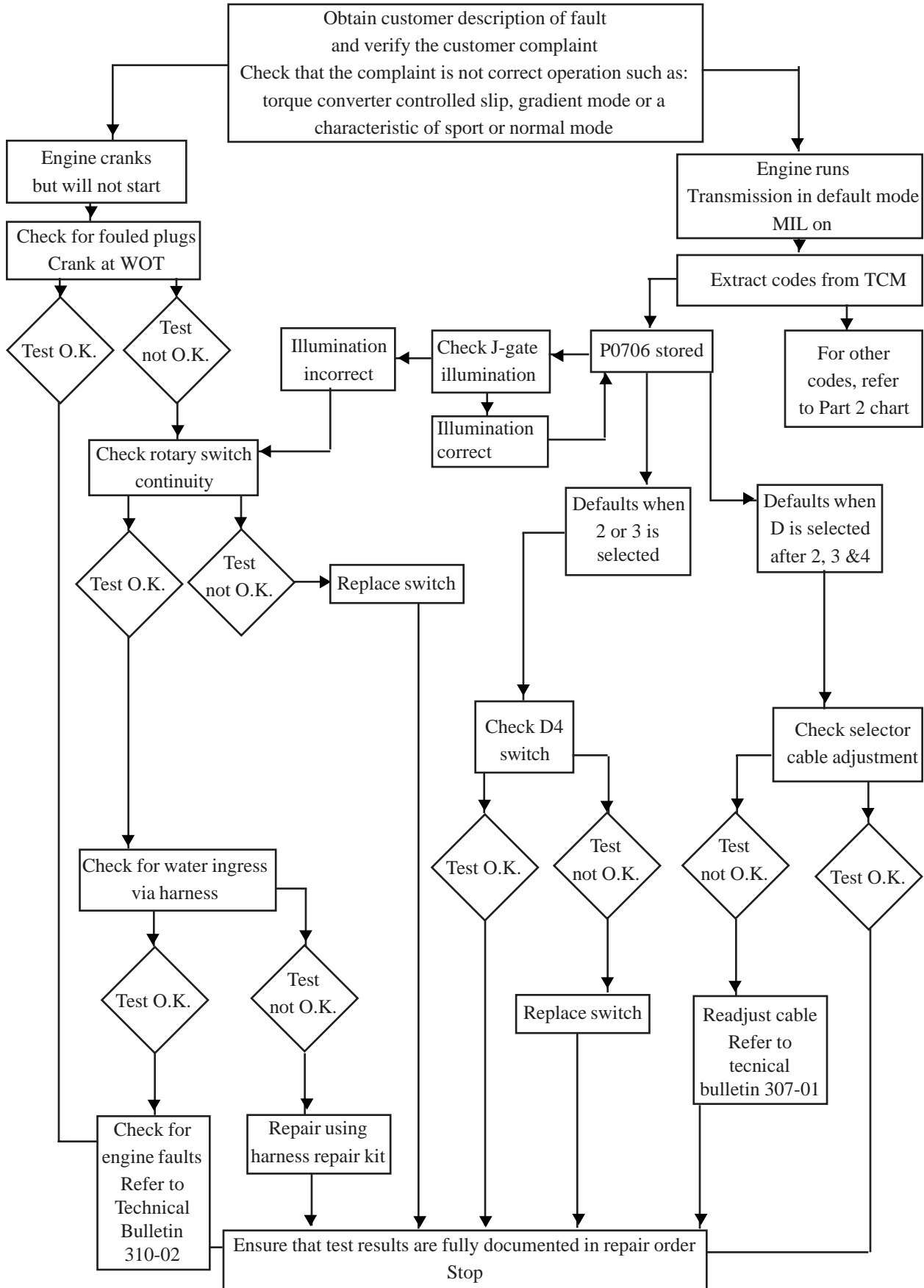
- A. The presence of large quantities of water in the transmission fluid can be detected by placing a sample in a clear container and allowing 30 minutes for any separation of the fluids to occur.

If there is any water or coolant present, it will settle at the bottom of the container.

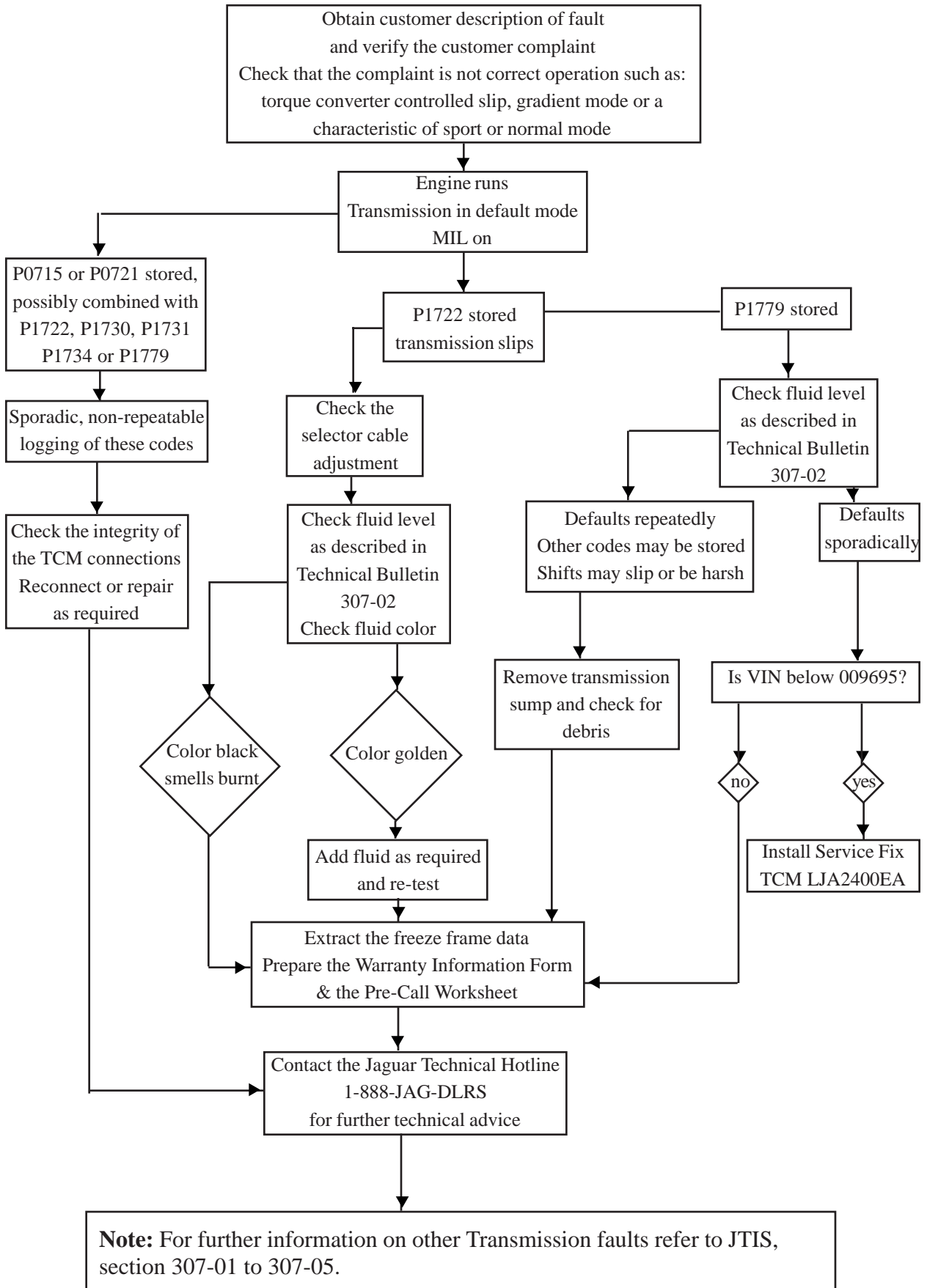
Identify whether this fluid is water, (clear), or coolant, (blue or yellow), contact the Jaguar Technical Hotline at 1 (888) JAG-DLRS.

- B. When diagnosing a complaint of harsh shifts, from D to R or R to D, verify that:
1. The vehicle is stationary when the shift is made.
  2. The shift is made before depressing the accelerator pedal.
  3. The idle speed is within specification.
- C. When diagnosing a complaint of 'loss of drive,' attempt to road test the vehicle to ensure that a distinction is made between the following symptoms:
1. The vehicle performance is reduced because the transmission has defaulted to limp home mode.
  2. There is slip, but the vehicle drives.
  3. The vehicle has no drive at all.

DIAGNOSIS FLOW CHART FOR XK8 (1997 MY) TRANSMISSION - PART 1



**DIAGNOSIS FLOW CHART FOR XK8 (1997 MY) TRANSMISSION - PART 2**



**Parts Information:**

**DESCRIPTION**

Service Fix TCM (up to VIN 9695)  
Rotary switch  
Transmission before VIN 9695  
Transmission after VIN 9695  
Transmission after VIN 18108

**PART NUMBER**

LJA 2400EA  
LJA 6201AC  
NJA 4400AF/E or N  
NJA 4400AG/E or N  
NJB 4400AB/E or N

**Warranty Information:**

<b><u>FAULT CODE</u></b>	<b><u>R.O. NUMBER</u></b>	<b><u>DESCRIPTION</u></b>	<b><u>TIME ALLOWANCE</u></b>
FB ** **	44.20.01	Replace transmission	4.55 hrs.
FZ BB **	44.15.36	Replace rotary switch	0.55 hrs.
FZ BB **	44.15.36.09	Replace rotary switch w/o diagnostic time	0.25 hrs.
FX C* **	44.15.32	Replace TCM	0.55 hrs.
FX C* **	44.15.32.09	Replace TCM w/o diagnostic time	0.25 hrs.

Please refer to sections FB and FG of the Warranty Code Book for the appropriate complaint codes.