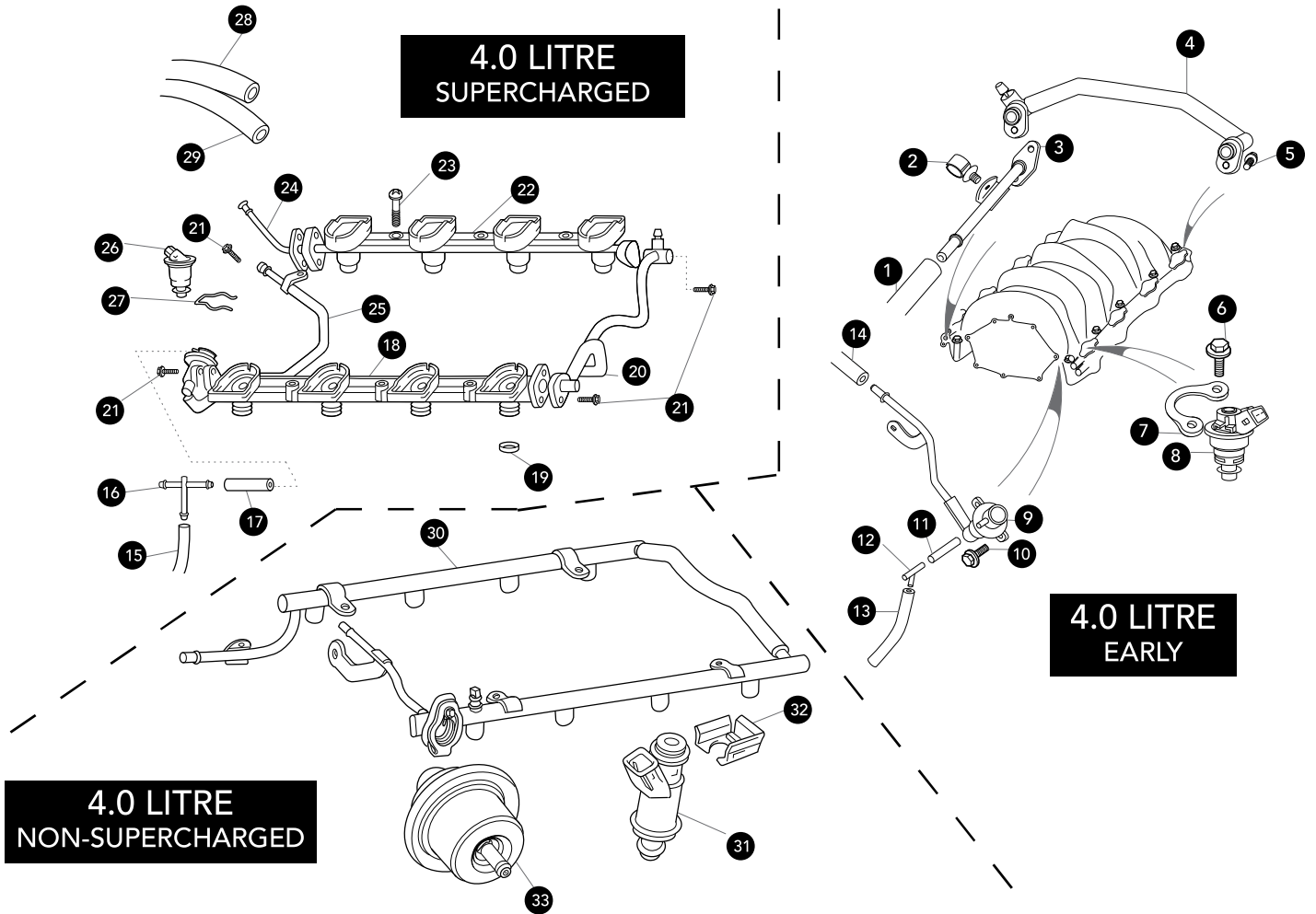


INJECTORS & PIPES



1. Fuel feed hose	NJC6053AA	1	18. Fuel rail, LH B-bank	NCC3447AD	1
2. Fir tree clip	KDF114023	1	19. Injector adaptor plate seal	NCC3016AA	8
3. Fuel feed pipe	NCA3005AF	1	20. Fuel pipe	NCC3027AB	1
4. Connecting pipe	NCA3027AF	1	21. Bolt, M6 x 16mm	JFS10616B	7
5. Bolt, M6 x 16mm	JFS10616B	6	22. Fuel rail, RH A-bank	NNE3446AA	1
6. Flange headed screw, M5 x 12mm	JFS10512C	16	23. Fuel rail to manifold screw	JXB10840B	6
7. Injector clamp plate	AJ82902	8	24. Fuel feed pipe	NCC3005AB	1
8. Fuel injector (to VIN 031302) (from VIN 031303)	LCA1521AF AJ83967	8 8	25. Fuel return pipe assembly	AJ81480	1
9. Fuel return pipe assembly	NCA3007CA	1	26. Fuel injector	LCC1521AD	8
10. Bolt, M6 x 16mm	JFS10616B	6	27. Fuel injector clip	AJ81060	8
11. Vacuum hose, 38mm	AJ83877	1	28. Fuel feed hose	NJC6053AA	1
12. T-piece	C15644	1	29. Fuel return hose	NJB6083AA	1
13. Vacuum hose	AJ83877	1	30. Fuel rail, 4.0 Litre (from VIN 031303)	AJ83358	1
14. Fuel return hose	NJA6083AE	1	31. Fuel injector	AJ83967	8
15. Vacuum hose	AJ83877	1	32. Retaining clip	AJ82853	8
16. T-piece	C15644	1	33. Fuel pressure regulator kit	JLM21358	1
17. Vacuum hose, 38mm	AJ83877	1			