

Model: 90-91 SEDANS Date: MARCH, 1991

ISSUE:

Tibbe lock repairs must now be performed using a repair kit or replacing the lock with one of a new specification.

KEY POINTS: TIBBE LOCKS REPAIR/  
REPLACEMENT PROCEDURE

NOTE: Vehicle lock sets will no longer be supplied once existing stocks have been used.

ACTION:

The replacement and/or repair procedures for the Tibbe Lock system are divided into the following 3 sections:

- .Section A - Replacement of ignition lock and glove box locks.
- .Section B - Identification of the key code/cut sequence.
- .Section C - The repair procedure for the door and trunk locks.

SECTION A - Replacement of Ignition and Glove Box Locks:

Ignition Lock -

The ignition lock is not serviceable. If the lock has failed, install a slave lock until the coded replacement is received. If the lock has not failed but occasionally sticks, order a coded replacement and install when available.

The order for a coded ignition lock should be submitted to your Zone Parts Department as a V.O.R. request with the following information:

- .Key Code
- .Barrel Assembly JLM 1983 (replacement lock)

Glove Box Lock -

This lock is also not serviceable and must be replaced as a unit. A slave lock barrel is not available.

The order for a coded glove box lock should be submitted to your Zone Parts Department as a V.O.R. request with the following information:

- .Key Code
- .Lock BEC 1395 (replacement lock)

SECTION B - Identification of Key Cut Code:

To determine the key cut code of a Tibbe key, visually inspect the operational part of the Tibbe key. The Tibbe key has eight cuts with three different levels of cut. To define the cuts, refer to fig. 1.

Type	Numeric Value
Position A Half cut	A = 2
Position B No cut	B = 1
Position C Full cut	C = 3

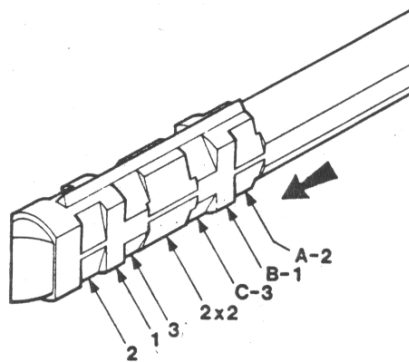


FIG. 1

When each cut type has been determined, write down its numeric value, starting from position A, reading the sequence of cuts in the direction of the arrow.

NOTE: The key number/cut code for the key in fig. 1 is 21322312.

SECTION C - Lock Repair Procedure:

The following three repair kits are available through Zone Parts Departments to repair the right and left hand front door locks and the trunk lock:

Part Number:	Description:
JLM 2040	L.H. door lock repair kit
JLM 2039	R.H. door lock repair kit
JLM 2042	Trunk lock repair kit

All lock repair kits contain a total of 12 discs, which are divided into three types (four discs per disc type). To identify each disc type, read the notch sequence located on the edge of each disc. Refer to fig. 2 for the disc to key cut relationship.

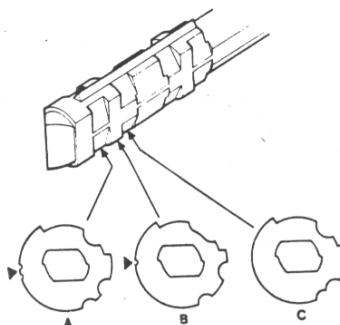


FIG. 2

DISC TYPE (FORMAT)	NOTCH SEQUENCE	CUT NO./TYPE
A	2	2
B	1	1
C	NO NOTCHES	3

This relationship is the same for all Tibbe lock assemblies. Therefore, using the key cut number shown in Fig.1, the disc relationship and the lock disc order would be as shown below for key number 21322312.

KEY CUT NO./TYPE	DISC TYPE FORMAT	NOTCH SEQUENCE
2	A	2
1	B	1
3	C	NO NOTCHES
2	A	2
2	A	2
3	C	NO NOTCHES
1	B	1
2	A	2

DOOR LOCK DISASSEMBLY:

- .Remove the faulty door handle assembly from the vehicle door.
- .Remove 'C' clip, (fig. 3 A).
- .Remove plastic actuation arm, return spring and spacer washer, (fig. 3 B, C, & D).
- .Remove the circlip which retains the lock barrel into its housing, (Fig. 3 E).

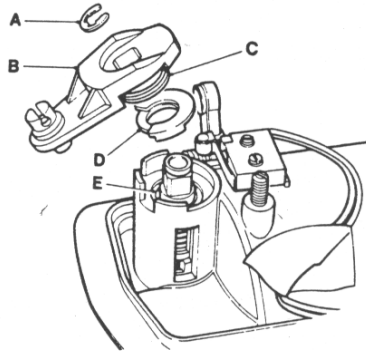


FIG. 3

- .Hold handle as in fig. 4 and carefully extract the lock barrel assembly and steel roller (fig. 4 A) from its housing.
- .Remove the shutter assembly, (fig. 4 B).

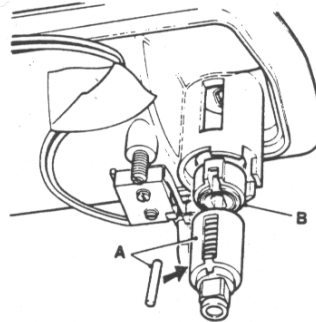


FIG. 4

The lock barrel should be kept assembled so that it can be used as a checking reference when assembling the replacement kit.

**DOOR LOCK ASSEMBLY:**

- .Select new discs and spacers from the kit and arrange them in order according to the key cut sequence.
- .Assemble discs and spacers into the new lock barrel supplied with the kit (Fig. 5). As each disc/spacer is installed, apply a small amount of grease (supplied in the kit) to the face of the discs/spacers.
- .The single spring spacer should be installed between the last two discs installed in the lock barrel, (fig. 5 C).
- .Align discs and spacers so that the steel roller fits into the lock barrel, (fig. 5 A and B).
- .Lubricate and install new shutter assembly into the lock barrel. Lubricate and install the steel roller into the lock barrel, (fig. 5 A). Install the lock barrel assembly into the lock housing.
- .Install the lock barrel retention circlip. Reassemble the lock using new parts which are supplied in the kit.

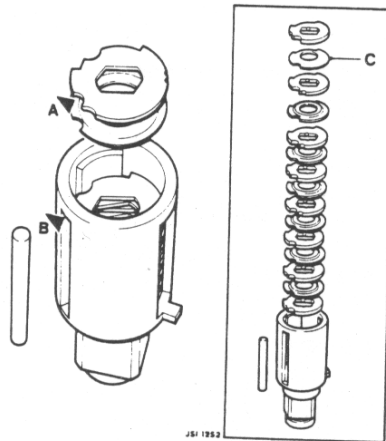


FIG. 5

.Check that the disc assembly is correct by viewing the disc assembly at the position indicated in fig. 6.

NOTE: This check can also be used to identify the key/cut code on all sedan range vehicles incorporating Tibbe locks.

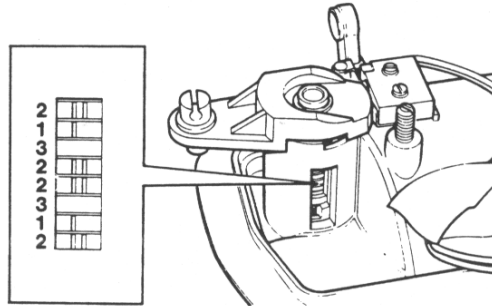


FIG. 6

.Test the lock operation using the key. Install the door lock handle into the door and test the door lock function.

REPAIRING/REPLACING TRUNK LOCK:

.Remove the trunk lock barrel assembly from its housing (refer to the 4.0 Sedan Range Service Manual, repair procedure 76.19.19). If the fault is not due to the locking pin/spring locator, discard the lock barrel.

NEW LOCK BARREL ASSEMBLY:

.Using kit JLM 2042, arrange discs and spacers in key code order, (Fig. 5).

.Install plastic seal onto lock barrel, (Fig. 7 A).

.Assemble disc and spacer washers into the lock barrel in key cut order. Apply a small small amount of grease to each disc/spacer face. Align the steel roller with slots, (Fig. 7).

NOTE: Use only the grease supplied with the kit.

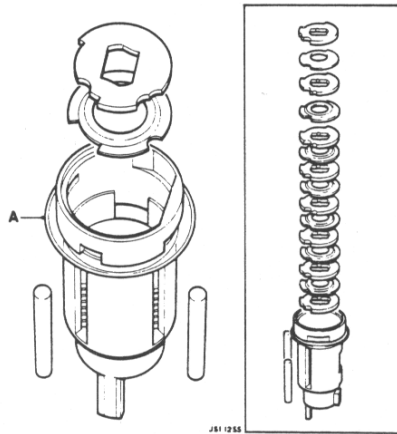


FIG. 7

- .Install shutter housing into the lock barrel and in retaining key, (Fig. 8 A).
- .Install pivot pin and spring into the shutter housing while tensioning the the spring, (Fig. 8 C).
- .Position the shutter flap (Fig. 8 D) into the shutter housing. Install the closing plate, (Fig. 8 E).
- .Insert plastic tension ring (Fig. 8 F) into the lock barrel retaining cover. Install cover (Fig. 8 G) over the lock barrel.
- .Hold the lock barrel on a block of wood. Using a flat end punch and a hammer, drive the edge of the cover into the three slots in the lock barrel rim, (Fig. 9).

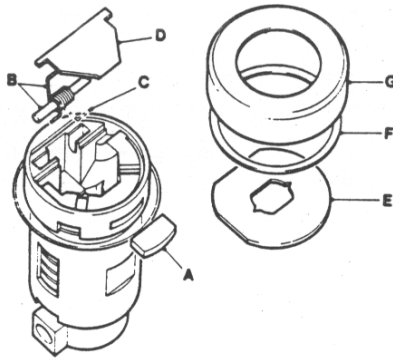


FIG. 8

- .Using the key, align disc and spacer washers.
- .Apply grease to the steel roller and install into the lock barrel, (Fig. 7).
- .Apply grease to the detent plunger and spring and install into lock barrel, (Fig. 10 A).

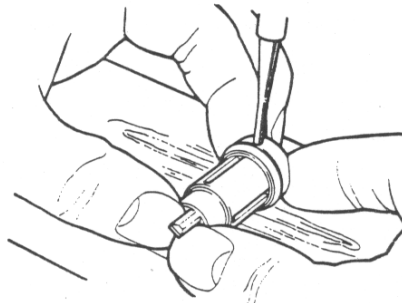


FIG. 9



.Lubricate and install the steel spring clip into the lock barrel housing, (Fig. 10 B).

.Align and install the lock barrel into the lock barrel housing. To perform this, it is necessary to align the detent plunger with the slot and pushing until the plunger engages into the rear of the housing, (Fig. 10 C).

.Using the trunk key, ensure the lock operates properly.

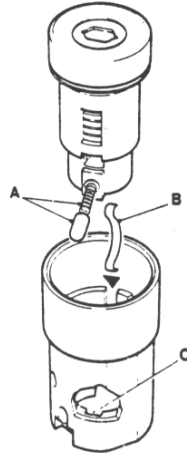


FIG. 10

WARRANTY INFORMATION:

Front Doors (XJ6/Sovereign):

Fault Code: R.H. door - 8BGN  
L.H. door - 8EGN

Repair Operation Number: 76.92.01  
Time Allowance: 0.95 hrs.

Front Doors (VDP/MAJ):

Fault Code: R.H. door - 8BGN  
L.H. door - 8EGN

Repair Operation Number: 76.92.01/50  
Time Allowance: 1.00 hrs.

Trunk Lock Barrel Repair:

Fault Code: 9DKN  
Repair Operation Number: 76.92.02  
Time Allowance: 0.55 hrs.

Ignition Lock Repair:

Fault Code: 8XY  
Repair Operation Number: 57.40.29  
Time Allowance: 0.10 hrs.

Glove Box Lock Repair:

Fault Code: 8XM  
Repair Operation Number: 76.52.08  
Time Allowance: 0.15 hrs.

PARTS INFORMATION:

Tibbe Front Door Lock Repair Kits:

Part Number:	Description:
JLM 2039	R.H. door lock repair kit
JLM 2040	L.H. door lock repair kit

Kit Contents:

ITEM NUMBER	DESCRIPTION	QUANTITY
1	BARREL (LH/RH)	1
2	SPACER (SPRING)	1
3	SPACER	6
4	DISC 1	4
5	DISC 2	4
6	DISC 3	4
7	STEEL ROLLER	1
8	BUSH (LINKAGE ROD RETAINER)	1
9	LEVER	1
10	LEVER RETURN SPRING	1
11	LEVER ASSEMBLY CIRCLIP	1
12	PLASTIC SPACER	1
13	CIRCLIP - BARREL RETENTION	1
14	SHUTTER ASSEMBLY	1

Tibbe Trunk Lock Repair Kit:

Part Number:

Description:

JLM 2042

Trunk Lock Repair Kit

Kit Contents:

ITEM	DESCRIPTION	QUANTITY
1	BARREL	1
2	SPRING SPACER	1
3	SPACER	6
4	DISC 1	4
5	DISC 2	4
6	DISC 3	4
7	STEEL ROLLER	2
8	PLASTIC SEAL	1
9	BARREL HOUSING	1
10	DETENT PLUNGER	1
11	DETENT PLUNGER SPRING	1
12	SHUTTER HOUSING	1
13	PIVOT PIN	1
14	SPRING	1
15	SHUTTER	1
16	SHUTTER CLOSING PLATE	1
17	RETENTION KEY	1
18	PLASTIC TENSION RING	1
19	STEEL RETAINING COVER	1