

JAGUAR

Parts Catalogue

JAGUAR XJ6 SALOON

Up to (V) 667828

Whilst every effort is made to ensure the accuracy of the particulars contained in this Manual the Manufacturing Companies will not, in any circumstances, be held liable for any inaccuracies or the consequences thereof.

© Jaguar Cars Ltd 1992

All rights reserved. No part of this publication may be reproduced, stored in a retrieval system or transmitted in any form, whether by electronic, mechanical, photocopying, recording or other means without the permission of Jaguar Cars Limited.

Replacement parts that are not of genuine Jaguar supply cannot be relied upon to be of correct specification, material, and workmanship and therefore Jaguar cannot be expected to extend warranty to vehicles which have been fitted with parts not supplied by them.

Jaguar reserves the right to make changes or improvements in the construction or specification of their products at any time.

IN ORDER TO ENSURE PROMPT AND CORRECT EXECUTION OF YOUR ORDERS, IT IS ESSENTIAL TO QUOTE:

1. The relative Unit Number, together with prefixes, suffixes and specification references where applicable.
e.g. Axle, Body, Vehicle Identification, Engine, Gearbox Numbers etc.
2. The Part Number and description (prefix and suffix letters to Part Numbers must always be quoted).
3. Always state the colour of carpets, painted items, trim items etc., using the colour code from the Vehicle Identification Number (VIN) plate and the colour combination key to identify the colour name.
4. The quantity required bearing in mind that the quantities shown are those used in the application actually illustrated. Sometimes only minimum package quantities are available. These packs may well contain more parts than are required for a single job; for details of packaged quantities, see the Service Parts List.

THE LISTING OR ILLUSTRATING OF AN ITEM DOES NOT GUARANTEE ITS AVAILABILITY.

INDEX TO INTRODUCTION SECTION

MICROFICHE PAGE REFERENCE	PAGE TITLE	REMARKS
B03	GEOGRAPHICAL GROUPINGS	Country groupings used in the parts list are referenced on this page.
B04	STANDARD ABBREVIATIONS	Standard abbreviations used in the microfiche text are referenced on this page.
B05	VEHICLE IDENTIFICATION NUMBERING SYSTEM (UP TO 2000 MODEL YEAR)	VIN Serial letters and numbers explained. VIN plate location.
B06	VEHICLE IDENTIFICATION NUMBERING SYSTEM (GLOBAL) FROM 2000 MODEL YEAR	VIN Serial letters and numbers explained. VIN plate location.
B07	Model Year VIN NUMBERS	Details of Model Year Commencing VIN Numbers
B08	MAJOR UNIT IDENTIFICATION NUMBERING SYSTEM	Location of Engine & Gearbox Serial Numbers.
B09	CONTROL MODULE LOCATIONS	Location of Control Modules.
B10	COLOUR CROSS REFERENCE	Body colour/coachline
B11	TRIM COLOUR COMBINATION CHART	Denotes trim colour ranges applicable to specific areas of the vehicle interior.
B12	TRIM COLOUR COMBINATION CHART	Denotes trim colour ranges applicable to specific areas of the vehicle interior.
B13	TRIM COLOUR COMBINATION CODES	Denotes trim colour code
B14-18	HOW TO USE THE PARTS MICROFICHE	Details of microfiche layout and content. Methods of use explained

STANDARD ABBREVIATIONS

ABBREVIATIONS: Standard abbreviations are used in this parts list, as shown below:

AR	As required	(B)	Body number
cm	Centimetre	COB	Clear over base paint technology
dia	Diameter	(E)	Engine number
(G)	Gearbox number	HC	High compression
i/d	Inside diameter	kph	Kilometres per hour
LC	Low compression	LH	Left-hand
LHD	Left-hand drive	LP	Low pressure
LWB	Long wheel base (Majestic)	m	metres
mm	millimetres	mph	Miles per hour
NLA	No longer available from Jaguar Cars Limited	No.	Number
NSS	Not supplied separately	NSP	Non-serviceable part
o/d	Outside diameter	O/S	Oversize
pr	Pair	psi	Pounds square/inch
RH	Right-hand	RHD	Right-hand drive
ST	Self tapping		
STD	Standard		
U/S	Undersize		
(V)	Vehicles Identification number (VIN)		

PART NUMBER SUFFIX LETTERS

E	Exchange scheme/remanufactured units
N	New condition (i.e. not exchange)
R	Remanufactured unit

GEOGRAPHICAL GROUPINGS

Where appropriate, applications for individual Markets are detailed as "Remarks" adjacent to specific Part Numbers. For convenience, Markets are sometimes categorised into geographical groups. "Exceptions/exclusions" from these geographical groups are detailed as footnotes on the appropriate page. Where the vehicle specification clearly excludes a feature from application to your market, the exclusion note may be omitted.

Definitions of the geographical groups used in this catalogue are as follows:

AUSTRALASIA: Australia, New Zealand.

CARIBBEAN: Bahamas, Panama.

EASTERN EUROPE: Bulgaria, Czechoslovakia, Hungary, Poland, Russia.

EEC: Austria, Belgium, Denmark, Eire, Finland, France, Germany, Greece, Italy, Luxembourg, Netherlands, Portugal, Spain, Sweden.

EUROPE: Austria, Belgium, Canary Islands, Denmark, Eire, Finland, France, Germany, Gibraltar, Greece, Italy, Luxembourg, Malta, Netherlands, Norway, Portugal, Slovenia, Spain, Sweden, Switzerland, UK.

FAR EAST: China, Hong Kong, Indonesia, Korea, Malaysia, Philippines, Singapore, Sri Lanka, Thailand, Vietnam.

MEDITERRANEAN: Cyprus, Egypt, Israel, Jordan, Lebanon, Morocco, Syria, Turkey.

MIDDLE EAST: Abu Dhabi, Bahrain, Dubai, Kuwait, Oman, Qatar, Saudi Arabia.

RUSSIA: Belarus, Estonia, Kazakhstan, Latvia, Lithuania, Moscow, Ukraine, Uzbekistan.

SOUTH AMERICA: Argentina, Chile, Paraguay.

VEHICLE IDENTIFICATION NUMBERING SYSTEM

The Vehicle Identification Number comprises of a series of letters and numbers representing, in code such information as Marque, Model Range, Class, Engine type etc. The code for the Jaguar 2.9, 3.2, 3.6 and 4.0 litre range is as follows.

Prefix 1 to 4

World Manufacturing Identifier

SAJJ = Jaguar

SAJD = Daimler

Prefix 5

Model Range Trim

F = XJ6

H = Sovereign

K = VDP

M = Special Edition

Prefix 6

Class

A = Base Line

C = Sovereign

F = Japanese Sovereign

G = Japanese VDP

J = Japanese Spec.

L = Canadian Spec.

N = Canadian VDP

R = VDP/Daimler

V = USA Spec.

Y = USA VDP

Prefix 7

Body Type

L = 4 Door Saloon

A/B2 = Full drivers passenger and side airbags

Prefix 8

Engine Variant

D = 4.0 Litre

G = 3.2 Litre

H = 3.6 Litre

J = 2.9 Litre

Prefix 9

Transmission Steering

3 = Auto RHS

4 = Auto LHS

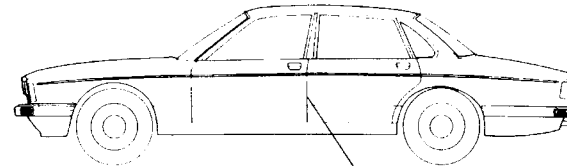
7 = Manual RHS

8 = Manual LHS

Prefix 10

Model or Year Change

A = Series 1



VIN PLATE MOUNTED ON
NEAR SIDE B.C. POST

Prefix 11

Emission Control System

A = UK, Europe, ROW High CR Non Catalyst - 2.9/3.6/4.0

B = UK, ROW, Std. CR - 2.9/3.6

C = Middle East - 2.9/3.6/4.0, Taiwan - 4.0

D = UK, Europe - Catalyst without Evap. Loss - 2.9

E = Canada - 3.6 - Up to 1988

F = Australia - 3.6

G = Australia, Germany, Switzerland - 3.6 - Up to 1988

H = Canada, Japan, Sweden, USA - 3.6 - Up to 1988

J = Europe, ROW - Catalyst with Evap. Loss - 4.0

Korea - Catalyst with Evap. Loss - 4.0

Japan - 3.2/3.6/4.0

Canada - 3.6/4.0

Australia - 3.2

USA - 3.6 - 1989

K = UK, Europe, ROW - Non Evap. Loss - 3.2

UK, Europe - Catalyst without Evap. Loss - 3.6/4.0

Japan, Sweden - 2.9

S = USA - Passive Belts - 4.0

T = Australia - 4.0

Prefix 12 to 17

Serial Number

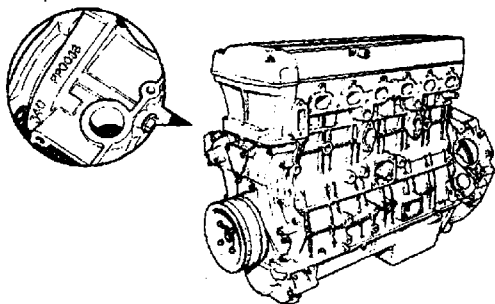
500001 on

Model Year VIN Numbers

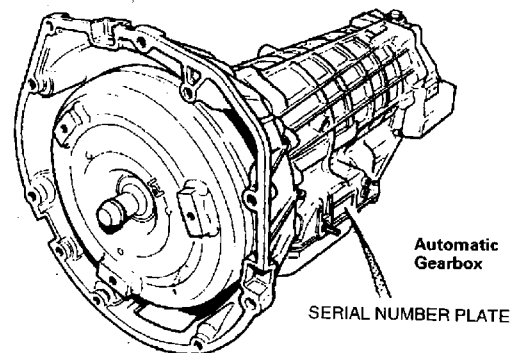
1987 MY From (V) 500515 to 524374
1988 MY From (V) 524375 to 556850
1989 MY From (V) 556851 to 594575
1990 MY From (V) 594576 to 629285
1991 MY From (V) 629286 to 649174
1992 MY From (V) 649175 to 667828

ENGINE IDENTIFICATION

An engine numbering system comprising 12 characters will be applied to the XJ6 variants. Detailed below is a sample number with all the applicable codes that are to be used.



GEARBOX SERIAL No. LOCATIONS



9 D P A M A 1 0 0 0 0 1

Marque
9-Jaguar

ENGINE TYPE
A=2.9L 2v
D=3.6L 4v
E=4.0L 4v
B=3.2L 4v

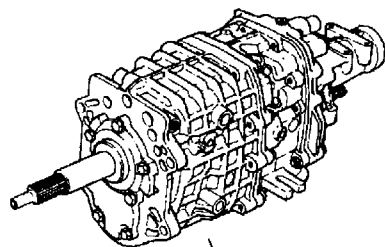
FUEL
P=Petrol

COMPRESSION RATIO
A=3.6L 4v HC
B=3.6L 4v SC
C=4.0L
T=2.9L 2v HC
V=2.9L 2v SC
M=3.2L

SPEC RANGE
E=1987 MY

EMISSION SPEC
L=USA/Japan/Sweden/Austria/Germany/ Switzerland
M=European
N=
P=Australia/Middle East
R=Canadian
S=ROW

SERIAL NUMBER



SERIAL NUMBER STAMPING

Automatic
Gearbox

SERIAL NUMBER PLATE

Manual
Gearbox

IP1639

**COLOUR CROSS REFERENCE - BODY / TRIM / COACHLINE
UP TO (V) 594575**

PAINT COLOUR CODE	TRIM COLOUR	BARLEY	BUCKSKIN	CHEVIOT TWEED	CHILTERN TWEED	COTSWOLD TWEED	DOESKIN	ISIS BLUE	MAGNOLIA	MULBERRY	PENNINE TWEED	SAVILE GREY	WARM CHARCOAL
	BODY COLOUR												
HES	ALPINE GREEN (M)	OYSTER	OYSTER	GUNMETAL	OYSTER	OYSTER	OYSTER	OYSTER	OYSTER	-----	GUNMETAL	GUNMETAL	GUNMETAL
JFE	ARTIC BLUE (M)	OYSTER	OYSTER	OYSTER	OYSTER	OYSTER	OYSTER	OYSTER	OYSTER	DARK RED	OYSTER	OYSTER	OYSTER
CEK	BORDEAUX RED (M)	GOLDLEAF	OYSTER	GUNMETAL	OYSTER	GOLDLEAF	OYSTER	OYSTER	OYSTER	-----	GUNMETAL	GUNMETAL	GUNMETAL
CEV	CRIMSON (M)	GOLDLEAF	OYSTER	GUNMETAL	OYSTER	GOLDLEAF	OYSTER	OYSTER	OYSTER	-----	GUNMETAL	GUNMETAL	GUNMETAL
LDP	DORCHESTER GREY (M)	GOLDLEAF	OYSTER	GUNMETAL	OYSTER	GOLDLEAF	OYSTER	GUNMETAL	OYSTER	DARK RED	GUNMETAL	GUNMETAL	GUNMETAL
NDK	GLACIER WHITE	GOLDLEAF	OYSTER	GUNMETAL	OYSTER	GOLDLEAF	OYSTER	GUNMETAL	OYSTER	DARK RED	GUNMETAL	GUNMETAL	GUNMETAL
CEH	GRENADIER RED	GOLDLEAF	OYSTER	GUNMETAL	OYSTER	GOLDLEAF	OYSTER	GUNMETAL	OYSTER	-----	GUNMETAL	GUNMETAL	GUNMETAL
HEN	JAGUAR RACING GREEN	GOLDLEAF	OYSTER	OYSTER	GUNMETAL	GOLDLEAF	OYSTER	OYSTER	OYSTER	-----	GUNMETAL	GUNMETAL	GUNMETAL
PDH	JET BLACK	GOLDLEAF	OYSTER	GUNMETAL	OYSTER	GOLDLEAF	OYSTER	GUNMETAL	OYSTER	DARK RED	GUNMETAL	GUNMETAL	GUNMETAL
HET	MOORLAND GREEN (M)	OYSTER	OYSTER	GUNMETAL	OYSTER	OYSTER	OYSTER	OYSTER	OYSTER	-----	GUNMETAL	GUNMETAL	OYSTER
AFV	SATIN BEIGE (M)	GOLDLEAF	GOLDLEAF	-----	GOLDLEAF	GOLDLEAF	GOLDLEAF	GOLDLEAF	GOLDLEAF	DARK RED	OYSTER	-----	OYSTER
MDJ	SILVER BIRCH (M)	GOLDLEAF	GOLDLEAF	-----	GOLDLEAF	GOLDLEAF	GOLDLEAF	GOLDLEAF	GOLDLEAF	DARK RED	GUNMETAL	-----	GUNMETAL
JFJ	SOLENT BLUE (M)	GOLDLEAF	OYSTER	GUNMETAL	OYSTER	GOLDLEAF	OYSTER	GUNMETAL	OYSTER	DARK RED	GUNMETAL	GUNMETAL	GUNMETAL
MDF	TALISMAN SILVER (M)	GUNMETAL	GUNMETAL	GUNMETAL	GUNMETAL	GUNMETAL	GUNMETAL	GUNMETAL	GUNMETAL	DARK RED	GUNMETAL	GUNMETAL	GUNMETAL
JEX	TUNGSTEN (M)	OYSTER	OYSTER	OYSTER	OYSTER	OYSTER	OYSTER	OYSTER	OYSTER	DARK RED	OYSTER	OYSTER	OYSTER
JFG	WESTMINSTER BLUE (M)	GOLDLEAF	OYSTER	OYSTER	OYSTER	GOLDLEAF	OYSTER	GUNMETAL	OYSTER	DARK RED	GUNMETAL	GUNMETAL	GUNMETAL

**BODY COLOUR AND COACHLINE RANGE
FROM (V) 594576**

BODY COLOUR	PAINT CODE	JBC	VIN NUMBER	COACHLINE COLOUR
ARTIC BLUE (M)	JFE	337	UP TO (V) 649174	GUNMETAL
BLACK	PDH	333		GOLDLEAF
BLACK CHERRY	PDP	737	FROM (V) 629286	GOLD
BORDEAUX RED (M)	CEK	---	UP TO (V) 649174	OYSTER
BROOKLANDS GREEN	HFB	753	FROM (V) 629286	GOLD
CATKIN	HFD	777	FROM (V) 649175	GOLD
DIAMOND BLUE (M)	JFN	743		GUNMETAL
FLAMENCO	CFH	765	FROM (V) 649175	GOLD
GLACIER WHITE	NDP	742		GUNMETAL
GRENADIER RED	CEH	---	UP TO (V) 629285	GOLDLEAF
GUNMETAL	LEH	740		OYSTER
JADE GREEN	HEV	---	UP TO (V) 649174	OYSTER
JAGUAR RACING GREEN	HEN	---	UP TO (V) 629285	GOLDLEAF
KINGFISHER BLUE	HFE	779	FROM (V) 649175	SILVER
METEOR RED	CFJ	736	FROM (V) 649175	GOLD
OYSTER (M)	SDE	751	UP TO (V) 629285	DARK BLUE
PLATINUM (M)	LFP	775	FROM (V) 649175	DARK BLUE
REGENCY RED	TDD	734		GOLDLEAF
SATIN BEIGE	AGA	747	UP TO (V) 629285	GOLDLEAF
SAVOY GREY (M)	LEK	---	UP TO (V) 649174	GOLDLEAF
SIGNAL RED	CFC	748		GOLD
SILVER (M)	MDF	---	FROM (V) 629286	GUNMETAL
SOLENT BLUE (M)	JFJ	715		OYSTER
TUNGSTEN (M)	JEX	718	UP TO (V) 649174	OYSTER
TUSCANY BRONZE	SDD	---	FROM (V) 629286	GOLD
WESTMINSTER BLUE	JFG	712		OYSTER

Up to VIN 594575 – End of 1991 MY
1990 MY INFORMATION SEE PAGE B11

TRIM COLOUR COMBINATION CHART ALL MARKETS

DIRECTIONS FOR USE

- 1 Establish the basic trim colour of the car. These are colours which appear in the Jaguar sales and advertising literature.
- 2 Select the basic trim colour in the left hand column of the chart.
- 3 Select the trim required from the description across the top of the chart.
- 4 By reading across and down the colour, the colour for the part can be obtained.

BASIC COLOUR LEATHER OR AMBLA	SEATS	CARPETS	BOOT TRIM	UPPER AREA	LOWER AREA	HEADLINING
	AW	XF	XF	XE	AW	ND
BARLEY	AW	XF	XF	XE	AW	ND
BISCUIT	AE	AP	XF	XE	AE	ND
CHARCOAL	LZ	LE	XF	XE	LZ	ND
ISIS BLUE	JF	LE	XF	XE	JF	ND
DOESKIN	XE	XF	XF	XE	XE	ND
MAGNOLIA	ZM	AP	XF	XE	ZM	ND
MULBERRY	CM	CN	XF	XE	CM	ND
SAVILE GREY	LY	XA	XF	XE	LY	ND
CLOTH						
CHEVIOT TWEED	YF	XA	XF	XE	LY	ND
CHILTERN TWEED	AY	XF	XF	XE	XE	ND
COTSWOLD TWEED	AX	XF	XF	XE	AW	ND
PENNINE TWEED	YE	LE	XF	XE	LZ	ND

TRIM DEFINITION LIST

UPPER AREA (DOESKIN ONLY)

Bezel-'A' post finisher
Bezel-Seatbelt (B/C post upper)
Cover-'A' post
Cover-B/C post upper
Cover-Cantrail
Cover-D/E post
Cover-Rear header rail
Furflex-Sunroof aperture
Grab handle
Housing-sunvisor mirror
Pivot arm & clip-sunvisor
Reading lamps-E post
Sunvisor-Leather
Surround-Interior lamp
Switch & surround-Sunroof

LOWER AREA (COLOUR KEYED)

Armrest
'B/C' post lower
'B/C' post lower fixing
Casing-side-Lower 'A' post
Casing-Underscuttle
Casing-Lower door
Centre console
Console extension (rear compartment)
Cover-High mounted stoplamp
Cover plugs-seatback
Door pockets
Door pull inserts
Fuse box cover
Fuse box cover fixings
Handbrake gaiter
Lid-Console cubby box
Parcel shelf
Seatbelt bezel-Rear parcel shelf
Seating, including head restraints

FOR TRIM CODE REFER TO TRIM COMBINATION CHARTS

NOTE: For 3 digit Suffix Equivalents SEE PAGE B09

IP1644

TRIM COLOUR COMBINATION CHART (USA:ONLY)

From (V) 594576 – 1990 MY & up to (V)629285
 From (V) 628286 – See Page B11

Basic
 Trim Colour

OVERALL INTERIOR COLOUR DESCRIPTION	SEATS, DOOR CASINGS, CENTRE CONSOLE, UNDERSCUTTLE	SEAT BELT WEBBING	FACIA & DOOR TOP ROLLS	UPPER AREA TRIM/HEADLINING ETC SUNROOF APERTURE FURFLEX	CARPET INTERIOR	DOOR APERTURE FURFLEX (DOOR WELL)
DOESKIN	DOESKIN	DOESKIN	WARM CHARCOAL	DOESKIN LIMESTONE	RATTAN	DOESKIN
MAGNOLIA	MAGNOLIA	MAGNOLIA			CHAMPAGNE	WARM CHARCOAL

USA VDP

Basic
 Trim Colour

OVERALL INTERIOR COLOUR DESCRIPTION	SEATS, DOOR CASINGS, CENTRE CONSOLE, UNDERSCUTTLE	SEAT BELT WEBBING	FACIA & DOOR TOP ROLLS	UPPER AREA TRIM/HEADLINING ETC SUNROOF APERTURE FURFLEX	CARPET INTERIOR	DOOR APERTURE FURFLEX (DOOR WELL)
BARLEY	BARLEY	BARLEY	WARM CHARCOAL	DOESKIN/LIMESTONE	RATTAN	DOESKIN
SAVILE GREY	SAVILE GREY	SAVILE GREY		SAVILE GREY	SMOKE GREY	SAVILE GREY
ISIS BLUE	ISIS BLUE	WARM CHARCOAL				SAVILE GREY
MULBERRY	MULBERRY	WARM CHARCOAL		DOESKIN/LIMESTONE	WINE RED	WARM CHARCOAL
WARM CHARCOAL	WARM CHARCOAL	WARM CHARCOAL		SAVILE GREY	SLATE GREY	WARM CHARCOAL

NOTE: All US take Warm Charcoal Facias & Top Rolls
 Colour keyed Facias will be used by Limited edition 'Specials' only, commencing at 1990 MY

TRIM COLOUR / PART NUMBER SUFFIX CROSS REFERENCE

SEATS

COLOUR	LEATHER OR AMBLA	3 LETTER SUFFIX	2 LETTER SUFFIX	VIN NUMBER
BARLEY	BOTH	AFW	AW	
BISCUIT	BOTH		AE	
BUCKSKIN	BOTH	AFR	AR	(1)
DOESKIN	BOTH	AEE	XE	
ISIS BLUE	BOTH	JEF	JF	
MAGNOLIA	BOTH	AEM	ZM	
MULBERRY	BOTH	CEM	CM	
PARCHMENT	LEATHER	HEZ		(2)
SAVILE GREY	BOTH	LDY	LY	
WARM CHARCOAL	BOTH	LEG	LZ	

CLOTH

COLOUR	3 LETTER SUFFIX	2 LETTER SUFFIX
CHEVIOT TWEED	LEF	YF
CHILTERN TWEED	AFY	AY
COTSWOLD TWEED	AFX	AX
PENNINE TWEED	LEE	YE

(1) UP TO (V) 594575 - UP TO END 1989 MY

(2) FROM (V) 594576 - 1990 MY

(3) UP TO (V) 629285

(4) FROM (V) 629286

CARPET

COLOUR	3 LETTER SUFFIX	2 LETTER SUFFIX	VIN NUMBER
CHAMPAGNE	SDB		(2)
MINK	ADP	AP	(1)
RATTAN	AEF	XF	
SLATE GREY	LDE	LE	(3)
SMOKE GREY	LEA	XA	(4)
WINE RED	CEN	CN	

FACIA / CRASH ROLL

COLOUR	3 LETTER SUFFIX	VIN NUMBER
BARLEY	AFW	(4)
MID GREY	LEM	(2)
SAGE GREEN	HFA	(2)
WARM CHARCOAL	LEG	(2)

HEADLINING

COLOUR	3 LETTER SUFFIX	2 LETTER SUFFIX	VIN NUMBER
LIMESTONE	NDD	ND	
SAVILE GREY	LDY		(2)

CONTRAST PIPING / PART NUMBER SUFFIX CROSS REFERENCE

LEATHER OR AMBLA

COLOUR	3 LETTER SUFFIX
DOESKIN / BUCKSKIN	WXE
DOESKIN / ISIS BLUE	ZXE
DOESKIN / MULBERRY	YXE
MAGNOLIA / BARLEY	MZM
MAGNOLIA / ISIS BLUE	ZZM
MAGNOLIA / MULBERRY	YZM
PARCHMENT / SAGE GREEN	UHZ
SAVILE GREY / ISIS BLUE	ZLY
SAVILE GREY / MID GREY	VLY
SAVILE GREY / MULBERRY	YLY

CARPET

COLOUR	3 LETTER SUFFIX
CHAMPAGNE / BARLEY	MSB
CHAMPAGNE / MAGNOLIA	NSB
SAGE GREEN / PARCHMENT	THA

COLOUR SUFFIX IDENTIFICATION TABLE

TRIM	'A'	'B'	'C'	'D'	'E'	'G'	'H'	'J'	'1'	'2'	'3'	'4'	'5'	'6'	'7'	'8'	'9'
BARLEY			AW	AFW	AFW	AFW		AFW	AW	AFW	AW	AW	AW		AFW	AFW	AFW
BISCUIT			AE						AE		AE	AE	AE				
BUCKSKIN			AR ²	AFR ²	AFR ²				AR ²	AFR ²	AR ²	AR	AR ²				
CHEVIOT	YF	LEF															
CHILTERN	AY	AFY															
COTSWOLD	AX	AFX															
SAGE GREEN														HFA	HFA		
DOESKIN			XE	AEE	AEE	AEE	AEE	AEE	XE	AEE	XE	XE	XE		AEE	AEE	AEE
ISIS BLUE			JF	JEF	JEF	JEF		JEF	JF	JEF	JF	JF	JF				JEF
MAGNOLIA			AEM ³	AEM ³	AEM	AEM	AEM	AEM	ZM	AEM		ZM	ZM			AEM	AEM
MID GREY														LEM	LEM		
MULBERRY			CM ⁶	CEM ⁶	CEM ⁶	CEM ⁶			CM ⁶	CEM ⁶	CM ⁶	CM ⁶	CM ⁶				CEM ⁶
PARCHMENT			HEZ ¹	HEZ ¹	HEZ ³	HEZ		HEZ	HEZ ³	HEZ	HEZ ³		HEZ ³			HEZ	HEZ
PENNINE	YE	LEE															
SAVILE GREY			LY	LDY	LDY	LDY	LDY	LDY	LY	LDY	LY	LY	LY			LDY	LDY
WARM CHARCOAL			LZ	LEG	LEG	LEG		LEG	LZ	LEG	LZ	LZ	LZ	LEG	LEG	LEG	LEG

Colour Suffix Identification Table
This table contains the Part No. suffixes for colour keyed parts. In some cases the microfiche text provides a core Part No. together with a "Dummy" suffix.

Using this table, the "Dummy" suffix can be converted into an acceptable Part Number Suffix appropriate to the colour range available. Where there are limitations of use for a specific colour, then VIN change points are denoted by the numbers after the individual suffix codes. These are referenced at the foot of the page.

Method: A) Determine the Part No. required, together with the "Dummy" suffix, from the appropriate text page in the microfiche.

B) Select the column headed by the "Dummy" suffix number/letter given with the core Part No.

C) Choose the colour suffix required in this column against the descriptions available.

D) Check with any change point information indicated.

E) Replace the "Dummy" suffix with the chosen 2 or 3 character code.

Example:

- a) Part No. from text = BEC 3942 '6'
- b) Trim colour required = Mid Grey
- c) Align Mid Grey with the code in column '6'
- d) Read suffix LEM
- e) Check for VIN change points
- f) Order/select Part No. BEC 3942 LEM

CHANGE POINTS

- 1) From (V) 575489
- 2) Up to (V) 594575
- 3) From (V) 594576
- 4) Up to (v) 629285
- 5) From (V) 629286
- 6) Up to (V) 657335
- 7) From (V) 657336

CONTRAST PIPING	'A'	'B'	'C'	'D'	'E'	'G'	'H'	'J'
DOESKIN/BUCKSKIN						WXE ⁵	WXE ⁵	
DOESKIN/ISIS BLUE					ZXE	ZXE	ZXE	
DOESKIN/MULBERRY					YXE ⁶	YXE ⁶	YXE ⁶	
DOESKIN/CHERRY RED						XXE ⁷		
MAGNOLIA/BARLEY						MZM ⁵	MZM	
MAGNOLIA/ISIS BLUE					ZZM	ZZM	ZZM	
MAGNOLIA/MULBERRY					YZM ⁶	YZM ⁶	YZM ⁶	
MAGNOLIA/CHERRY RED						XZM ⁷		
PARCHMENT/SAGEGREEN						UHZ ⁵		
SAVILE GREY/ISIS BLUE					ZLY	ZLY	ZLY	
SAVILE GREY/MID GREY						VLY ⁶	VLY	
SAVILE GREY/MULBERRY					YLY ⁶	YLY ⁶	YLY ⁶	
SAVILE GREY/CHERRY RED						XLY ⁷		

CARPETS	'R'	'S'	'T'	'U'	'V'	'W'
CHAMPAGNE	SDB ³	SDB ³	SDB	SDB ³	SDB ³	
MINK	AP ²	AP		ADP		
RATTAN	AEF	XF	AFF	AEF	AEF	AEF
SAGE GREEN	HFA ⁵		HFA ⁵	HFA ⁵	HFA ⁵	HFA
SLATE	LE ⁴	LE ⁴	LDE ⁴	LDE ⁴	LDE ⁴	
SMOKE GREY	LEA ⁶	XA	LEA	LEA	LEA	LEA
WINE RED	CEN ⁶	CN	CEN ⁶	CEN	CEN ⁶	
CHAMPAGNE/BARLEY	MSB ⁵			MSB ⁵		MSB ⁵
CHAMPAGNE/MAGNOLIA	NSB ⁵			NSB ⁵		NSB ⁵
SAGEGREEN/PARCHMENT	THA ⁵			THA ⁵		THA ⁵
RUBY				CFN ⁷		CFN ⁷
SMOKE GREY/SAVILE GREY						LAJ ⁷

NOTE: CONTRAST PIPING COLOURS – The piping colour is the second colour described eg: Champagne/Barley--where Barley is the colour of the contrast piping.

TRIM COLOUR COMBINATION CHART – FROM (V) 594576 & USA / CDN – FROM (V) 629286

OVERALL INTERIOR COLOUR DESCRIPTION	SEATS, DOOR CASINGS, CENTRE CONSOLE UNDERSCUTTLE	SEAT BELT WEBBING & FURNITURE	FACIA INCLUDES DOOR TOP ROLLS	UPPER AREA TRIM/HEADLINING ETC SUNROOF APERTURE FURFLEX	CARPET INTERIOR	DOOR APERTURE FURFLEX (DOOR WELT)	BOOT CARPET
BARLEY COTSWOLD TWEED	BARLEY COTSWOLD TWEED	BARLEY	BARLEY WARM CHARCOAL ①	DOESKIN/LIMESTONE	CHAMPAGNE RATTAN ①	DOESKIN	RATTAN ②
DOESKIN CHILTERN TWEED	DOESKIN CHILTERN TWEED	DOESKIN	DOESKIN WARM CHARCOAL ①	DOESKIN/LIMESTONE	RATTAN	DOESKIN	RATTAN ②
ISIS BLUE	ISIS BLUE	WARM CHARCOAL	WARM CHARCOAL	SAVILE GREY	SMOKE GREY	SAVILE GREY	SMOKE GREY ②
MAGNOLIA	MAGNOLIA	MAGNOLIA	DOESKIN WARM CHARCOAL ①	DOESKIN/LIMESTONE	CHAMPAGNE	DOESKIN WARM CHARCOAL	RATTAN ②
MULBERRY	MULBERRY	WARM CHARCOAL	WARM CHARCOAL	DOESKIN/LIMESTONE	WINE RED	WARM CHARCOAL	RATTAN ②
PARCHMENT	PARCHMENT	PARCHMENT	SAGE DARK STONE ① WARM CHARCOAL ①	DOESKIN/LIMESTONE	RATTAN	DOESKIN	RATTAN ②
SAVILE GREY CHEVIOT TWEED	SAVILE GREY CHEVIOT TWEED	SAVILE GREY	MED GREY WARM CHARCOAL ①	SAVILE GREY	SMOKE GREY	SAVILE GREY	SMOKE GREY ②
WARM CHARCOAL PENNINE TWEED	WARM CHARCOAL PENNINE TWEED	WARM CHARCOAL	WARM CHARCOAL	SAVILE GREY	SMOKE GREY	WARM CHARCOAL	SMOKE GREY ②

NOTES: Some model derivatives may not take all the colour combinations shown
 1) Sovereign and Daimler and XJ6/Sovereign from (V) 594576 up to (V) 629285
 2) From (V) 629286

IP1646