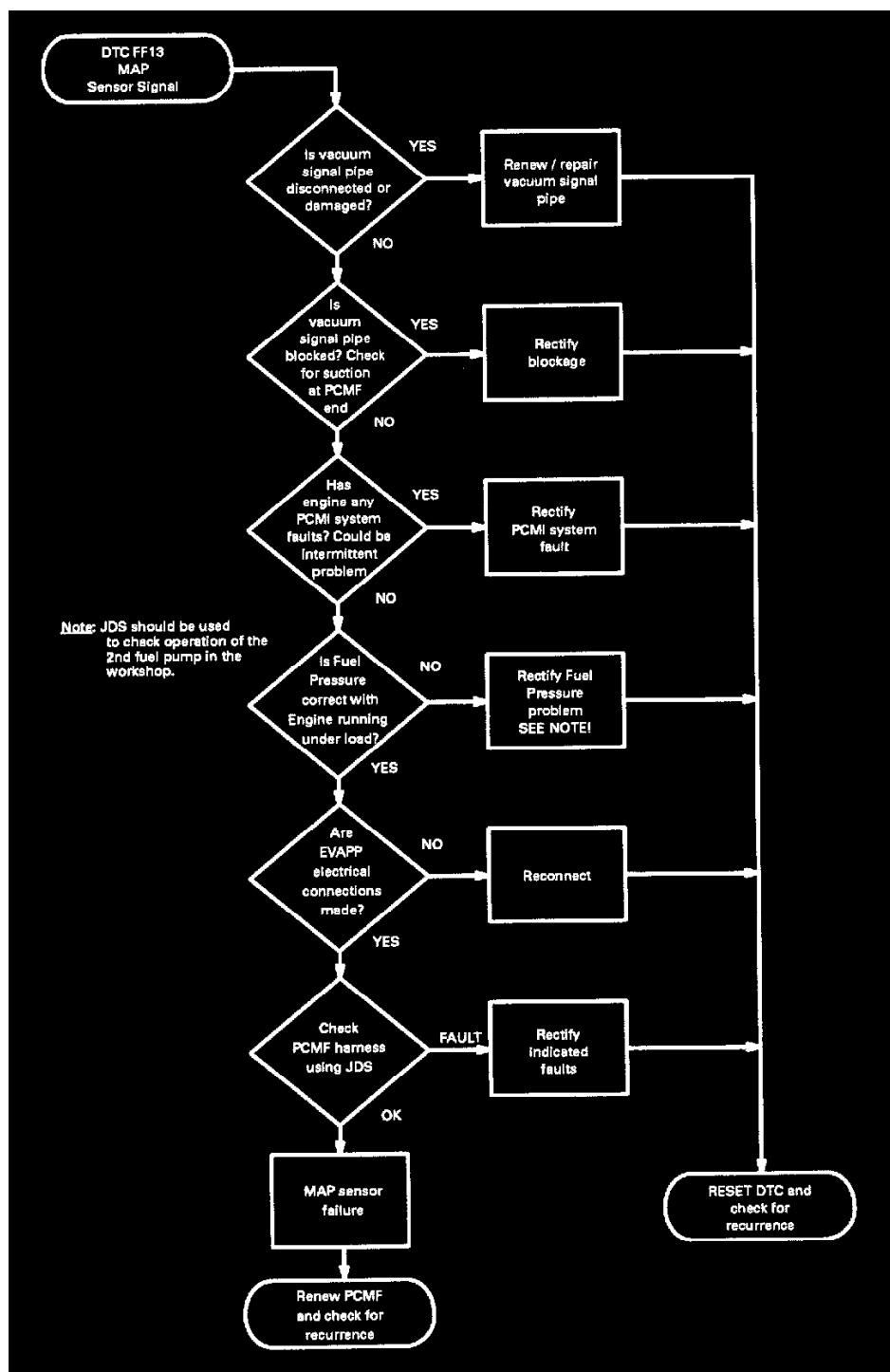


Computers and Control Systems: Diagnostic Trouble Code Tests and Associated Procedures

Code 13

36CU DTC FF13 PCMF MAP SENSOR SIGNAL

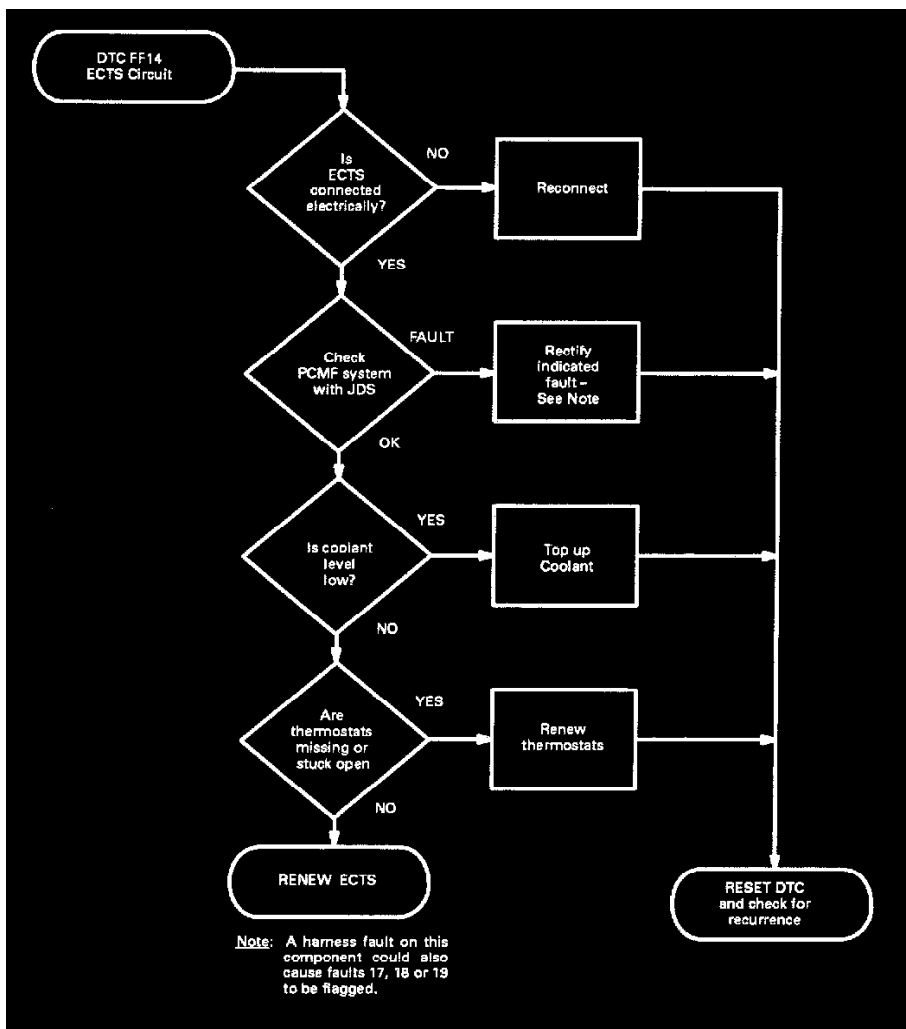
This DTC looks for a fluctuating vacuum signal during starting and monitors vacuum 'V' throttle position when the engine is running.



Code 14

36CU DTC FF14 ENGINE COOLANT TEMPERATURE SENSOR (ECTS) CIRCUIT

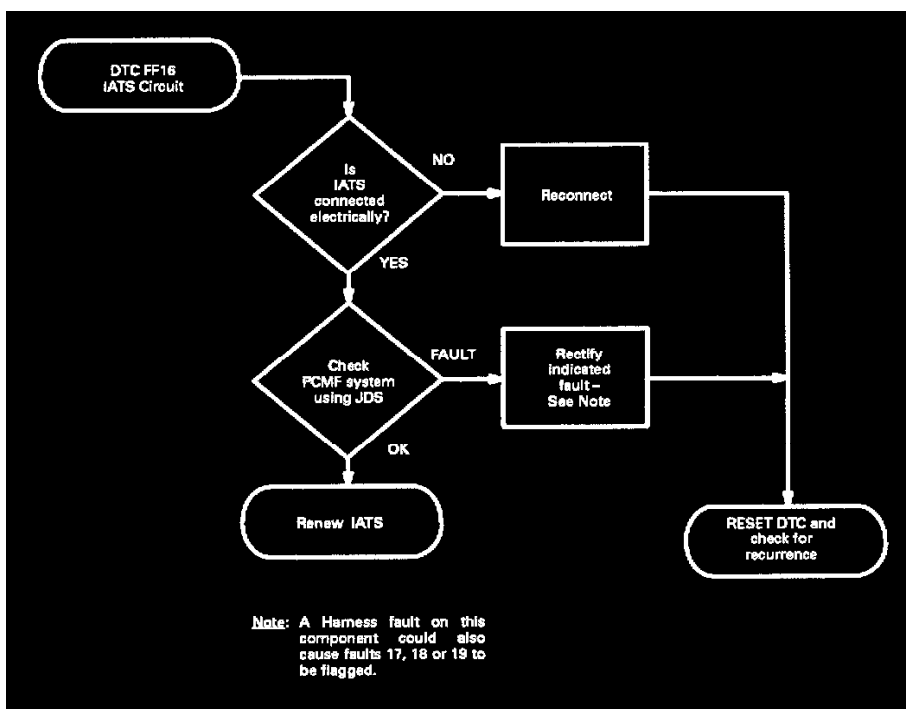
This DTC looks for the ECTS signal voltage out of range or static during engine warm-up.



Code 16

36CU DTC FF16 INTAKE AIR TEMPERATURE SENSOR (IATS) CIRCUIT

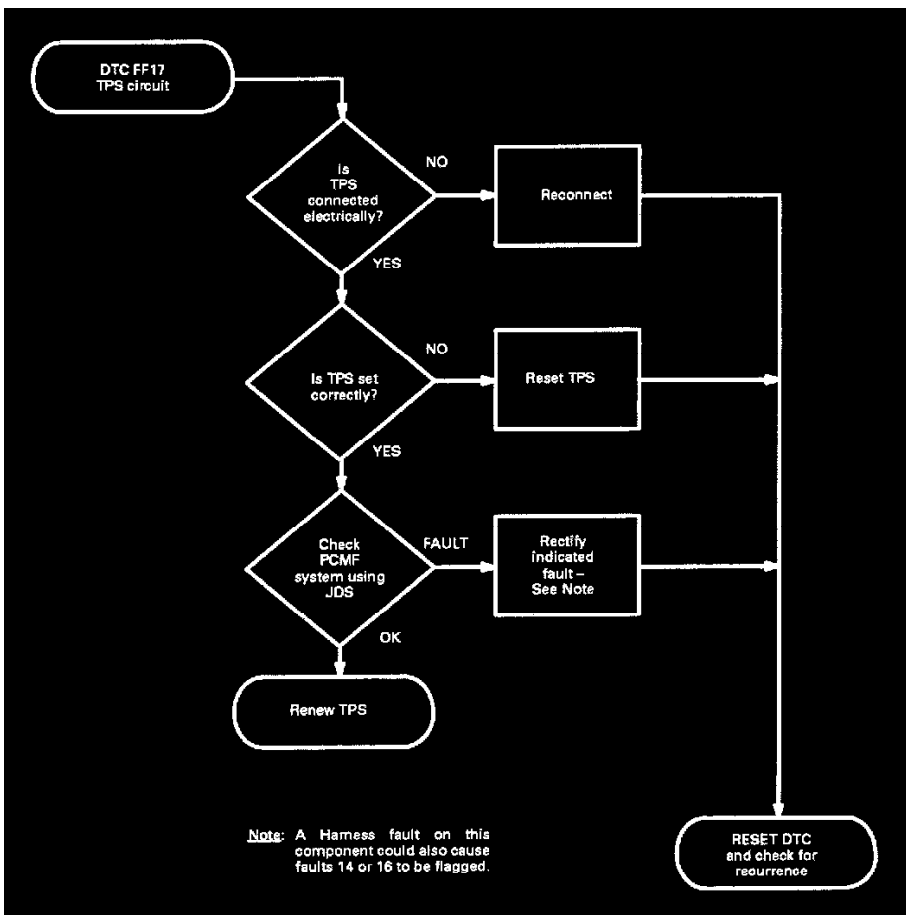
This DTC looks for the IATS out of range.



Code 17

36CU DTC FF17 THROTTLE POSITION SENSOR (TPS) CIRCUIT

This DTC looks for the TPS signal voltage out of range.

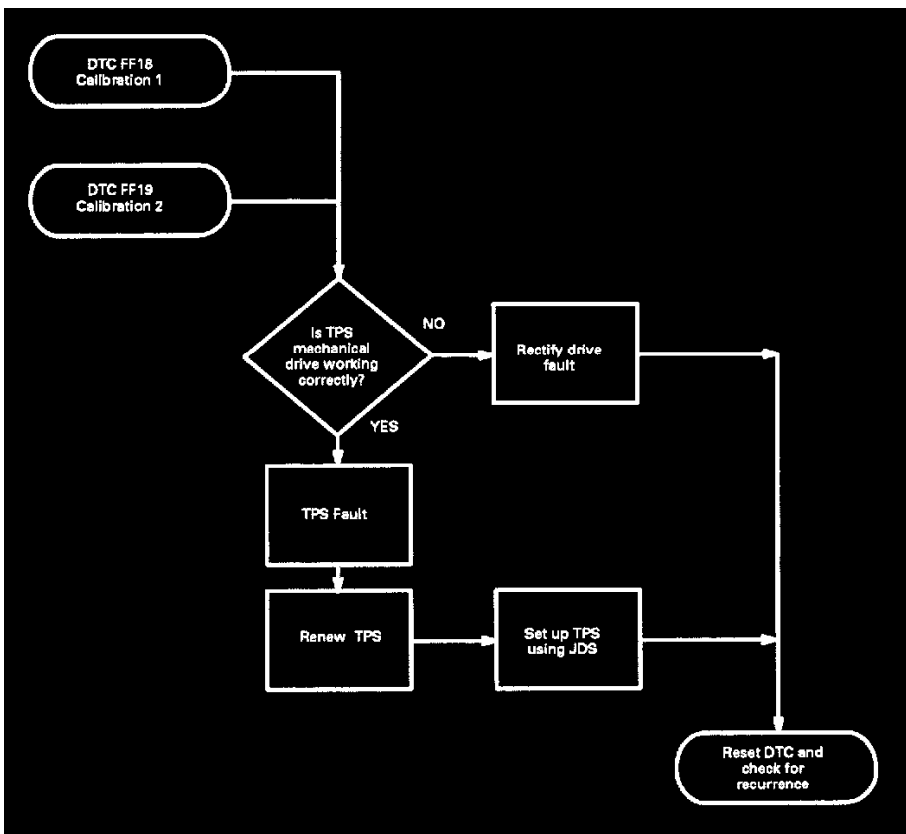


Code 18

36CU DTC FF18 AND FF19 THROTTLE POSITION SENSOR (TPS) CALIBRATION

DTC FF18. This DTC looks for low TPS signal voltage at high load (MAP).

DTC FF19. This DTC looks for high TPS signal voltage at low load (MAP).

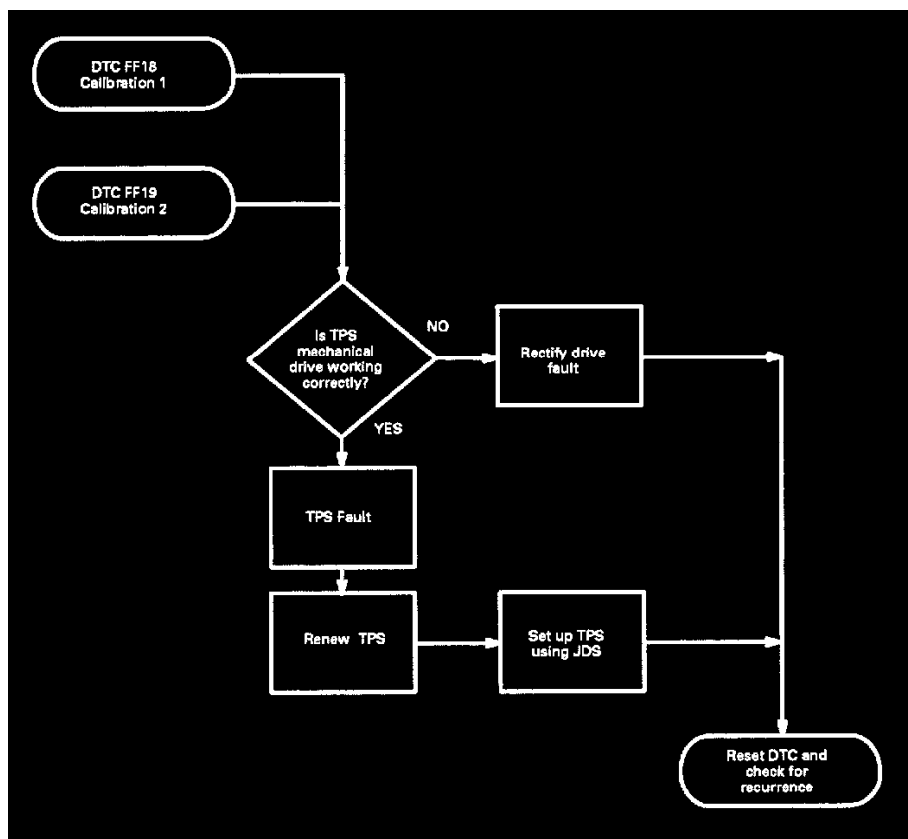


Code 19

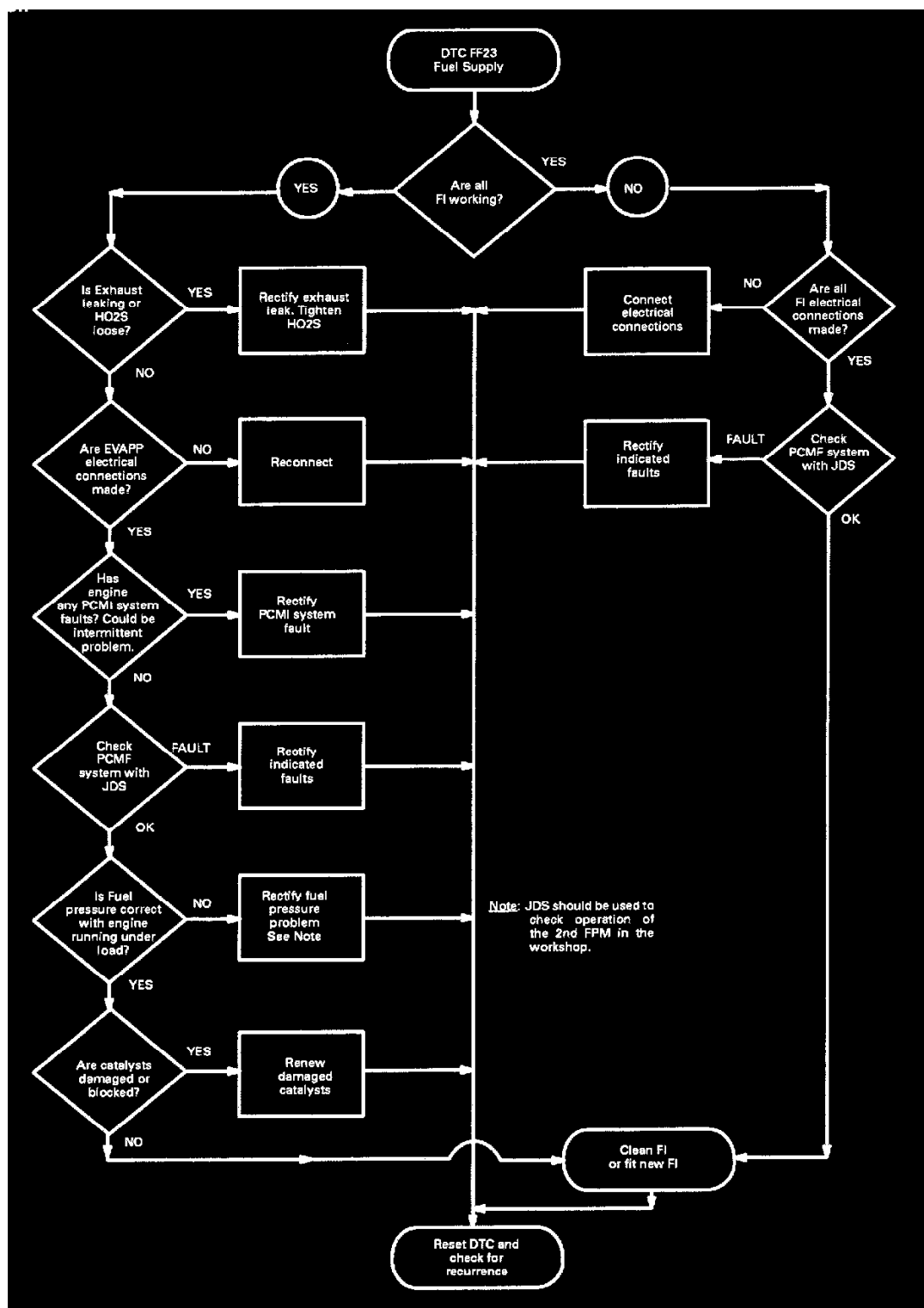
36CU DTC FF18 AND FF19 THROTTLE POSITION SENSOR (TPS) CALIBRATION

DTC FF18. This DTC looks for low TPS signal voltage at high load (MAP).

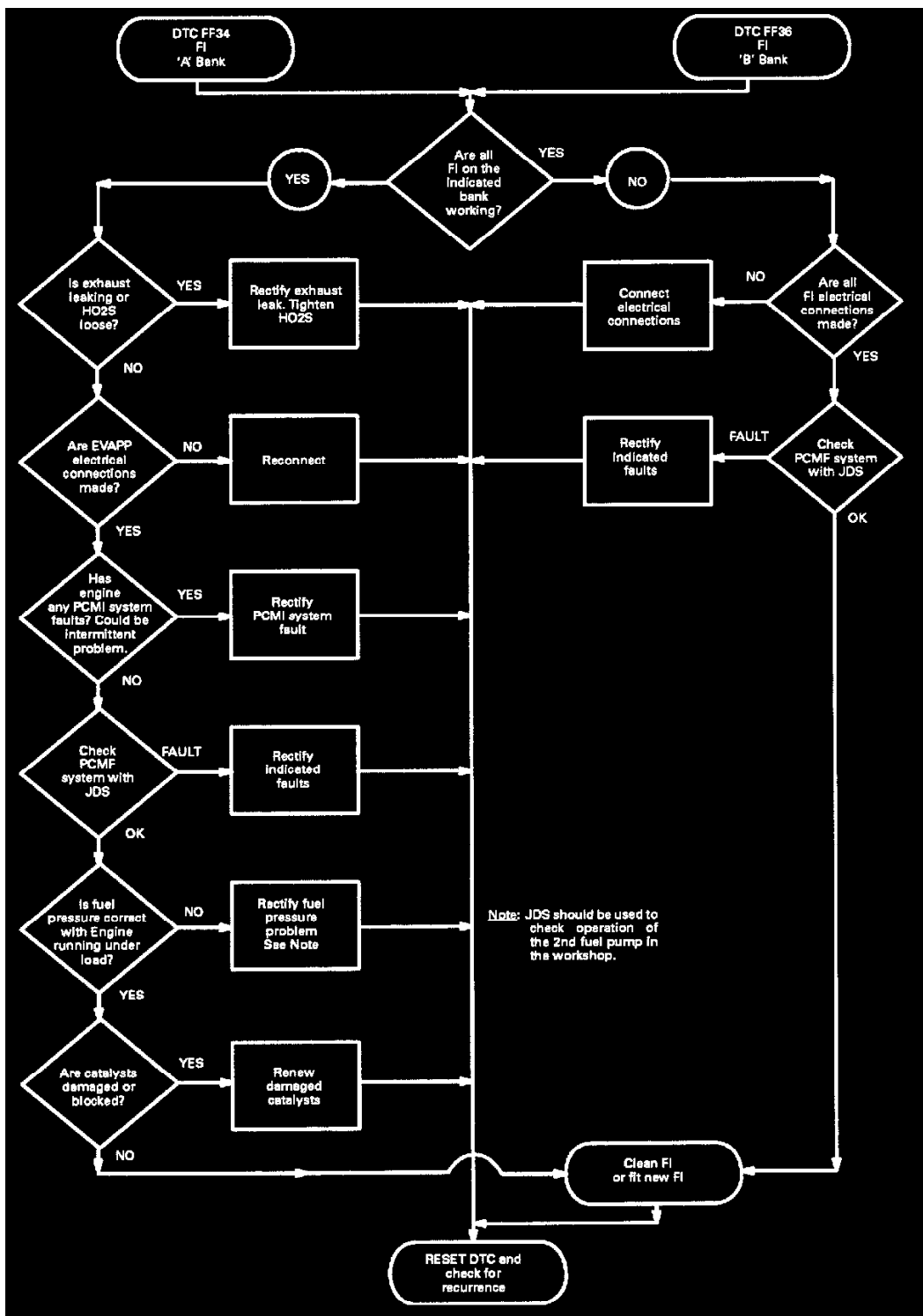
DTC FF19. This DTC looks for high TPS signal voltage at low load (MAP).

**Code 23****36CU DTC FF23 FUEL SUPPLY**

This DTC uses the HO2S signal. The feedback integrator signals (both banks) have been on the rich or lean clamps. Changes to the mixture have brought the fuelling back into control.

**Code 34****36CU DTC FF34 AND FF36 FUEL INJECTORS (FI)**

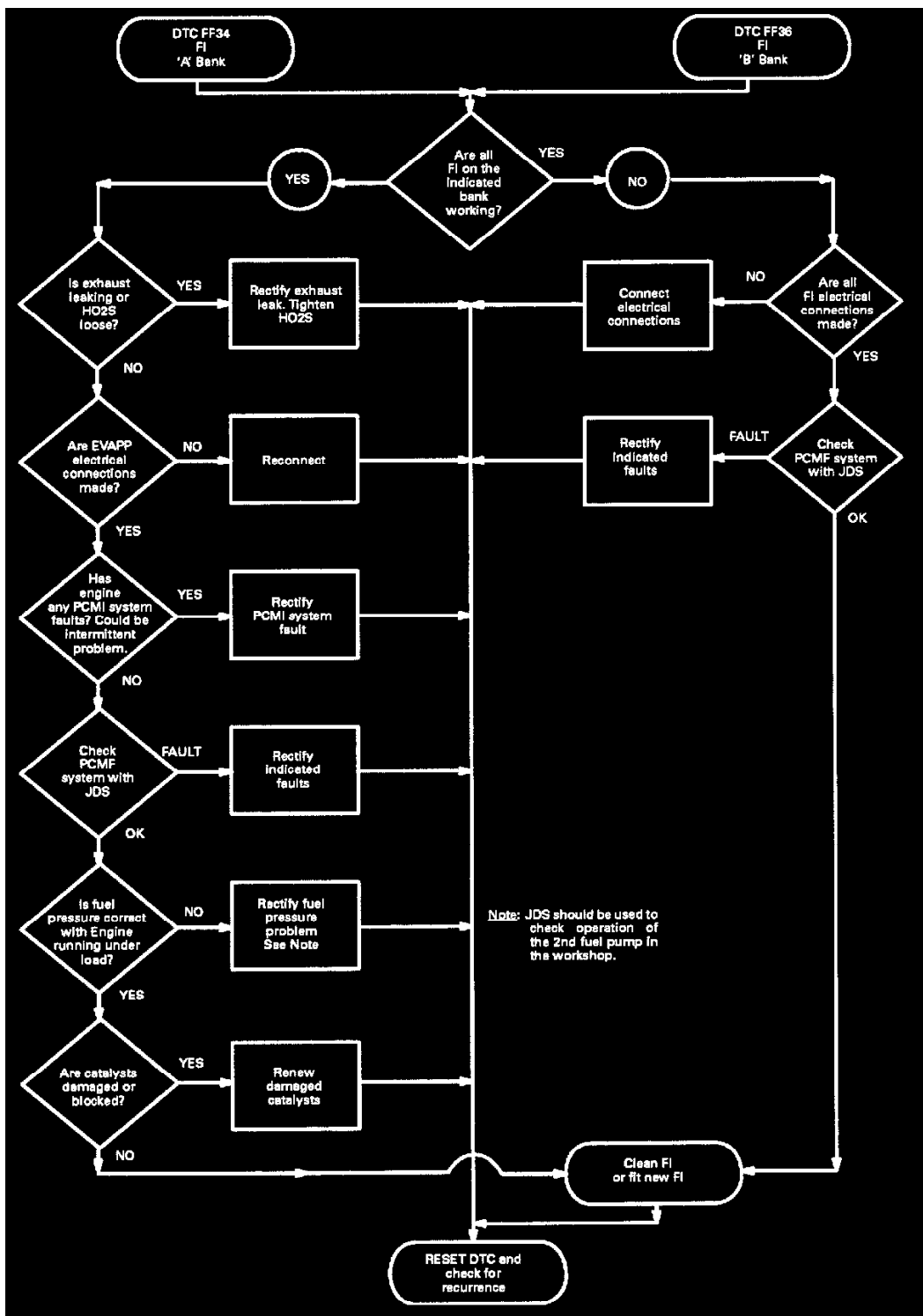
This DTC uses the HO2S signal. The feedback integrator has been on the rich or lean clamp on one bank. Changes to the mixture have brought the fuelling on that bank back in control.



Code 36

36CU DTC FF34 AND FF36 FUEL INJECTORS (FI)

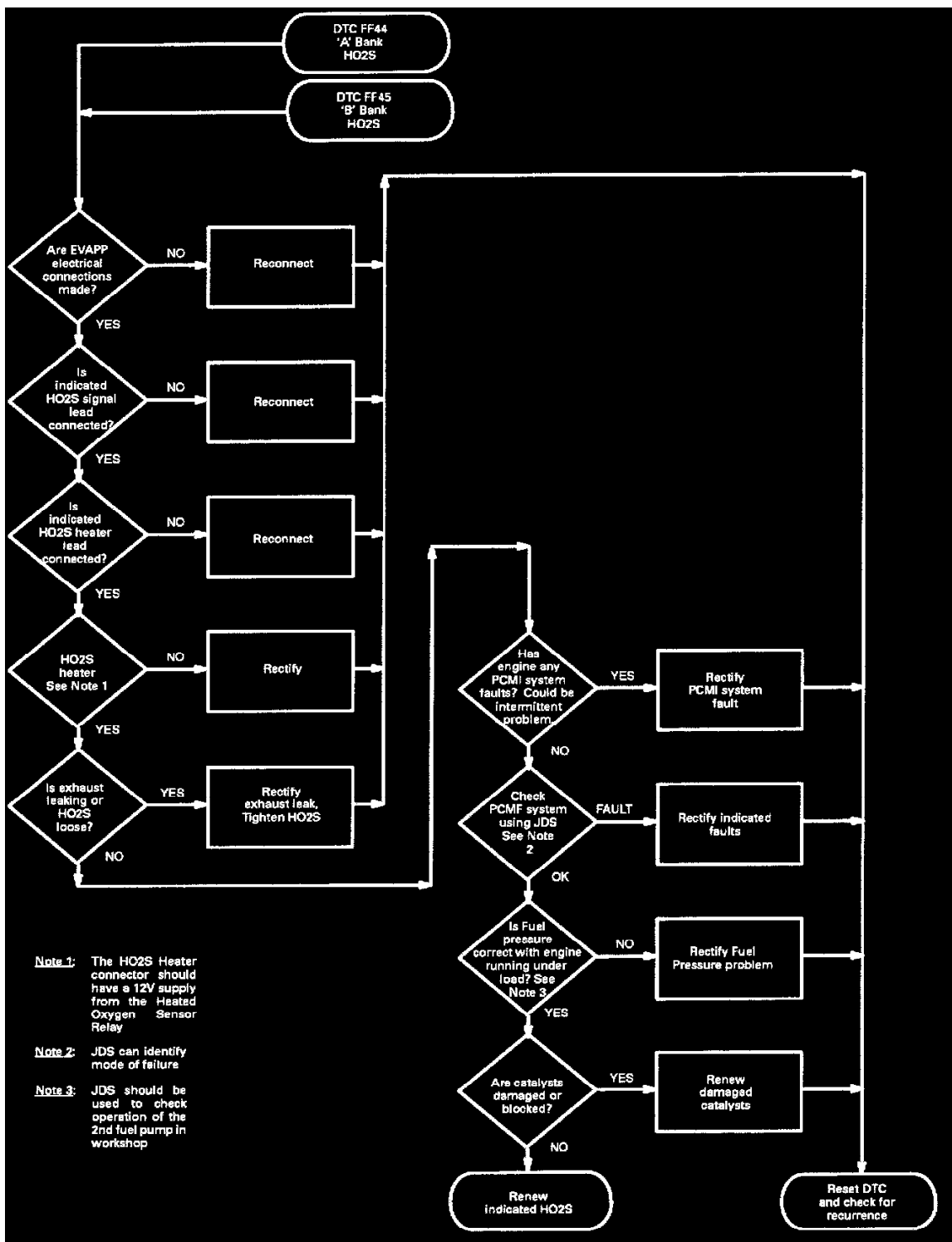
This DTC uses the HO2S signal. The feedback integrator has been on the rich or lean clamp on one bank. Changes to the mixture have brought the fuelling on that bank back in control.



Code 44

36CU DTC FF44 AND FF45 HEATED OXYGEN SENSOR HO2S CIRCUIT

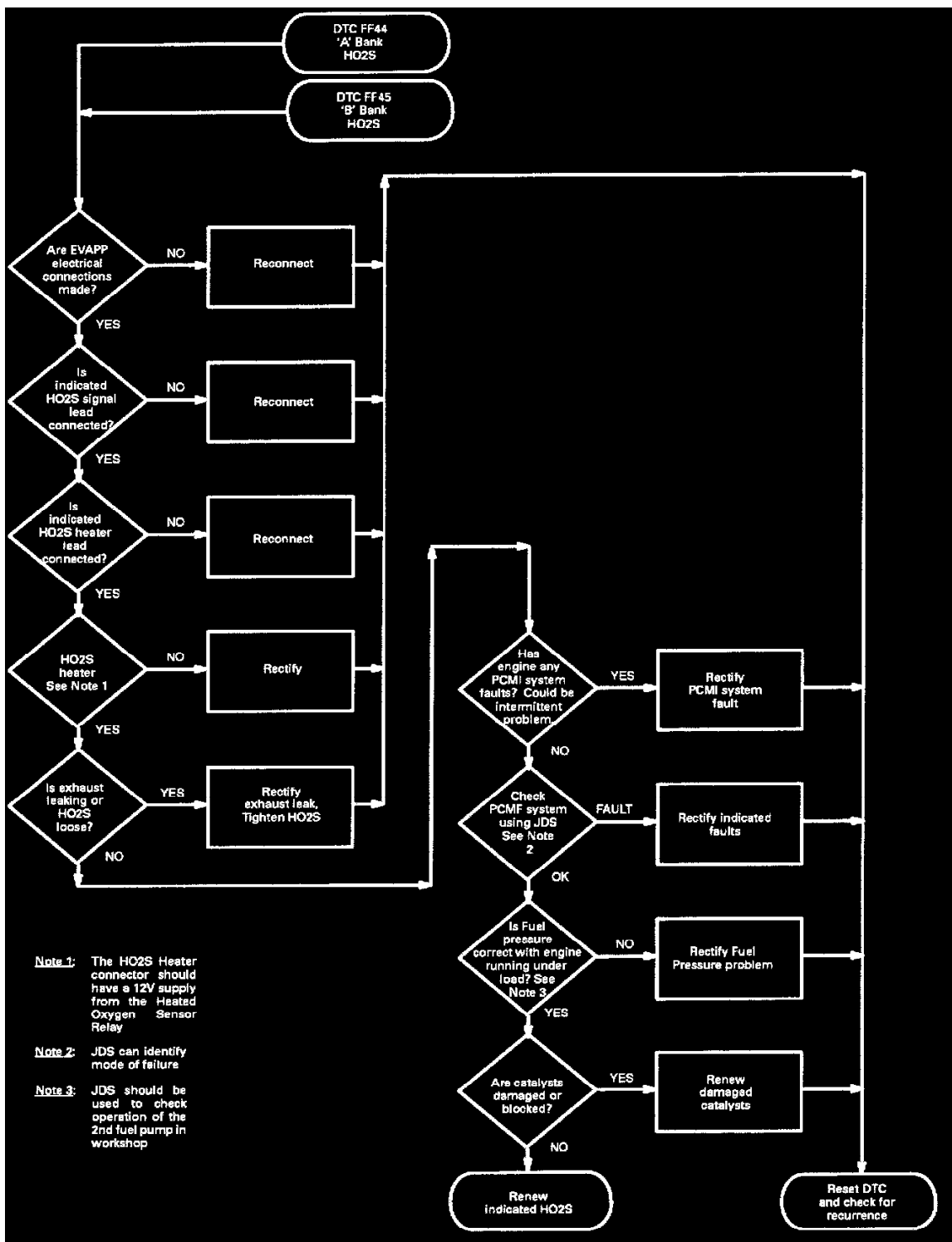
DTC FF44 and FF45 monitor the HO2S signal for the correct output. The feedback integrator on one or both banks has been on clamp. Changes to the mixture have produced no response from the HO2S and the integrator has remained on clamp.



Code 45

36CU DTC FF44 AND FF45 HEATED OXYGEN SENSOR HO2S CIRCUIT

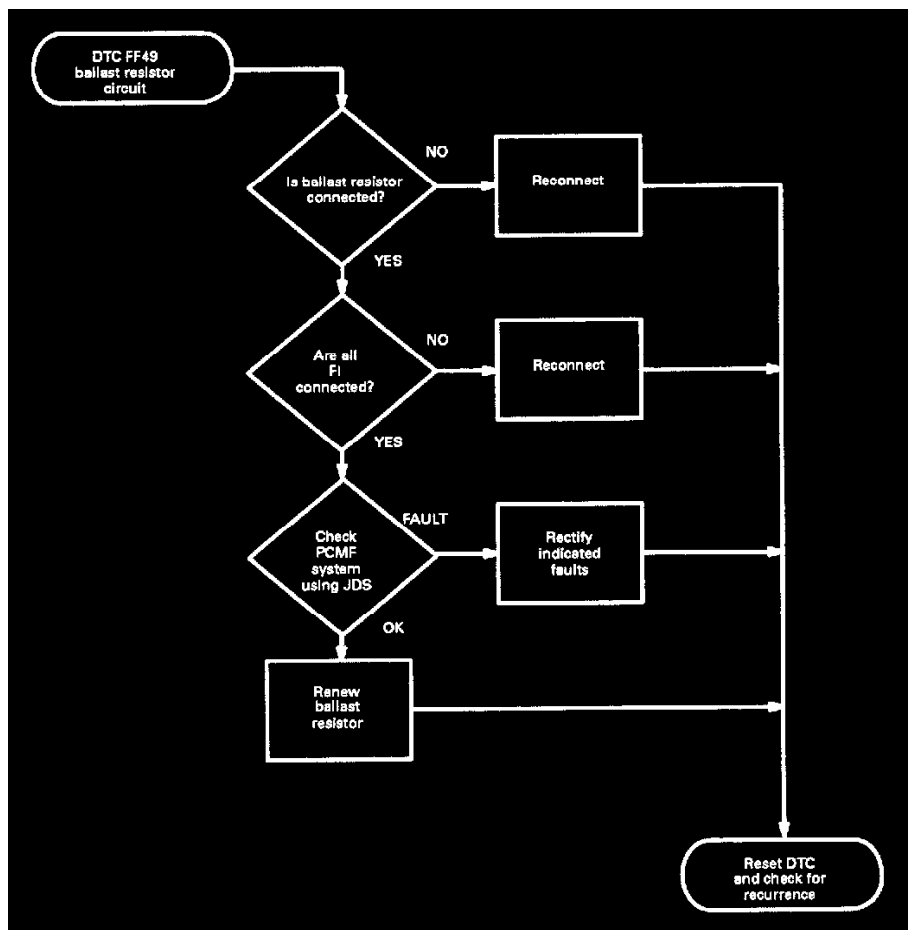
DTC FF44 and FF45 monitor the HO2S signal for the correct output. The feedback integrator on one or both banks has been on clamp. Changes to the mixture have produced no response from the HO2S and the integrator has remained on clamp.



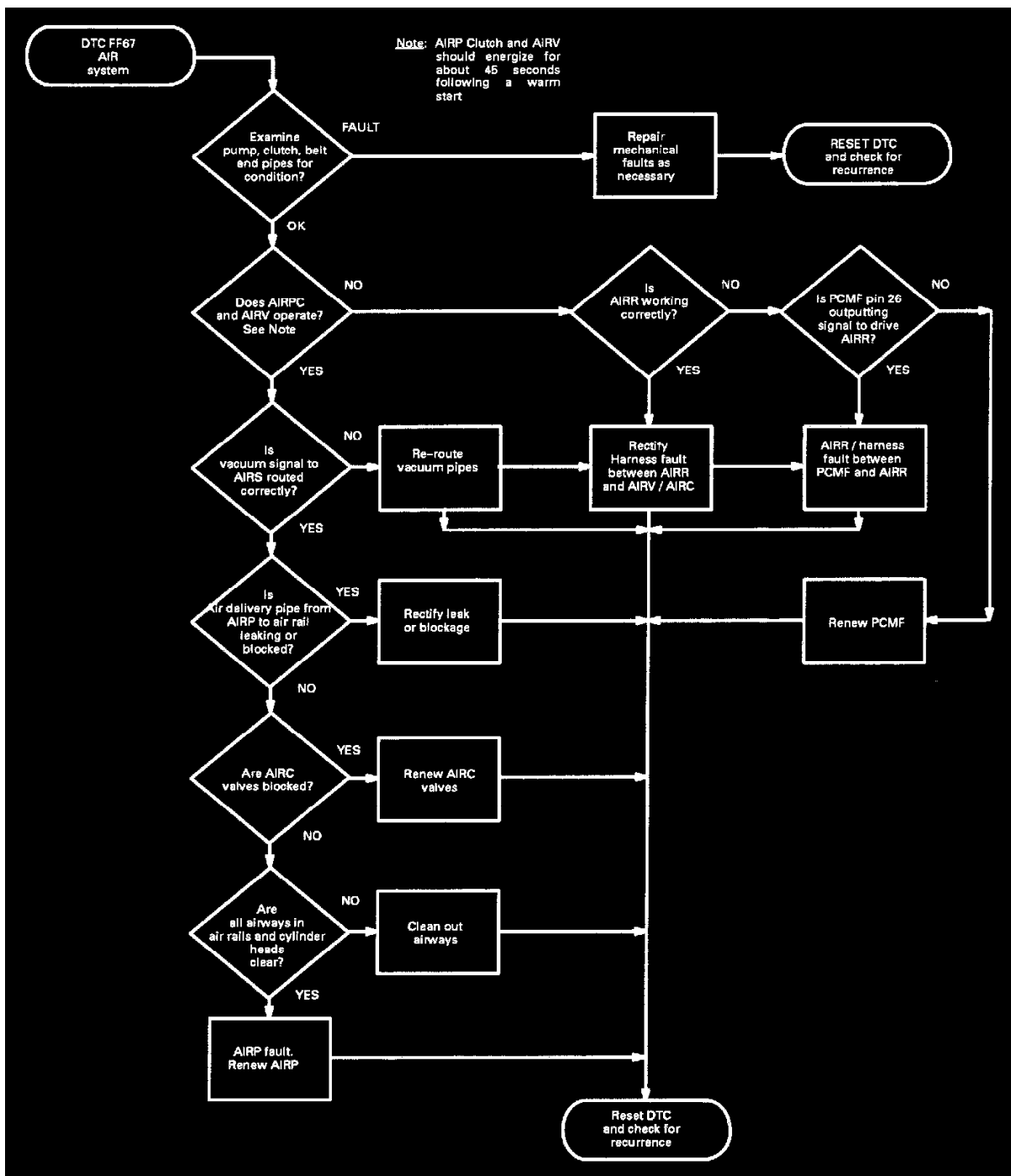
Code 49

36CU DTC FF49 BALLAST RESISTOR CIRCUIT

This DTC monitors that the Ballast Resistor is connected electrically.

**Code 67****36CU DTC FF67 SECONDARY AIR INJECTION SYSTEM (AIR)**

This DTC monitors monitors the effect of Air Injection on the HO2S signal under test conditions.



Code 77

36CU DIC FF77 SPEED SIGNAL FROM PCMI

This DTC detect intermittent loss of the speed signal from the Ignition System. It will not detect a missing speed signal on cranking.

