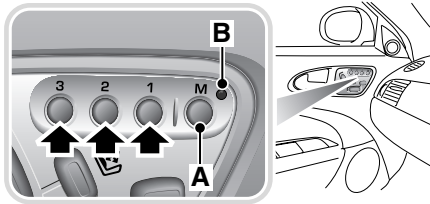


Convenience Features

MEMORY FUNCTION



JAG0043L

This facility enables the position of the driver's seat, steering column and exterior rear view mirrors to be memorised and recalled. Three different comfort position profiles can be entered in the memory.

Setting a driving position

To store a driving position in the memory:

1. Adjust the seat, steering column and exterior rear view mirrors to the desired positions.
2. Push the **M** memory button **A** and the red LED in the door switchpack **B** will illuminate for a five second period.
3. While the red LED is illuminated, push either button **1**, **2** or **3** to memorise the configuration. The LED will go out and a chime will indicate that the setting procedure is complete. Additionally, if the ignition is on, the message centre will display a message that the settings have been saved.

To replace a memorised position with a new position

Adjust the seat to the desired position, perform steps 2 and 3. The previous memory will be erased and the new position will be set.

Recalling a memorised position from the door switchpack

Press and hold the appropriate memory button (**1**, **2** or **3**). The button has to be pressed and remain pressed until the recall is complete. If the button is released before total recall is completed, all movement will cease.

Memory system operating tips

- When making adjustments to a set driving position, reset the new position using the same memory button.
- Ensure that the seat has completed moving into the required memory position before shifting the gear selector from the **P** position.

Passenger seat memory setting

The passenger door has a seat memory switch pack similar to that on the driver's door.

The passenger seat can be set to three memory positions by using the memory setting buttons **1**, **2** and **3**.

The procedure for the setting and the recalling of the passenger seat memory is the same as for the driver's seat.

However, there are no acceptance messages or completed procedure chime.

Convenience Features

INSTRUMENT LIGHTING DIMMER

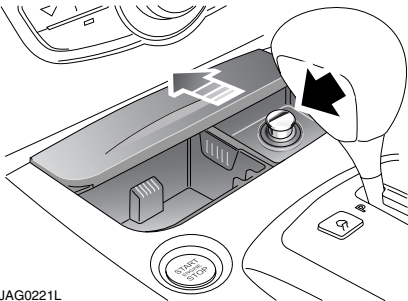


JAG0219L

The instruments, switch packs, touch-screen will be illuminated when the exterior lights are switched on.

1. Push and release the knob to extend it for ease of operation.
2. Rotate the knob to adjust the illumination.
3. Push the knob again to place it in the stowed position.

CIGAR LIGHTER



JAG0221L

To gain access to the cigar lighter and ashtray, push the lid at the bottom edge.

To operate the cigar lighter the ignition must be on, press the lighter in and wait until the element has heated, it will then pop-up.

Note: Never hold the lighter knob down. Do not attempt to remove particles from the heating element as it is self-cleaning. The cigar lighter is designed to be used just to heat the lighter element and not for providing a power source for accessories.

The cigar lighter is replaced by a 12 volt accessory socket on certain models.

ASHTRAY



WARNING:

Do not use the ashtray for disposing of waste paper or other combustible items.

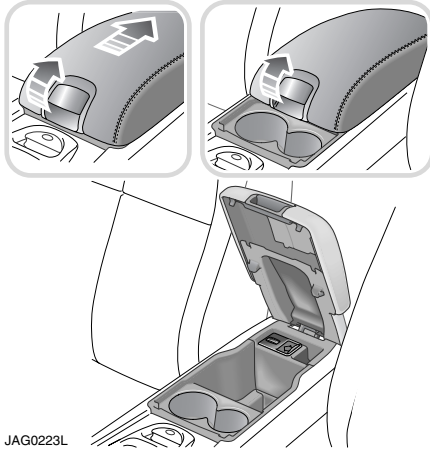
To empty the ashtray, lift out vertically and remove. After emptying, push the ashtray into the opening until it snaps back into place.

Passenger door ashtrays (supplied with smokers pack)

To remove the passenger door ashtray bin, lift it out vertically.

Convenience Features

CENTRE CONSOLE



JAG0223L

The sliding armrest is hinged at the rear and has a release button located on the front of the armrest.

Pull the chromed button upwards to raise the armrest and gain access to the cubby box. As the armrest is lifted it slides back under its own weight allowing full access to the cubby box.

CUPHOLDERS



WARNING:

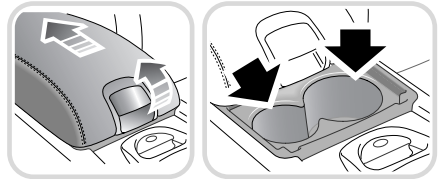
The driver should not drink or use the cup holder whilst driving.

The cup holder should be kept closed when not in use.

Do not place anything other than suitable drink containers in the cup holder. Such items may be thrown about in the compartment in the event of an accident or emergency manoeuvre, which may cause injuries to the occupants.

Do not carry open-top drink containers in the cup holders while the vehicle is in motion: a spilled hot drink could cause personal injury, and may damage upholstery, carpeting and electrical components.

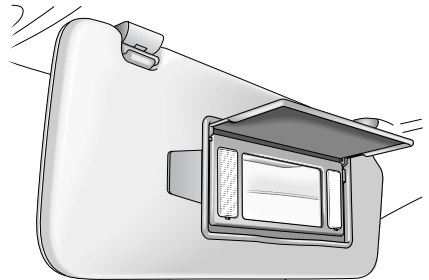
Use only for soft drinks containers. Do not use to hold cups made of glass, china or hard plastic, as these may cause injury in the event of an accident or emergency manoeuvre. Unopened, sealed containers (drinks cans, for example) are hard objects and may also cause injury.



JAG0556G

To slide the armrest to expose the two cupholders, pull the chromed button upwards and slide the armrest rearwards.

SUN VISORS



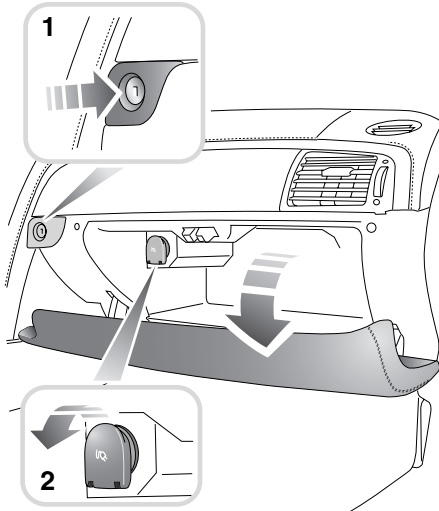
JAG0225L

Adjustable sun visors can be swung downwards or unclipped and swung sideways to reduce sun glare.

Convenience Features

The sun visors are fitted with a ticket holder and illuminated vanity mirrors. The light comes on when the flap is lifted.

GLOVE BOX



To open the glove compartment, press the release button **1** and allow the lid to drop down. The compartment will be illuminated when open.

If the compartment is left open the light will extinguish after approximately 40 minutes.

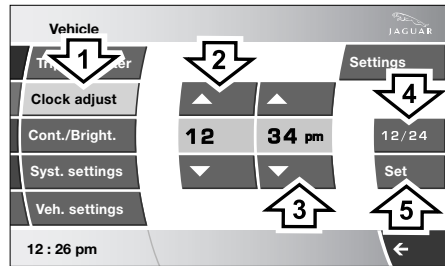
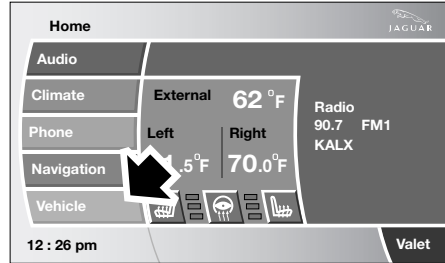
The glove compartment can be locked using the key blade and secured for valet mode, see page 45.

Accessory socket

An electrical accessory socket **2** is located inside the glove compartment. This 12 volt socket should only be used for the temporary connection of electrical items, such as a vacuum cleaner or cooler.

CLOCK

The clock time can be adjusted via the **Home** screen by selecting **Vehicle**.



JAG0230NAS

1. Select Clock adjust.

2 and 3. Press the appropriate **up** or **down** buttons to adjust the hours and minutes.

4. Cycles between 12 and 24 hour clock display. On the 12 hour display the am or pm is displayed as appropriate.

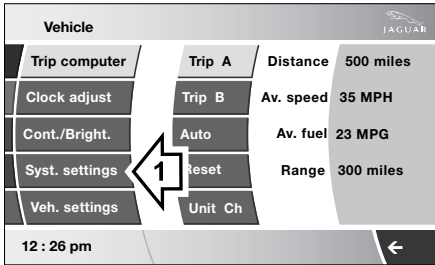
5. The displayed clock time in the bottom left-hand corner will not change to the new time until the **SET** button is pressed.

If the **SET** button is not pressed the altered time will be lost on exiting from the screen.

Convenience Features

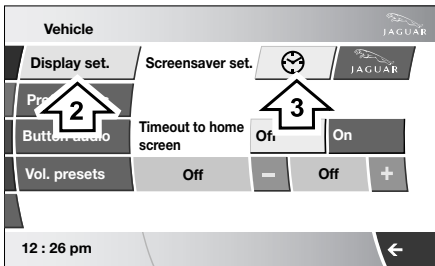
To set the clock as screen saver

From the main Home screen press the **Vehicle** button.



JAG0231NAS

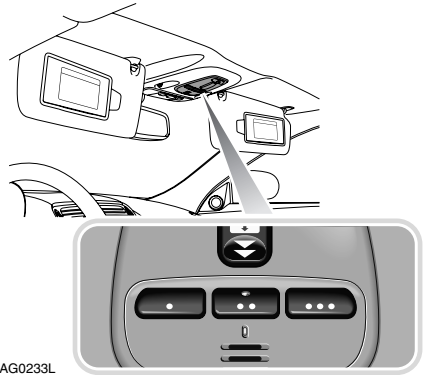
1. Select the **Syst. settings** button.



JAG0545NAS

2 and 3. Press **Display set.** followed by either **Clock** or **Leaper** depending which screen saver you wish to display. The clock screen saver is the system default setting.

GARAGE DOOR TRANSCIVER



JAG00233L

The door transceiver is located in the roof console. It can be programmed to transmit the radio frequencies of up to three different transmitters which can be used to activate garage doors, entry gates, home lighting, security systems, or other radio frequency operated devices.

Although this section mainly describes the procedures for a garage door opener, it also equally applies to the previously mentioned applications.

In some countries this feature is also known as the HomeLink® Universal Transceiver.

The transceiver radio frequency approval numbers for the USA, Canada and Mexico are shown below:

USA - FCC: K8597 R315.

Canada - CAN: 2145 101 790A.

Mexico -

CFT/D04/AGIT/DGIH/HOM/6068/01 and 7335/01

Convenience Features

For further information, or for assistance, contact your Jaguar Dealer, or the supplier by phone or via the internet. For details, see Information and Assistance on page 146.



WARNING:

- **Do not use the transceiver with any garage door opener that lacks the safety stop and reverse feature as required by safety standards. Using a garage door opener without these features increases risk of serious injury or death.**
- **When programming the transceiver to a garage door opener or entry gate, ensure the area is clear. This will prevent potential harm or damage as the gate or garage door will activate during the programme.**

Caution: This device may suffer from interference if operated in the vicinity of a mobile or fixed station transmitter. This interference is likely to affect the hand-held transmitter as well as the in-car transceiver

Before programming

Caution: When programming a garage door opener or entry gate that may require you to press and re-press the hand-held transmitter (cycle), unplug the device during the cycling process to prevent possible motor failure.

It is recommended that for best results, fit a new battery to the hand-held transmitter of the garage door opener (or other device) before programming.

If your garage door opener receiver (located in the garage) is equipped with an antenna, ensure that the antenna is hanging straight down.

To erase all programming

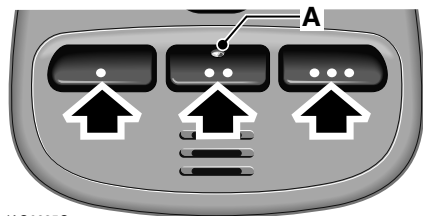
For first time programming, ensure that the engine is switched off:

1. Ensure that the ignition system is in **convenience mode**.
2. Press and hold the two outer buttons on the transceiver in the overhead console. Keep the buttons pressed, the indicator light, **A**, will illuminate. The indicator light is part of the middle button.
3. Release the buttons when the light begins to flash (this will take approximately 20 seconds).

All memories in the garage door opener have now been cleared.

Note: Do not perform this procedure when programming the additional garage door opener buttons.

Programming the vehicle



JAG0235G

Ensuring that the engine is switched off:

1. Ensure that the ignition system is in **convenience mode**.

Convenience Features

2. Hold the end of the original garage door opener hand-held transmitter approximately 50 to 150 mm (2 to 6 inches) away from the transceiver in the roof console, keeping the indicator light **(A)** in view.
3. Using both hands, simultaneously press and hold both the desired garage door opener button on the overhead console, as shown above, and the **hand-held transmitter button**. Keep both buttons pressed. The indicator light will flash slowly at first and then change to a fast flash. When the indicator light flashes rapidly, release both buttons. The rapid flashing light indicates successful programming.
4. If, after 60 seconds, the indicator light does not flash rapidly, release both the transceiver and the hand-held transmitter buttons and repeat the procedure starting with Step 2. Position the hand-held transmitter at a different angle and or distance.
5. Press and hold the programmed overhead console garage door opener button and observe the indicator light.
 - If the indicator light is continuous, programming is complete and your device should activate when the garage door opener button is pressed and held for approximately 1 to 2 seconds and then released.
 - If the indicator light blinks rapidly for two seconds and then turns a continuous light, proceed with the following programming instructions for **rolling code** device equipment.

***Note:** To programme additional garage door opener buttons, begin at Step 2.*

Rolling code device equipment programming

***Note:** A second person may make the following steps quicker and easier as once the button has been pressed there are 30 seconds only in which to complete Step 3.*

1. At the garage door opener receiver (motor head unit) in the garage, locate the learn or smart button/switch.

***Note:** The name of the button/switch may vary between manufacturers.*
2. Press and release the learn or smart button.
3. Return to the vehicle and firmly press and hold the programmed garage door opener button for two seconds and release.
4. Repeat the press, hold, release sequence three times to complete the training process.

The garage door opener in the overhead console should now activate the **rolling code** device.

Reprogramming a single garage door opener button

To programme a device to previously trained button:

1. Press and hold the desired pre-programmed garage door opener button for at least 20 seconds, but no longer than 30 seconds, until the indicator light begins to flash.

Convenience Features

2. Without releasing the overhead console button, position the hand-held transmitter approximately 50 to 150 mm (2 to 6 inches) away from the transceiver in the overhead console, keeping the indicator light in view.
3. Carry out Step 3 of Programming the Vehicle on page 144.

Entry gate/Canadian programming

The technology of some entry gates requires you to press and re-press (cycle) the hand-held transmitter button every two seconds during programming.

Continue to press and hold the desired overhead console button while you cycle your hand-held transmitter until the indicator light flashes rapidly.

Information and assistance

Caution: It is recommended that when you sell or dispose of the vehicle, the programmed transceiver buttons be erased for security purposes.

If you would like additional information on the HomeLink® Universal Transceiver, compatible products or to purchase other accessories such as the HomeLink® lighting package, contact your Jaguar Dealer, or HomeLink® at 1-800-355-3515 or on the Internet at

www.homelink.jci.com.

Note: *Keep the original transmitter for future use or programming procedures if, for example, you purchase a new vehicle.*

Note: *The manufacturer is not responsible for any radio or TV interference caused by unauthorised modifications to this equipment. Such modifications could void the user's authority to operate the equipment.*