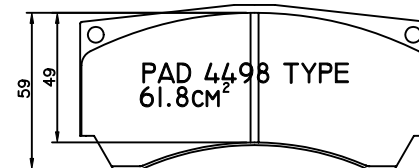
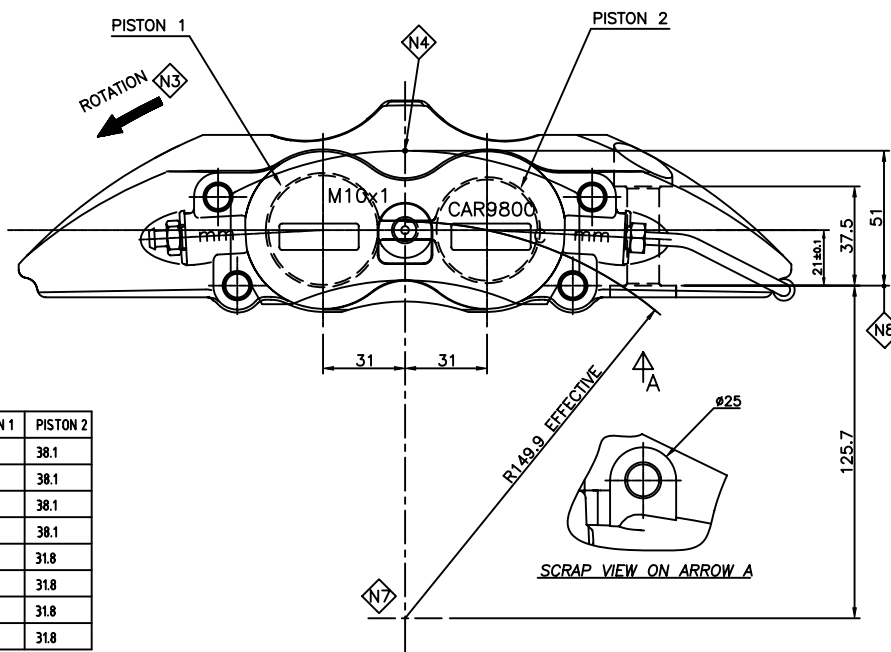
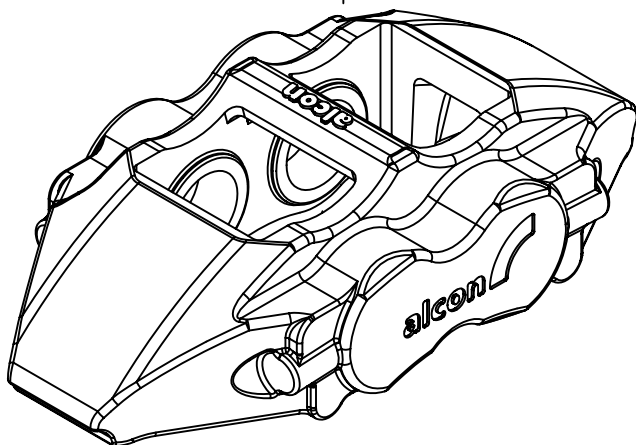


REVISION		
ISSUE	DATE	PARTICULARS
A	15.03.02	FIRST ISSUE
B	18.07.02	PART NUMBERS CAR9850H02, B01, B02
C	04.06.03	CAR9856H02, B01 AND B02 SCRAP VIEW ON ARROW A ADDED
D	29.04.04	EFFECTIVE RADIUS 149.9 ADDED

NOTES:

- N1: RIGHT HAND TRAILING CALIPER AS DRAWN
LEFT HAND TRAILING SYMMETRICALLY OPPOSITE
- N2: MANUFACTURING SPECIFICATION: RC2013
- N3: DISC ROTATION. DISC MUST PASS SMALL
PISTON DIAMETER FIRST.
- N4: INSTALL CALIPER WITH PAD 0.8mm BELOW DISC
- N5: BLEED SCREW: - 14Nm HOT
- 18Nm COLD
- N6: ALL DIMENSIONS ARE NOMINAL
- N7: DISC AXIS
- N8: CALIPER MOUNTING FACE



CALIPER PART No.	DISC WIDTH	W1	W2	W3	W4	W5	DIM C	DIM D	PISTON 1	PISTON 2
CAR9850H01HRL/LL/LT/RL/RT	Ø355 x 32	72.5	67.5	45.0	28.0	82.5	38.0	180	4.13	38.1
CAR9856H01HRL/LL/LT/RL/RT	Ø355 x 28	70.5	65.5	43.0	26.0	80.5	36.0	180	4.13	38.1
CAR9850H02HRL/LL/LT/RL/RT	Ø355 x 32	72.5	67.5	45.0	28.0	82.5	38.0	188	4.13	38.1
CAR9856H02HRL/LL/LT/RL/RT	Ø355 x 28	70.5	65.5	43.0	26.0	80.5	36.0	188	4.13	38.1
CAR9850B01HRL/LL/LT/RL/RT	Ø355 x 32	72.5	67.5	45.0	28.0	82.5	38.0	180	31.8	31.8
CAR9856B01HRL/LL/LT/RL/RT	Ø355 x 28	70.5	65.5	43.0	26.0	80.5	36.0	180	31.8	31.8
CAR9850B02HRL/LL/LT/RL/RT	Ø355 x 32	72.5	67.5	45.0	28.0	82.5	38.0	188	31.8	31.8
CAR9856B02HRL/LL/LT/RL/RT	Ø355 x 28	70.5	65.5	43.0	26.0	80.5	36.0	188	31.8	31.8

© 2003 Alcon Components Ltd Tamworth England
THIS DOCUMENT IS CONFIDENTIAL AND THE DOCUMENT AND THE COPYRIGHT THEREIN ARE THE PROPERTY OF ALCON LTD. THE DOCUMENT AND ANY INFORMATION THEREIN MAY NOT BE USED, COPIED OR DISCLOSED TO ANY THIRD PARTY WITHOUT THE PRIOR WRITTEN AUTHORIZATION OF ALCON COMPONENTS LTD.

DRAWN NF DATE 15.03.02
APPROVED PJS SCALE FULL SCALE

TITLE
MONOBLOC CALIPER INSTALLATION

DRG No. **CAR98102**