

## Locks

- The key blade can be used to open the luggage compartment release lock **4**, located behind the number plate, but this will cause the alarm to sound.

**Caution:** If the luggage compartment is opened after the driver and passenger doors are locked, ensure the Jaguar Smart Key remains outside the vehicle when it is closed again.

### Vehicles without Keyless Entry

If the Jaguar Smart Key is inadvertently left inside the vehicle, you will be locked out. You should contact your Jaguar Dealer.

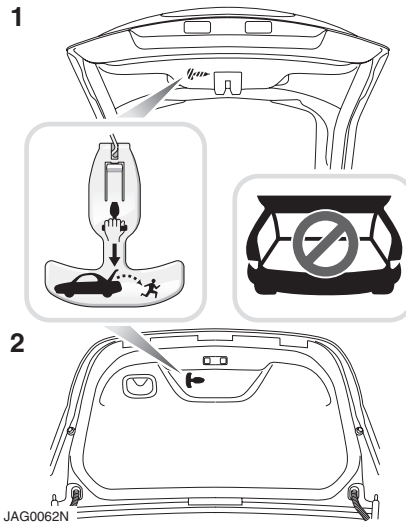
### Vehicles with Keyless Entry

**Caution:** If the Jaguar Smart Key is inadvertently left inside the vehicle, an audible alarm will sound and the luggage compartment lid will re-open after three seconds.

**Note:** If the Jaguar Smart Key is placed in a metal container, it will not be detected.

All Jaguar Smart Keys must be removed from the vehicle before locking.

### Luggage compartment emergency release



Your vehicle is equipped with a mechanical interior luggage compartment release handle that provides a means of escape for children and adults in the event they become locked inside the luggage compartment.

Adults are advised to familiarise themselves with the operation and location of the release handle.

The T-shaped handle is located on the luggage compartment lid, coupe **1** and convertible **2**.

To open the luggage compartment lid from the inside, pull the T-shaped handle and push up the lid. The material that the handle is made of will glow for hours in the darkness of the luggage compartment following brief exposure to ambient light.