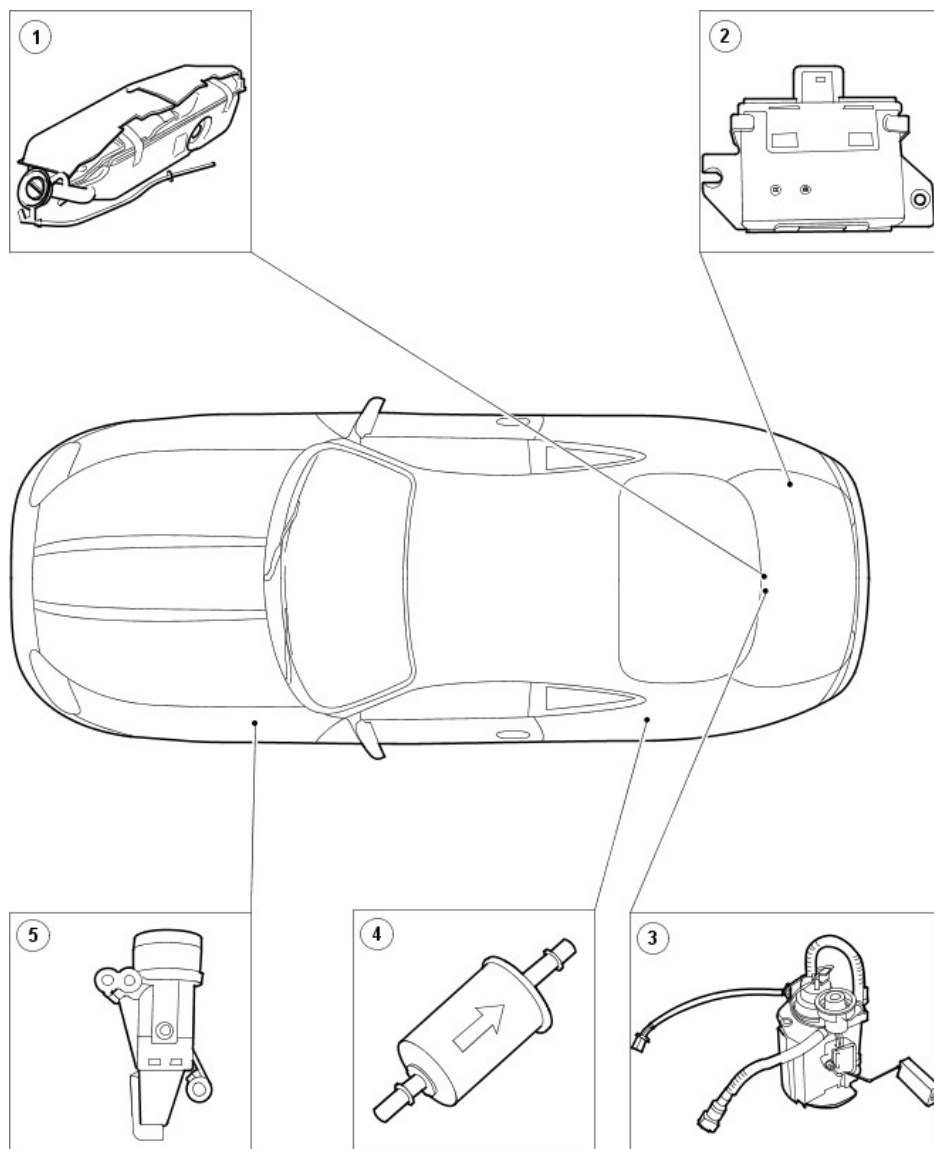


## Fuel Tank and Lines - Fuel Tank and Lines

Description and Operation



E38032

Item	Part Number	Description
1	-	Fuel tank
2	-	Fuel pump driver module
3	-	Fuel pump module
4	-	Fuel filter
5	-	Inertia fuel shutoff (IFS) switch

### Fuel System

The electronic returnless fuel system utilized has the following advantages:

- reduced fuel tank vapor.
- requires less electrical power.
- does not require a fuel return line.

The intelligence of this system is contained within the engine control module (ECM).

### Fuel Tank

The steel fuel tank is located inside the luggage compartment and mounted across the vehicle behind the passenger compartment bulkhead. On vehicles without a convertible top the fuel tank is held in position by locating pins at the front and retaining straps fitted to body-mounted brackets; on vehicles with a convertible top it is held in position by the closing panel and locating pins at the front of the fuel tank.

### Fuel Filter

The fuel filter is of a conventional construction being that of a paper element sealed within a steel canister. The fuel filter is located under the left-hand rear seat pan.

### Fuel Tank Filler Pipe

The fuel tank filler pipe is integral to the fuel tank and is non-adjustable with a breather.

### **Inertia Fuel Shutoff (IFS) Switch**

The inertia fuel shutoff (IFS) switch is designed to cut power to the fuel pump in the event of an accident. It is located behind the left-hand cowl side trim panel.

### **Fuel pump driver module**

This fuel pump driver module is utilised to regulate the performance of the fuel pump and therefore improve the efficiency of fuel delivery.

### **Fuel Pump**

The fuel pump is located inside the fuel tank. It features an integral fuel level sensor. The fuel pump on vehicles without supercharger is an electric turbine type pump. The fuel pump on vehicles fitted with supercharger is a mechanical gear type pump.