

## TRANSMISSION DISASSEMBLY (CONT'D)

- 42. Remove inside detent lever and parking rod as an assembly from case (See Figure 58).
- 43. Push the parking pawl down against the spring pressure and remove the parking rod guide sleeve (See Figure 58).
- 44. Use a pick through the hole in case, as shown in Figure 58, to push the parking pawl pivot pin out of case.

Continued on Page 48

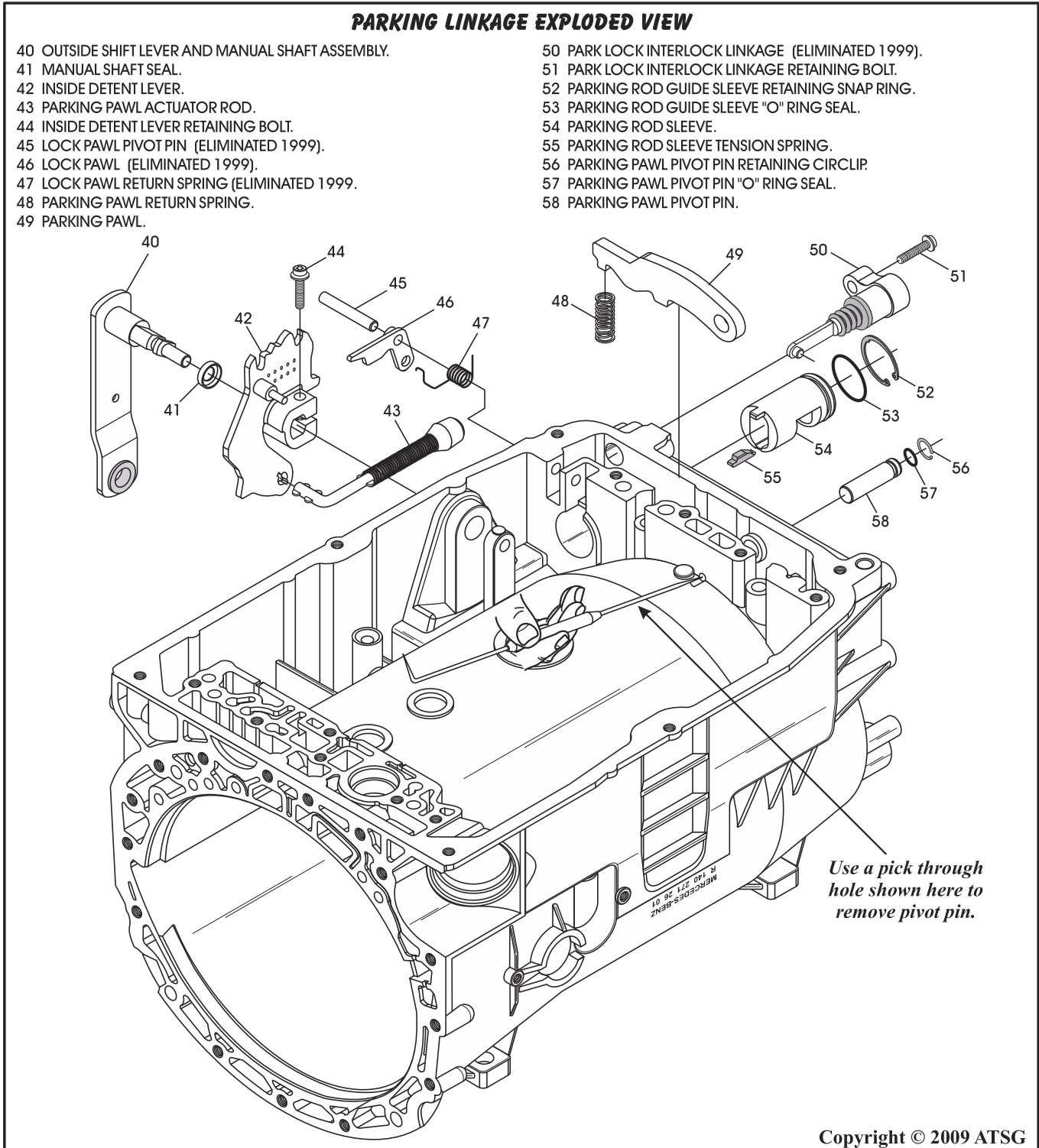


Figure 58