

# 1998 XK RANGE - Front Suspension - 204-01

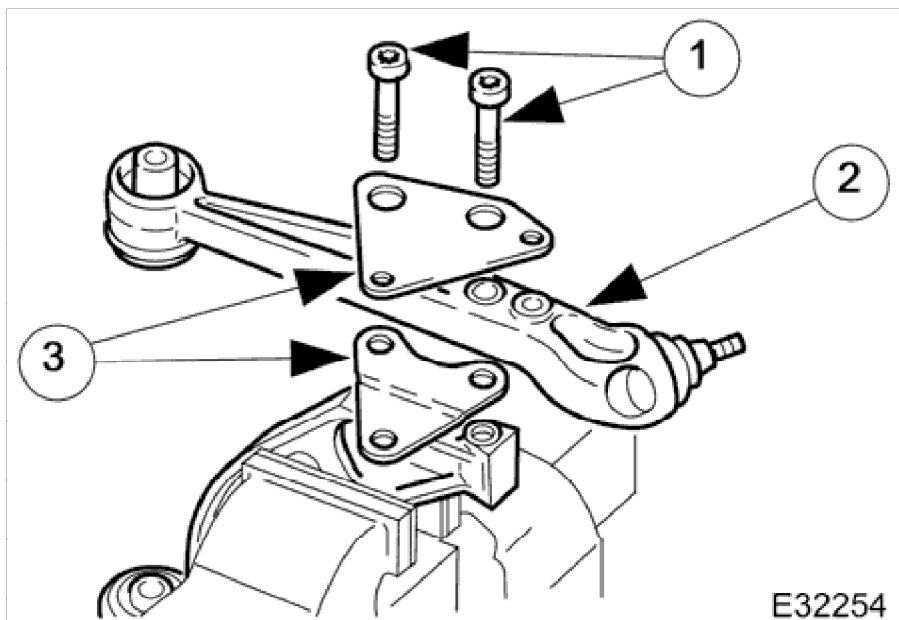
## Rear Lower Arm 60.35.54



Removal **CAUTION:**

Replacement of nuts and bolts: Various thread-locking devices are used on nuts and bolts throughout the vehicle. These devices restrict the number of times a nut or bolt can be used. See section <<100-00>> for information.

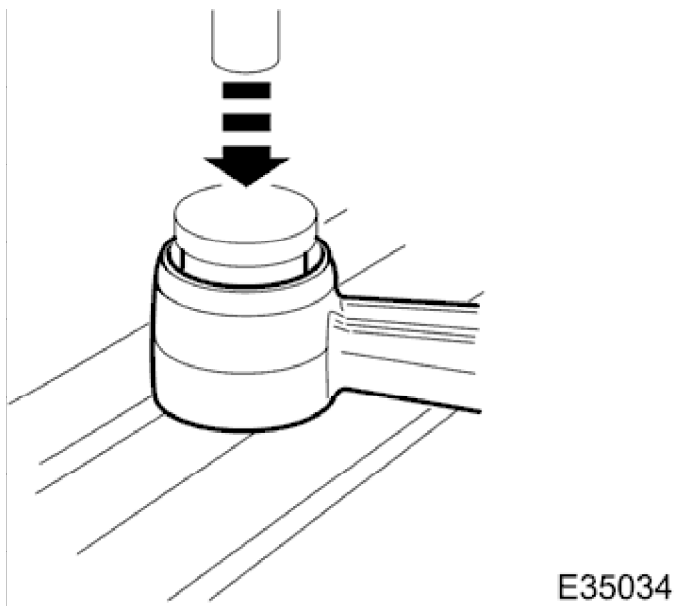
1. Raise front of vehicle and support on stands. Refer to Section <<100-02>>.
2. Remove appropriate road wheel. Refer to Section <<204-04>>.
3. Remove lower wishbone. Refer to 60.35.02.90



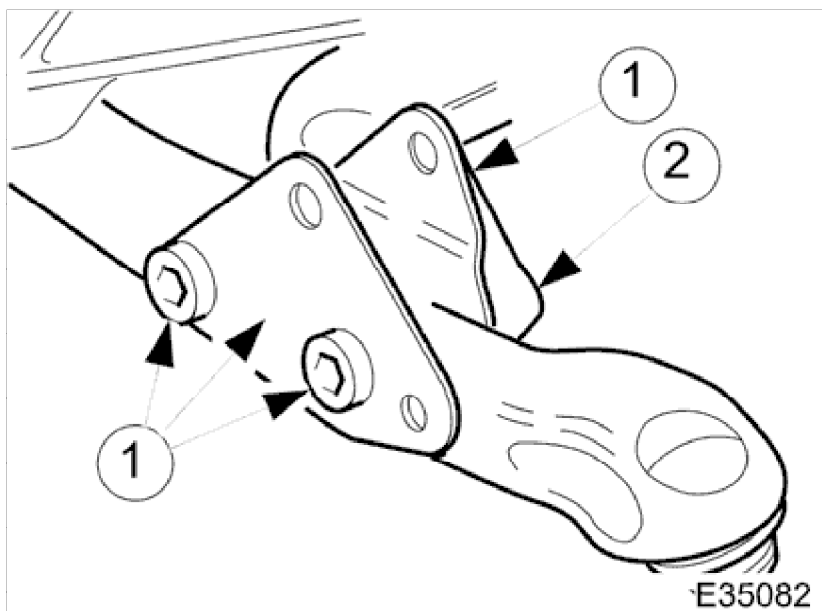
4. Separate wishbone arms.
  1. Clamp wishbone front arm in vise and remove bolts securing front arm to rear arm.
  2. Remove and discard wishbone rear arm/lower ball joint assembly.
  3. Remove and retain shock absorber lower mounting brackets.
5. Remove wishbone front arm from vise.
6. Thoroughly clean wishbone front arm and shock absorber lower mounting brackets.

## Installation

## 1998 XK RANGE - Front Suspension - 204-01

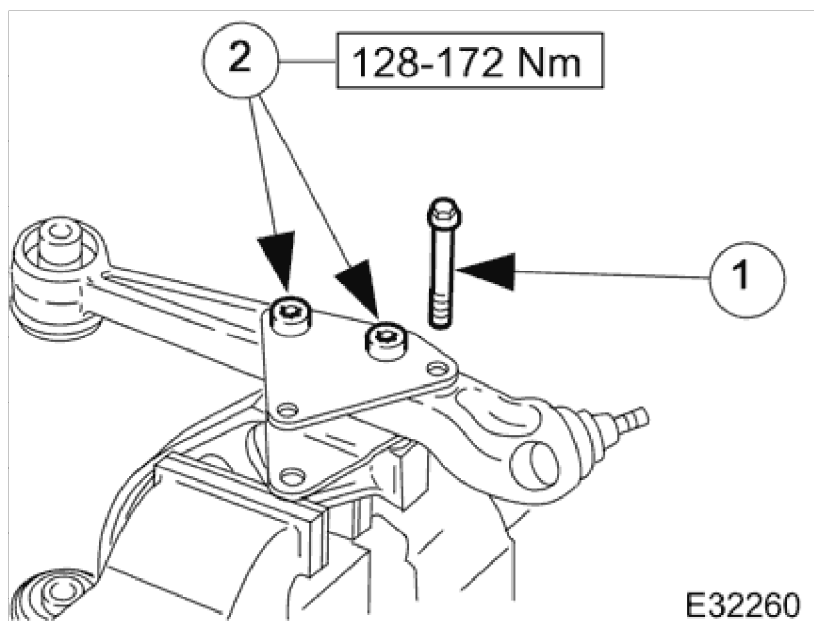


1. Fit bush to rear arm assembly.
  - Position wishbone rear arm front uppermost on press bed.
  - Position bush on rear arm.
  - Place a steel plate on top of bush.
  - Ensuring there is sufficient underside clearance for bush protrusion, operate press to fully seat bush.
2. Remove steel plate from bush.
3. Remove wishbone rear arm assembly from press.

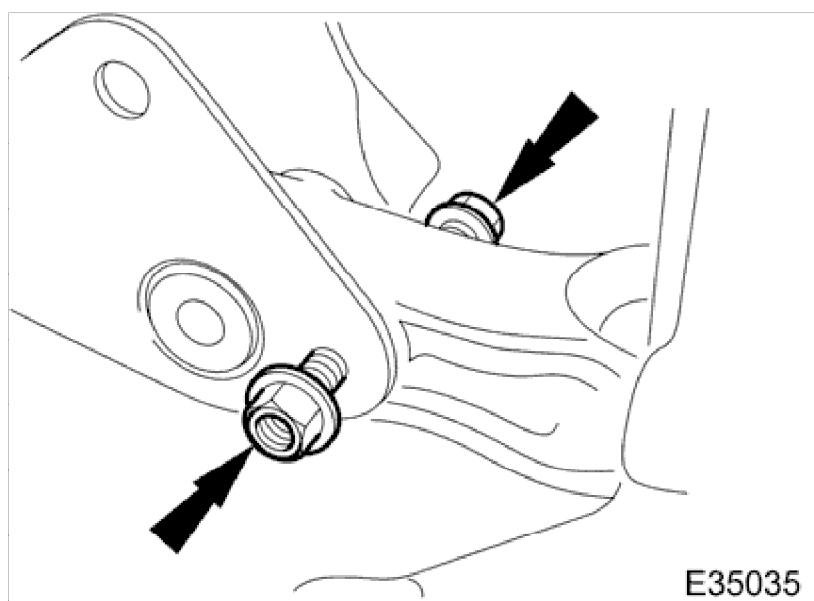


4. Install wishbone rear arm and shock absorber mounting brackets to wishbone front arm.
  1. Position shock absorber mounting brackets and wishbone securing bolts on rear arm.
  2. Position wishbone front arm on bolts.
  - Install but do not tighten bolts.

## 1998 XK RANGE - Front Suspension - 204-01



5. Secure wishbone rear arm to front arm.
1. Install but do not tighten stabilizer bar link bolt and nut.
  2. Tighten wishbone rear arm to front arm bolts to 128-172Nm.



6. Remove stabilizer bar link bolt.

7. Release wishbone assembly from vise and remove plastic transit cover from ball joint.
8. Install lower wishbone assembly. Refer to 60.35.02.90
9. Install road wheel. Refer Section <<204-04>>.
10. Raise front of vehicle, remove stands and lower vehicle. Refer to Section <<100-02>>.